

# PROVIDENCE

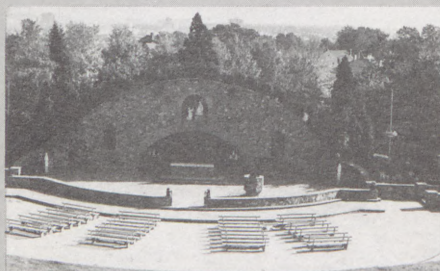
Current News of Interest to Providence College Alumni and Friends  
March 1984

## UPDATE





5 Innovative power plant goes on-line.



6 Concert Under the Stars highlights Reunion Weekend.



8 Hoopsters enjoy winningest season since 1977-78.



10 Hall of Fame salutes 13 Friar Athletes.

#### PROVIDENCE UPDATE

Is a publication of the  
 Office of Public Information  
 Ann M. Manchester, *Director*  
 Stephen E. Sylvia, *Assistant Director*  
 and the Alumni Office,  
 Joseph Brum, *Director*  
 Diane E. Childs, *Assistant Director*

## From the Editor's Desk . . .

When Father Peterson asked me to stop into his office on the morning of January 30th, I assumed that we would discuss impending college business relating to the Public Information Office. Instead, he shared with me his plans to announce to the Corporation (the following day) his intentions to resign from office at the end of June, 1985. As we discussed how he had arrived at this decision, I noticed that his physical demeanor became more relaxed and tranquil, assuring me that he was experiencing a genuine sense of peace and contentment with himself ... and his decision.

Father Peterson has spearheaded a number of monumental academic, social and physical changes at PC during his more than 12 years as president. He has embraced the peaks and valleys of his responsibilities with both grace and distinction, garnering strength during troubled times from his unrelenting belief in the Christian values PC has espoused since 1919. The College could ask for no finer president ... no better leader ... no stronger man of wisdom and foresight, who consistently has been willing to grapple with the risks that inevitably emanate from change.

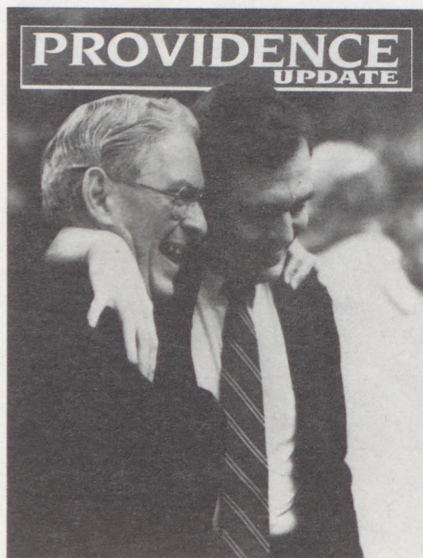
And though we lament the approaching end of this era, we cannot but feel joy ... that this Dominican leader who has accomplished so much will soon realize a well-deserved rest from the pressures of being College president.

We wish you, Father Peterson, continued success as you serve out your tenure, and we thank you for guiding the College with such dedication and flair.

Ann M. Manchester '75  
 Director of Public Information

As you can see, in this issue of **Providence Update** we have inaugurated some design format changes in the hope that this publication will be a more readable, coherent representation of what is happening at the College. We welcome your comments and suggestions for future issues, and we encourage all alumni to keep us informed of your whereabouts and what you are doing.

A special note of thanks to our printer, Charlie Guillette, who graciously shared his creative talents, technical expertise, and a ton of patience, to give **Update** a new look.



Our cover photograph, taken by Tom Maguire '72, captures a triumphant moment of pride in PC's history as Father Peterson congratulates the newly-elected Mayor of Boston, Ray Flynn '63. Flynn, a former All-American and N.I.T. MVP, was honored by the Alumni Association during the PC vs. Boston College basketball game at the Providence Civic Center on January 11.

A crowd of nearly 10,000 cheered the Friars on to an explosive 63-62 upset over the Eagles.

## In His Own Words . . .

"For some time I have been giving much prayerful thought to the question of how much longer I should remain as president. I have discussed this matter at length with Fr. Daley, the Dominican Provincial and Chairman of the Providence College Corporation and with Bishop Gelineau. Both have been very understanding and very supportive.

"I have decided that I would like to be replaced as president of Providence College at the end of June, 1985. By that time, I will have completed fourteen years as president. The year and a half which intervenes will allow me to complete a number of very important projects in which I am now engaged. Among these are the construction of the new Dominican Priory and the first phase of a major capital campaign which the College intends to initiate in the very near future.

"During the remainder of my time as president, I intend, of course, to carry out actively all the duties of my office.

"The first and most important phase of our capital campaign will be completed within a year and a half. It is for this reason that I am announcing now my future plans. Sufficient time and notice will thus be given not only to assure a strong initial phase of the campaign, but also a smooth transition of authority.

"My years as president have passed very rapidly. By June of 1985, most of the goals I set out to achieve will have been accomplished. I believe, therefore, that would be an appropriate time for Providence College to choose new leadership.

"I am very grateful to all of the members of the Providence College family for their continued cooperation and concern."

## . . . and the community responds

About a decade in office is the most that can be expected of modern-day college presidents — so pressure-packed has the job become. The late Barnaby C. Keeney said that when he retired in 1966 after 11 years as head of Brown University. Frank Newman echoed it when he left the University of Rhode Island last June after nine years at its helm. Their experience makes understandable the decision of the Very Rev. Thomas R. Peterson, O.P., to resign from the presidency of Providence College next year.

Father Peterson already has been in charge at P.C. for 13 years. During that time, he shepherded the college through some of the most momentous events in its history: it became coeducational; the size of the student body, and of the campus, and of the annual budget expanded dramatically; and now a major capital fund-raising drive is about to start. Besides supervising all of this, Father Peterson has taken the lead in many civic activities. No one more deserves a respite.

Nevertheless, the entire community cannot but feel "deeply saddened," as Governor Garrahy said, that Father Peterson will be leaving the position he has occupied so gracefully and so successfully for so long. In his own mind, he feels he has accomplished "most of the goals I set out to achieve." He is too modest. His contributions to P.C., and to Rhode Island, have far exceeded what could be expected of anyone. The college will find him hard to replace.

*Editorial reprinted with permission: Providence-Journal Bulletin, February; 2, 1984*



# PROVIDENCE NEWS

## PC, Georgetown Begin Dental Co-op Program

Providence College has signed an agreement with Georgetown University's School of Dentistry in Washington, D.C. which enters the two institutions into a 3-4 year combined bachelor of science/doctor of dental science degree program.

Designed for academically outstanding high school students who have a strong motivation towards the dental profession, the program allows for the completion of both the B.S. in biology and the doctor of dental science degree in seven years. The purpose of the program is to enable talented students to focus on the professional goal of dentistry as undergraduates, while reducing the academic and financial stresses commonly associated with pre-professional education.

The new co-op program is the first in the state to virtually guarantee a student admission to a major university for graduate work toward the D.D.S. degree.

According to Dr. Carol Crafts, chairman of the biology department, PC wanted the program because college graduates in RI are now forced to leave the state if they want to become dentists. When seeking admission to a state university outside of RI, these students have been at a disadvantage in competing for space with residents of that state.

The first three years at Providence College offer a blend of liberal arts and basic and biological sciences, and the latter four years at Georgetown allow completion of both the B.S. and D.D.S. degrees.

Applicants of the 3-4 year program must be superior in math and sciences and have a minimum combined SAT score of 1200. Qualified students will be interviewed jointly by representatives of both PC and Georgetown. PC is currently accepting applications for the fall of 1984.

Initially, up to five students per year may be accepted into the program. Students admitted are expected to maintain a 3.0 overall minimum grade point average during their three years at PC; final admission to the School of Dentistry is contingent upon successful completion of these three years of study, satisfactory DAT scores and the Advisory Committee letter of recommendation.

## Phi Sigma Iota Admits PC Modern Languages Dept.

Providence College's Modern Languages Department has been accepted into the National Foreign Languages Honor Society, PHI SIGMA IOTA, which recognizes outstanding ability and attainments in the study and teaching of foreign languages.

The ideals of PHI SIGMA IOTA are to stimulate advanced study and individual research and to promote cultural enrichment from knowledge and use of a foreign language.

Membership in the society is the highest honor that students and faculty can receive in the field of foreign languages, including the classics, linguistics, comparative literature, bilingual education, and programs with interdisciplinary majors and minors which include foreign languages as an essential component.

The PC chapter will be known as Delta Beta number 131, and Dr. Raymond Lavalley, assistant professor of French, will serve as faculty advisor.

## Faculty/Staff Notes

**James M. Carlson**, associate professor of political science, will chair a panel on "Television and American Politics" at the annual meeting of the Midwest Political Science Association in Chicago. His review of Paul A. Smith's *Electing a President: Information and Control* appeared in the December issue of "American Political Science Review." That issue also included a review by **Susan Marsh**, associate professor of political science, of *The Eastasia Edge*, by Roy Hofheinz, Jr. and Kent E. Calder.

**Patricia M. Lawlor**, assistant professor of French, will present her paper entitled "Baudelaire's Artistic Speculations" at the Northeast Modern Language Association's annual convention in Philadelphia.

**Eric Essen**, instructor in business, has received his certification in production inventory management by the American Production and Inventory Control Society.

**Jane Lunin Perel**, associate professor of English, has had her poem entitled "Blowing Kisses to the Sharks" published by the Northeast Journal in *Ocean State Poems*, an anthology of poetry by Rhode Island writers.

**Lynne B. Ryan**, instructor in special education, coordinated a one-day workshop at PC on "Using Microcomputers in Special Education." Ryan was also principal presenter at the workshop, which was sponsored for area administrators by the RI Department of Education.

**Sister Mary Ann Follmar**, religious studies instructor, conducted a workshop on "Dominican History and Life" at the Dominican Monastery in Buffalo, NY, and presented her paper, "Ecclesial Jubilee: The Church of Sinners Rejoices", at the St. Catherine of Siena Colloquium in Washington, D.C. Sister Follmar is also a columnist for the *National Catholic Register*.

**Mary Bellhouse**, associate professor of political science, has received a National Endowment for the Humanities Fellowship for the 1984 academic year to complete her project, "Politics and the Arts in Eighteenth-Century France: Idealized Images of Peasants and the Rise of Agrarian Capitalism."

**Richard N. Elkington**, associate professor of photography, participated in a panel discussion on "Art Education Today and Tomorrow" held at Brown University for the 1984 Regional Scholastic Art Awards. Elkington addressed the importance of a liberal arts foundation in the fine arts.

**James Baker**, associate professor of art, exhibited his current series of drawings and paintings at the McKillop Gallery, at Salve Regina College, Newport.

**Clint Anderson**, professor of psychology, presented his paper, "Termination of Alcoholism Corresponds to Diminished Noradrenergic Activity in Alcoholic Korsakoff's Psychosis," at the annual meeting of the American College of Neuropsychopharmacology held in San Juan, Puerto Rico.

**Lida Aronne-Amestoy**, assistant professor of Spanish, has presented the following papers: "Poetics and Politics of the Fantastic in Spanish-American Narrative" at the 20th Century Literature Conference in Louisville, and "The Detective Novel and Social Realism: The Poetics of Deconstruction in G. Garcia Marquez" at the Northeastern Modern Language Association's meeting in Philadelphia.

James F. Flanagan, associate professor of sociology, presented "An Experiment in International Field Placements for Undergraduates" at the annual meeting of the Council on Social Work Education held in Detroit.

Catherine L. Keating, assistant professor of special education, delivered her paper entitled "Learning Disabilities Following Acquired Brain Injury: Their Causes and Hospital Based Educational Treatment" at the Association for Children with Learning Disabilities Conference in New Orleans.

### Faculty Additions

PC has appointed the following to special lecturer positions on the undergraduate faculty: D. Steven Blum, political science, Ph.D., Brandeis University; Jay V. Cohen, mathematics, Sc.M., Brown University; Joseph S. Cannava, business administration, M.S.F.S., American College; Caterina L. Gallo, modern language-Italian, M.A. Middlebury College; John A. Giordano, business administration, M.B.A., University of Rhode Island; Peter S. Goodrich, business administration, Ph.D., University of Manchester, England; Daniel L. Kaplan, religious studies, Ph.D., Boston College; David B. Lisker, business administration, M.B.A., University of Chicago; John C. Norcross, psychology, M.A., University of Rhode Island; Patrick J. Quinlan, law, J.D., Baylor University Law School; and David M. Werner, mathematics, M.S., University of New Hampshire.

Joining the professional staff is Paul L. Picerno, choral director, M.M., New England Conservatory.

### College Mourns Death of John E. Fuyat, Sr.

John E. Fuyat, Sr., assistant director of food services at the college since 1944, died suddenly on December 5th at Rhode Island Hospital. Remembered by many for his warm and charming personality, he helped oversee the distribution of food to the more than 1800 dormitory residents at PC.

Besides his wife, the former Anne Lavoie, he is survived by five children, two of whom are PC graduates; the Hon. John E. Fuyat Jr. '70 and Mrs. Carolyn Fuyat Barry '75. The late Eleanor Fay Fuyat was his first wife.



Father Peterson starts the operation of the new co-generation plant as project engineer J. Clifford Halliwell (left) president of Halliwell Engineering Associates, and Jim Cunningham, director of the PC Physical Plant, look on.

## PC Heating Plant Converts to Coal

Providence College unveiled its new coal-burning heating plant at a January 31st press conference that attracted officials from the U.S. Department of Energy, the Public Utilities Commission and the Governor's Energy Office.

The Very Reverend Thomas R. Peterson turned on the system's main valve, which distributed coal-produced steam through underground piping to heat the campus' 30 buildings. Renovations to the previously oil-burning plant began in September, 1982, and a structural addition was completed to house two fluidized bed combustion boilers. The technology of the fluidized bed boiler system permits the burning of low-cost coal in a hot bed of coal and limestone particles. The plant is also equipped with a turbine generator capable of producing approximately 25% of the college's electricity requirements.

PC is the first installation in the northeast to use this technologically advanced method of burning coal, which maintains stack emissions that are well within the limits established by federal regulations.

The conversion to coal is expected to save the college approximately \$20 million over the next 20 years.

### Annual Fund Update

General Chairman Augustine C. Ramos, D.D.S. '50, is pleased to announce that as of March 1st, the 1983-84 Annual Fund continues its strong pace towards this year's goal of \$950,000. With four months remaining before the June 30th close, the Annual Fund has received \$906,815. in pledges and \$672,572. in cash towards the goal. To-date, over 7,100 alumni have made pledges to this annual PC endeavor. Last year at this time, the Fund had received \$714,525. in pledges and \$529,599. in cash.

"These impressive totals can be credited to hard work, genuine interest and generosity, which is the winning formula that must be continued to exceed this year's goal," Ramos said.

It is hoped that whether you are contacted by mail or phone, you will participate in this year's Fund.

### Tribute to Fr. Halton

During his 40-year teaching career, the late Reverend Edward B. Halton O.P., professor of physics, devoted most of his spare time to his hobby as an amateur ham radio operator.

Since his enthusiasm for the hobby spilled over into the classroom, many of Father Halton's students likewise became avid "radio hams."

As a tribute to Father Halton, Paul B. Boivin, Jr., '55 has begun compiling a list of alumni who are licensed radio amateurs so that a newsletter, on-the-air get-togethers and possible reunions at the college can be arranged.

Qualified alumni should send their name, class year, address, call letters and class of license to:

Paul B. Boivin, Jr., '55 (WIZXA)  
242 Old River Road, RR 4  
Lincoln, RI 02865

# PROVIDENCE ALUMNI NOTES

## Alumni Directory to be Published

Providence College is pleased to announce the publication of a biographical alumni reference volume which will be available for distribution in late September, 1984. The directory will list all known, living alumni alphabetically, geographically, and by class year.

The directory, our fourth since 1974, will include your full name, occupation, business and home addresses, and business and home telephone numbers.

In late May, 1984 alumni will receive a biographical update questionnaire to be completed and returned to the alumni directory publisher. Individuals wishing to reserve their personal copy will be given the opportunity to purchase either a hardbound (\$29.95) or softbound (\$19.95) edition. It is imperative to our project that you complete and return these forms as soon as you receive them.

## Outdoor Pops Concert Set for June 2nd

On Saturday evening, June 2nd, the campus Grotto area will come alive with the sounds of the entire 52-piece R.I. Philharmonic Orchestra, as the Alumni Association inaugurates a major social/cultural event destined to be a new annual PC tradition.

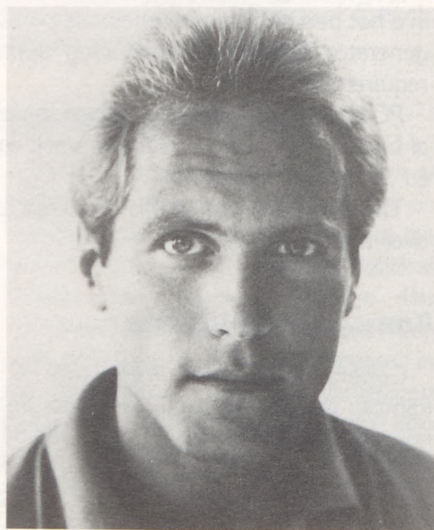
Tom Parker, a dynamic and talented rising soloist on the pops concert scene, will sing along with the orchestra's renditions of various popular show tunes. Parker's many credits include performances with the Los Angeles Philharmonic at Hollywood Bowl, the Baltimore Symphony for the premier of a Burt Bacharach/Hal David evening, the Detroit Symphony and the Opera Companies of Michigan and Santa Fe. All of his appearances have received rave reviews. The Michigan native is considered one of the few tenors who can cross over from pop to classical music with great ease and robust style, encompassing material from "South Pacific" to "LaBoheme."

The orchestra and soloist will use the Grotto structure as a stage, and the audience will be seated at round tables of ten fanning out across the lawn. The entire area will be illuminated by Japanese lanterns, and waiters will provide service.

The directory will be made available only to the alumni of Providence College. The directory will tell you what your former classmates and old friends are doing, where they work and live, and how to contact them by phone or mail. The geographical index will tell you which alumni are located in your own area, and will be a useful aid in contacting former classmates when traveling.

The new directory will have a LIMITED PRINTING — only those directories ordered in advance will be printed. Watch your mail for your personalized biographical update and reservation form, which will be sent to you by our publisher, Carleton Graphics, P.O. Box 4427, South Bend, Indiana 46634.

Your participation in this program is vital to the success of this project. Upon receipt of your questionnaire, please complete your personal biographical form, fill out the order card, and return them in the enclosed business envelope.



Soloist Tom Parker

Although the Pops Concert is a featured event of Reunion Weekend, it is open to the general public as well. Joe Cianciolo '60, general chairman for the special event, expects an attendance of over 2,000 people and has set ticket prices of \$15 or \$12 per person depending on table location.

A special flyer with a ticket order form will be mailed to all alumni at a later date. For now, mark your calendar and start assembling your party for a memorable evening on campus.

## June Reunion Weekend Planned

Based on the enthusiastic response from two previous reunion weekends, the Alumni Association is promoting a 1984 campus-oriented reunion weekend on June 1, 2, 3. This year's anniversary classes are those ending in a 4 or a 9; these classes are planning to hold their reunions during the weekend, except for the classes of '49 and '69, who are planning separate programs later in the year.

Each class will soon receive a detailed reunion itinerary and reservation form, but the basic events for the June Reunion Weekend are:

### • Friday - June 1

#### *Awards Dinner/Dance*

The various classes are seated together in their own sections of Raymond Hall for the evening, which includes a cocktail reception, a full course prime rib dinner, a brief speaking program and dancing.

### • Saturday - June 2

#### *Barbecue Party 11:30 AM to 3:30 PM*

Large tents will be pitched in front of Slavin Center for a full-scale chicken barbecue with all the trimmings. Live entertainment will be on hand and the recreation center and bookstore will be open.

*Outdoor 'Pops Concert' in the Grotto 8:30 P.M.* See the special article at left for details.

### • Sunday, June 3

#### *Mass followed by a Champagne Brunch*

The location of Mass will be set later, but the brunch will be held in Raymond Hall. A varied breakfast menu will be featured and an open bar will dispense champagne, bloody marys and mimosas.

Individual reunion notices will be sent to the members of reunion year classes and hotel information will be included.



## Area Club Plans Awards Dinners

The Greater Providence Chapter of the PC Alumni Association, "the **Mal Brown Club**," will hold its Annual Awards Dinner on Sunday, April 29 in '64 Hall, Slavin Center. This year's award recipients include:

**JOSEPH PRISCO '49** - Dr. William McDonnell Award, bestowed upon those who have given unselfishly of themselves to further the cause of PC. One of the most respected and best-liked coaches of collegiate golf, Joe is the only coach the Friars have known since the introduction of the sport into the PC athletic program in 1956. A management and finance instructor at the college since '53, Prisco has been active with the alumni association as a class agent.

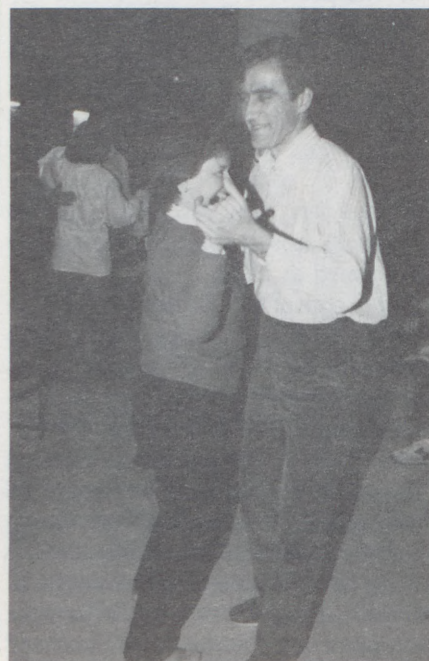
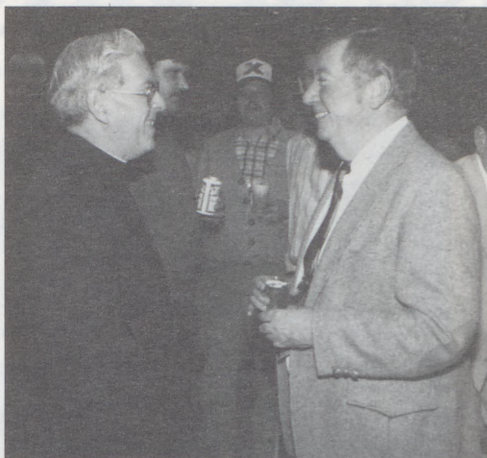
**REV. BERNARD KENNY, O.P.** will receive the Very Rev. Vincent C. Dore, O.P., award in recognition of unpretentious contributions and years of service to the college. Father Kenny has been active in numerous alumni activities and has volunteered his services to the Boy Scouts and other community youth organizations.

**MURIEL VASSETT '71** will receive the organization's highest accolade, the Mal Brown Award, given to alumni whose lives have exemplified loyalty to the college. The first woman to have served as president of the Mal Brown Chapter, Muriel is an instructor of religious education at St. Mary's Academy Bay View and the adult religious education coordinator for Holy Trinity parish.

**The New Haven Club** will hold its Veritas Awards Dinner on Tuesday, May 8th at the Laurel View Country Club in Hamden, Ct.

**The New York Alumni Club** will meet at the Rainbow Room, Rockefeller Center for its annual Awards Dinner on May 31st.

## Scenes from HOMECOMING '84 by Dave Witbeck



## PC JOBWIRE

The Counseling and Career Planning Center, in conjunction with the Alumni Office, has begun publishing a job newsletter called PC JOBWIRE. The first issue was March 1. It will be published 16 times a year. Most of the jobs listed are for those with 0 to 3 years work experience. Many will be positions in the Rhode Island or Southern Massachusetts area but there will also be a national job listings section as well.

Interested Alumni can subscribe by filling out the following form:

NAME \_\_\_\_\_ YEAR \_\_\_\_\_

ADDRESS \_\_\_\_\_

City, State, Zip \_\_\_\_\_ Phone (    ) \_\_\_\_\_

RATES: THREE ISSUES - \$1.00; 10 issues - \$3.00; 16 issues - \$5.00

Please make check out to JOBWIRE, COUNSELING CENTER, and mail to SLAVIN 210, Providence College, Providence, RI 02918

# PROVIDENCE SPORTS

## Seniors Provide Fans with a Winning Season!

A winning season! Not since former coach Dave Gavitt's squad posted a 24-8 record in 1977-78 have those words been used to describe the men's basketball team at PC. However, as the Friars enter the BIG EAST tournament against Seton Hall (at the time of this writing) with a regular season record of 14-13, they have achieved just that. Through hard work and persistence, Coach Joe Mullaney's hoopsters have accumulated more honors than any other squad in the last six years.

During the last week of 1983, they thrilled the Civic Center crowd with wins over UPenn (46-42) and Temple (65-59) to capture their first Fleet Basketball Classic Championship since 1976. Named as the Classic's MVP was PC senior Otis Thorpe.

As a follow-up to that feat, the team completed its longest winning streak in BIG EAST history, with wins last month over Pittsburgh, Seton Hall, St. John's and BC. Those games, along with another win over BC earlier in the season, gave the Friars their most BIG EAST victories in a single season since the conference was formed in 1979.

At the core of this success has been the team's captain, Otis Thorpe. A pre-season favorite for All-BIG EAST honors, he has led his teammates in scoring with an average of 17.3 points per game. The 6'9" center made history of his own during February by scoring a career high of 28 points against Syracuse and then moving into the number six spot on PC's all-time scoring list during the Georgetown game. Ironically, the player he passed to take sixth place was Georgetown's own head coach, John Thompson '64. This season, Thorpe has led the BIG EAST in rebounding - with an average of 10.8 per game - and has been second in scoring. The Boynton Beach, FL native also made some BIG EAST history this year by becoming the Conference's all-time leading scorer and rebounder.

Second on the team's scoring list has been sophomore guard Donnie Brown. The 6.2 Los Angeles, CA native has averaged 8.0 points per game overall and 9.3 in the BIG EAST. His performance in the latter part of the season was instrumental in the Friars BIG EAST winning streak, when he scored 11 points against BC, 16



A final tribute: (l. to r.) Seniors Otis Thorpe, Marty Bolton (team manager), Carl Hill, and Sean Canty bask in the glory of spectators' appreciation during the PC vs. Howard University match-up, the Friars last home game of the season.

points against St. John's and a career high of 20 points against Seton Hall.

Another player performing well this season for the Friars has been Brian Waller, a junior transfer from Allegheny Community College. The Landover, MD native finished third in scoring on the team with an overall average of 7.5 points per game and 7.2 in the BIG EAST. His most memorable basket this season came during Ray Flynn ('63) Night at the Civic Center, when he hit a jump shot at the buzzer for a 63-62 victory over BC. It not only gave the Friars their first BIG EAST win of the season, but it also gave the new mayor of Boston something to crow about back home.

The team's only seniors besides Otis Thorpe - Carl Hill and Sean Canty - have also helped in this year's success. Hill, a native of Trenton, NJ, averaged 4.7 points per game and 3.6 in the BIG EAST, while Canty, a native of Dover, MA, who came to PC via Tabor Academy (Marion, MA), has shot 55% from the field overall and has averaged 4.9 points per game overall and 5.9 in the BIG EAST.

Others contributing to the cause have been freshman guard Billy Donovan, sophomore guard Harold Starks and junior forwards Ray Knight and Keith Lomax. All of these players have started for the Friars at some point or another during this year's campaign.

Donovan, a 6'0" native of Rockville Center, NY, finished second on the squad in assists with 73, and averaged 2.4 points per game overall and 2.5 in the BIG EAST. Starks, the player ahead of Donovan on the assists list, is a product of the Brooks School in North Andover, MA (his hometown is New York City) and averaged 5.5 points per game overall and 4.3 in the BIG EAST.

Lomax, at 6'6", scored a career high of 17 points in the Friars' upset win over BC at Roberts Center last month. The Washington, DC native averaged 5.7 points per game overall and 7.0 in the BIG EAST. His former high school teammate, Ray Knight, transferred to PC from Georgetown two years ago. This year he averaged 6.1 points per game overall and 5.1 in the BIG EAST.



## PC, Lamoriello Join New League



Lou Lamoriello  
HOCKEY EAST Commissioner

The formation of HOCKEY EAST, designed to be the region's premier college hockey league, was officially announced at a January 18th press conference in Boston. The new league, which consists of Providence College, Boston College, Boston University, University of Maine, University of New Hampshire, University of Lowell and Northeastern University, is headed up by former PC hockey coach and current athletic director Lou Lamoriello.

Plans for the new league are among the most ambitious and innovative in college sports. Set to begin play next season, member schools will not only face-off against each other, but will also play a first-of-its kind interlocking schedule with the powerful Western College Hockey Association (WCHA). Through this unique arrangement, HOCKEY EAST schools

will play 18 league games (three against each member) and 12 combination games (two against each WCHA team). These HOCKEY EAST-WCHA games will count in the standings of both leagues and will determine the seeding for each league's post-season tournament.

The Providence Civic Center, home of PC's basketball team and the site of numerous playoff tournaments over the years, will serve as HOCKEY EAST's permanent headquarters and the site of its first post season tournament to be held on March 15 and 16, 1985.

Scheduling within both leagues has been designed to accomodate the academic priorities of member schools and their players. Most HOCKEY EAST-WCHA games have been scheduled during either school holidays or on weekends, while all HOCKEY EAST league games, with the exception of Maine, require short travel distances. To cut travel expenses on East-West trips, teams from each league will travel in pairs and share the cost of charter airfare.

Other plans for the new league include HOCKEY EAST-WCHA doubleheaders, in arenas such as the Boston Garden, and the Providence Civic Center, and possible television packages that may include cable and syndication.

In commenting on the new league, Commissioner Lamoriello stated, "HOCKEY EAST and its affiliation with the WCHA is the greatest step forward ever taken in intercollegiate hockey. It will literally change the face of the sport. In essence, we have created a national collegiate league for the sport, the first ever in intercollegiate athletics."

### 1983-84 Regular Season Statistics

			ATTN	TOP SCORER	TOP REBOUNDER
82	Brown	54	5,774	Waller 16	Knight 7
94	Assumption	70	4,911	Thorpe 25	Thorpe 14
72	Arizona	69	6,012	Thorpe 21	Thorpe 7
64	Marquette (ot)	60	7,104	Waller 18	Knight 9
50	Holy Cross	47	7,491	Lewis 12	Thorpe 4
65	Long Island	72	4,424	Thorpe 18	Thorpe 7
69	Rhode Island	58	7,228	Thorpe 18	Knight 14
46	UPenn +	42	7,419	Thorpe 16	Thorpe 18
65	Temple +	59	8,019	Thorpe 17	Knight 7
58	at Seton Hall * (2ot)	60	2,232	Thorpe 20	Thorpe 18
52	at St. John's *	57	6,034	Thorpe 15	Thorpe 7
63	Boston College *	62	9,122	Thorpe 18	Thorpe 6
62	Syracuse *	70	9,916	Thorpe 24	Thorpe 13
76	at Georgetown *	80	4,328	Thorpe 15	Thorpe 7
67	Connecticut *	70	6,538	Thorpe 26	Thorpe 7
53	at Villanova *	66	7,109	Thorpe 14	Thorpe 6
47	at Dayton	73	11,097	Thorpe 14	Thorpe 9
78	Pittsburgh *	66	4,610	Thorpe 27	Thorpe 7
82	Seton Hall * (ot)	74	5,946	Thorpe 25	Thorpe 14
65	St. John's *	60	7,104	Brown 16	Thorpe 16
71	at Boston College *	68	4,000	Lomax 16	Thorpe 11
64	at Syracuse *	89	19,138	Thorpe 28	Thorpe 15
38	Georgetown *	59	12,150	Thorpe 9	Thorpe 7
59	at Connecticut *	62	4,660	Waller 17	Thorpe 10
56	Villanova	58	9,580	Brown 18	Thorpe 10
74	Howard	56	5,182	Thorpe 25	Thorpe 14
60	at Pittsburgh	61	5,771	Thorpe 21	Thorpe 11

+ FLEET BASKETBALL CLASSIC Hosted by Providence College and FLEET NATIONAL BANK

\*BIG EAST Conference Games

At the Providence Civic Center: 13-5

On the Road: 1-8

OVERALL 14-13  
BIG EAST 5-11

#### HOCKEY EAST

Providence College  
Boston College  
Boston University  
University of Maine  
University of Lowell  
University of New Hampshire  
Northeastern University

#### WCHA

University of Wisconsin  
University of Minnesota  
University of Minnesota-Duluth  
Colorado College  
University of North Dakota  
Michigan Tech\*  
University of Denver  
University of Northern Michigan\*

\*joined WCHA in January and not included on next season's interlocking schedule.

HOCKEY EAST Association  
Providence Civic Center  
One LaSalle Square  
Providence, Rhode Island 02903  
Telephone (401) 751-3463.

# Athletic Hall of Fame Inducts 13

Thirteen people who played prominent roles in establishing and maintaining the tradition of athletic excellence at Providence College have been inducted into the PC Athletic Hall of Fame. The Friar sports luminaries were honored at a February 25 dinner held on campus as part of the 1984 Alumni Homecoming Weekend festivities.

**Rev. Jordan Baeszler, O.P.** director of athletics from 1925 to 1934, was honored posthumously. His brother, Dr. John Baeszler '31 and his nephew, Paul Baeszler '75, accepted the award on behalf of the Dominican administrator whose achievements included a revival of PC basketball and the establishment of varsity programs in hockey, golf and tennis.

**Edward P. Conaty '33** received special recognition for his contributions to Friar sports as a volunteer sports information director and statistician in the 1930s. An organizer of booster efforts to promote PC hockey and basketball, Conaty is also a former president of the National Alumni Association.

**Arthur C. Weinstock '50**, a Boston attorney, was inducted to the Hall of Fame in recognition of his achievements as a four-year mainstay on the Friar basketball and baseball teams. He was co-captain of the basketball team, and as a senior, was named to the All New England basketball and baseball squads.

**William B. Moge '38** became a 'Hall of Famer' on the strength of a stellar varsity career in football, basketball and baseball. After leaving PC, he became a teacher-coach in Western Massachusetts. He is one of only two men to have been inducted into three separate Massachusetts Schoolboy Coaches Halls of Fame: for football, baseball and basketball.

**Robert 'Cy' Killian '50**, a power-hitting catcher in baseball and a forward in basketball, was also inducted posthumously. A former executive director of the RI Big Brothers, Killian played professional baseball with the New York Yankee organization after leaving PC. His wife, Sheila, accepted the trophy for her late husband.

**Joseph Duffy '30** of Somerset, MA, was cited for his outstanding career as a four-year starter at first base on the Friar baseball team. Duffy served as his team captain, batting a career .300 to lead the Friars to national rankings.

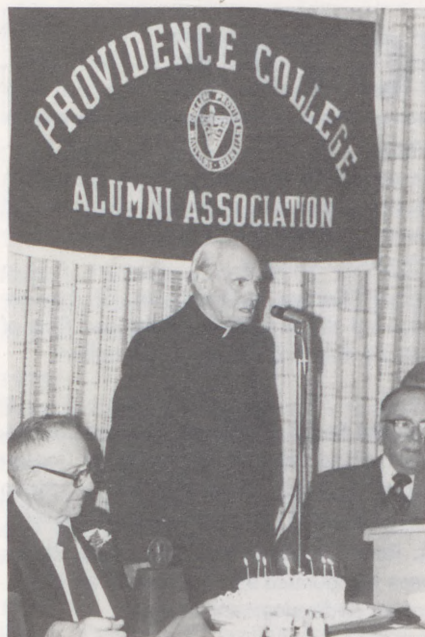
**James Schlimm '52**, the first 1,000 point career scorer in PC basketball annals, was honored as one of the first outstanding big men ever to play center for the Friars. Schlimm led the Friars to their first N.C.A.A. tournament appearance in Kansas City.

**J. Robert Bellemore '66** was a stand-out performer for the hockey and baseball teams. As a goaltender, he helped the Friars win their first E.C.A.C. championship and their first berth in the N.C.A.A. final four. He still holds the E.C.A.C. record for fewest goals allowed. Bellemore served as assistant hockey coach at PC for over 15 years and currently manages Schneider Arena.

**Michael Riordan '67**, one of the hardest-working forwards to ever don a Friar basketball uniform, was cited for his inspiring defensive play and potent scoring talents. He played a key role in Friar victories in the N.C.A.A., N.I.T. and Holiday Festival tournaments and went on to an illustrious ten-year career in the N.B.A.



The 1984 Hall of Fame inductees are, left to right: Dave Gavitt, Helen Bert, Richard Pumple, Bob Bellemore (obscured by Friar), Jim Schlimm, Art Weinstock, Ed Conaty, Bill Moge, and Bob, Sheila and John Killian, accepting the award for the late Robert "Cy" Killian.



**Rev. Robert G. Quinn, O.P.**, director of athletics from 1936 to 1944, was inducted as a special 80th birthday surprise which added a unique and memorable note to the program. Fr. Quinn's tenure as A.D. was marked by a resurgence in the football program.

**Richard Pumple '71** took his place among the Hall of Fame members as one of the best all-around performers in PC hockey history. During his career, he set records for most goals and most points despite suffering an injury in his junior year. As team captain, he led the squad to an E.C.A.C. berth and in just three seasons amassed a remarkable 109 points.

**Helen Bert**, the first director of women's athletics at PC, appropriately became the first woman to be inducted into the Hall of Fame. Helen came to Providence College in 1971 and since then, under her guidance, 11 varsity sports for women have been established.

**David R. Gavitt**, who served as head coach of basketball at PC from 1969 to 1980 and as athletic director from 1971 to 1983, was honored for his remarkable accomplishments as a coach/administrator. He led the Friars to eight consecutive 20-win seasons and five N.C.A.A. Eastern Regional Championships. Gavitt also is credited with expanding the college's varsity and intramural athletic programs for men and women and developing new campus athletic facilities while pioneering the BIG EAST Conference.

Over 400 people were on hand to pay tribute to the new Hall of Fame inductees, who join the 47 members added since the Hall was established in 1970.

## Scoreboard FRIARS

The ice hockey team, under rookie coaches Steve Stirling and Mike Gaffney, finished its regular season with an overall record of 20-10-2, including 12 wins, 6 losses and 2 ties in the ECAC. The team's overall record marked the fourth time in the last five years that the pucksters have reached the 20-victory plateau, while their regular season ECAC record pushed them into the playoffs for the eighth consecutive year. In the ECAC quarterfinals at Boston College, the Friars split the series with the Eagles, but lost the deciding 10-minute "mini-game", 1-0.

The indoor track team, under coach Bob Amato, finished seventh at the BIG EAST Indoor Track and Field Championships held during February. It was the team's best showing ever in the history of the event and included a win in the 3,000 meter run by Richard O'Flynn '85. His time in that event was 8:03.7.

### LADY FRIARS

John Marchetti's ice hockey team finished the regular season with a spectacular 19-1 overall record, advancing to the first-ever ECAC Women's Championship held at Schneider Arena. In the ECAC's, PC rolled over Princeton, 4-0, and then took the championship with a 1-0 overtime victory against arch-rival UNH. It was the Lady Friar's fourth win over New Hampshire this season. Named as tourney MVP was the Lady Friars' leading scorer, Jackie Gladu, who scored the overtime goal against UNH. (see Milestones).

After a slow start, rookie head coach Lynn Sheedy's basketball team ran off a 14-game winning streak en route to an impressive 19-6 regular season record. Led by two-time PC Female Athlete of the Year, Kathy Finn '84, the Lady Friars travelled to New York City for the BIG EAST Tournament but lost to defending champion St. John's, 68-52. At the time of this writing, the team is waiting for a possible NCAA bid.

In the women's side of the BIG EAST Indoor Track and Field Championships Mark Skinkle's team finished eighth, but had fine performances from Nicki Hronjak '86 (fourth in the 1,500 meters), Liz Noble '85 (sixth in the high jump) and Cheryl Smith '86 (seventh in the 800 meters).

## Milestones

Gates Orlando, a senior from LaSalle, Quebec and the co-captain of the men's ice hockey team, scored his 90th career goal during February, to pass Kurt Kleinendorst and become PC's all-time leading goal scorer. His overall season total of 23 goals and 30 assists also moved him into the number two spot for most career assists and most career points behind former Friar star Ron Wilson '77.

Jackie Gladu, a senior from Newton, MA and the co-captain of the Lady Friar ice hockey team, finished the season as the team's leading scorer with 37 goals and 22 assists and moved into the top spot for most career goals at PC (110). In addition, she holds the record for most points in a single season (69), which she scored during the 1981-82 campaign. One of the best female athletes ever to attend the college, Jackie also plays field hockey and softball and was named PC Female Athlete of the Year in 1981.

Laurie St. Jean, a senior from Putnam, CT and a co-captain of the women's basketball team, scored her 1000th career point during the final game of the regular season against Seton Hall. She finished her career in sixth place on PC's all-time scoring list.

## Pro Report

In a February 27th trade, Scot Kleinendorst '82, was sent by the New York Rangers to the Hartford Whalers in exchange for the Whaler's all-time leading goal scorer Blaine Stoughton. For the past season Kleinendorst has split his time between the Rangers and their farm club in Tulsa, OK; however, the Whalers plan to use him in the NHL as soon as he recovers from a recent minor injury.

Kurt Kleinendorst '83, Scot's younger brother, and Rich Costello, both members of last year's hockey squad, left the U.S. Olympic team in January to pursue pro careers. Costello joined another former Friar, Jim Korn '79, to play for the Toronto Maple Leafs of the NHL, while Kleinendorst joined the NY Ranger organization and was sent to Tulsa. Unfortunately, soon after his arrival, the Tulsa franchise folded and the team was transferred to Denver where he is now playing.

Paul Guay, another member of last year's hockey team, remained on the U.S. Olympic team and competed in Sarajevo, scoring a goal in Team USA's tie with Norway. He recently signed a multi-year NHL contract with the Philadelphia Flyers, who obtained his rights in a trade with Minnesota in February.

Randy Velischek '83, is currently playing for the NHL's Minnesota North Stars, but has seen periodic action this season with the team's farm club in Salt Lake City.

# PROVIDENCE CLASS NOTES

## 1926

**Joseph McGrath** has joined the Apostolic Volunteer Program as a staff person at the Hunger Action Coalition in Minneapolis, MN.

## 1930

**Rev. Joseph F. Merluzzo** of St. Anthony's parish in North Providence recently celebrated his fiftieth anniversary to the priesthood.

## 1938

**John H. Fanning**, former chairman of the National Labor Relations Board, has joined the Providence law firm of Hinckley & Allen. In recognition of his 25 years of service with the NLRB, which included appointments by 5 different presidents, the Columbus School of Law at Catholic University has formed the John Fanning Fund for labor studies to support teaching and research in labor law and labor-management relations. The fund will serve as a permanent tribute to Fanning's record of service.

## 1939

**James P. McNamee** of Pawtucket, RI, has been named a Fellow of the Technical Association of the Pulp and Paper Association, the world's largest professional association of engineers, scientists and managers.

**Edwin M. Rogers** of Orlando, FL, is a therapist with "Thee Door." The center provides comprehensive drug abuse treatment, education and prevention programs. He specializes in family counseling at the center.

## 1952

**Paul A. Bernier** of Fall River, MA, is now the managing editor of the *Fall River Herald News*.

**Donald T. Corrigan** of Somerset, MA, has been promoted to chairman of the board of trustees and chief executive officer of Slades Ferry Trust Co. of Somerset.

## 1954

**Dr. Joseph E. Earley** of Falls Church, VA, has been elected chairman of the chemistry department at Georgetown University in Washington, D.C.

## 1956

**James M. Donovan, Jr.** of Charlotte, NC, is now director of sales for the carton, film-label division of Rexham Corp.

**Frank N. Mastrola, Jr., DDS**, of Swansea, MA, is now associate director of the Dept. of Dentistry at Rhode Island Hospital. He is also a clinical instructor and lecturer at the Harvard School of Dental Medicine and an assistant clinical professor of dental care management at Boston University.

## 1957

**Capt. Robert F. DiPalma** of Annandale, VA, is now a Naval Analyst with the Office of the Secretary of Defense at the Pentagon.

## 1958

**Benjamin J. Cook, III**, is now serving as the associate editor of a new research journal, "Archives of Insect Biochemistry and Physiology." Cook is currently with the U.S. Dept. of Agriculture's/Veterinary Toxicology and Entomology Research Laboratory at College Station, Texas.

**Thomas C. McDermott**, of Rochester, NY, has been selected to the Bausch & Lomb Company's board of directors. He is currently senior vice president of Bausch & Lomb and president of its instruments group.

**George Riley** of Worcester, MA, has joined the Sprague Electric Company's Integrated Circuit Operations as marketing manager.

## 1959

**Joseph F. Murray, Sr.** of Warwick, RI, has been named director of the Rhode Island Department of Social and Rehabilitative Services.

## 1960

**Joseph H. Conley** of Kingston, RI, has become a partner in the firm of Lewis, Andrew & Conley, Certified Public Accountants.

## 1961

**Thomas Byrnes** of Dublin, Ireland, has been appointed as the first chief executive officer of the newly-established Irish National Telecommunications Company — Bord Telecom Eireann. The new company, employing 18,500 workers with assets of over \$1.65 billion, will be the biggest employer in Ireland.

**Richard Pantano** of Norwell, MA, has been promoted to executive vice president/co-creative director of the Hill, Holliday, Connors, Cosmopolos Advertising Agency of Boston.

## 1962

**J. Peter Ferrigan** of Manhattan, NY, has been appointed national advertising director of Beverage Media, Ltd.

**Robert A. Keane** of Des Moines, IA, has transferred from the FBI headquarters in Washington, DC, to the new position of senior resident FBI agent in Des Moines.

## 1963

**Dr. Joseph G. Samartano, Jr.** of Cranston, RI, has been appointed to the Rhode Island Board of Examiners in Dentistry.

## 1964

**Rev. Raymond M. Goodwin, Jr.**, has been appointed pastor of St. Patrick's parish in Rutland, MA.

**Robert J. O'Rourke** of Great Falls, VA, was appointed President of the Delphi Institute, a division of Longman's, the oldest English language publisher in the world.

## 1965

**Kernan King** of Belmont, MA, has been elected senior vice president, secretary and general counsel of New England Mutual Life Insurance Company.

**Brian O'Connor** of Greenwich, CT, has announced the formation of the law firm of Deseris Martin O'Connor & Castiglioni.

## 1966

**Richard Audet** of Swansea, MA, was the recipient of the National Association of Conservation District Environmental Education Award at both the county and state level.

**A. Robert Mailloux** of Woonsocket, RI, has been reappointed as a member of the Woonsocket Redevelopment Agency.

**Rev. Richard L. Meglio** of Providence, RI, has been appointed assistant pastor of St. Mark parish in Cranston.

**Joseph C. Piscatella** of Tacoma, WA, has recently written a book entitled *Don't Eat Your Heart Out* which has become a best-seller. It deals with his recovery from open heart surgery and the prevention of heart disease through a controlled diet.

## 1968

**John G. Hussey** of North Kingstown, RI, has been appointed director of fleet and heavy duty sales for the Fram Corporation of Rhode Island.

## 1969

**Richard C. Angelone** of Warwick, RI, has been named director of corporate taxes at Fleet Financial Group.

**Daniel J. Harrington** of Westford, MA, has joined BKW, Inc. of Nashua, NH, as vice president of sales.

## 1970

**Donald B. McLeod** of Cranston, RI, has been promoted to vice president of Durfee Attleboro Bank, MA.

## 1971

**David Somers** of Cranston, RI, has been appointed special programs controller for L.G. Balfour Co. in Attleboro, MA.

## 1972

**Michael J. O'Rourke** of Laurel, MD, was promoted to the rank of major in the U.S. Army. He is presently serving as Assistant Secretary of the General Staff Headquarters, United States Army Forces Command at Ft. McPherson in Atlanta.

**Robert L. Martin** of Smithfield, RI, has become a principal with Boucher & Cote, Ltd.

**Henry Toutain** of Chicago, IL, has been named the assistant dean of student life at Bucknell University.

## 1974

**Earl J. Croft, III** of Cranston, RI, has been appointed assistant to the director of public works in Cranston.

**Dr. Joan Miele** of Greenville, RI, has been chosen by the Rhode Island Federation of Business and Professional Women as their 1983 "Woman of Achievement."

**Ralph L. Palumbo** of Milford, CT, has joined The Corporate Funding Group of Woodbridge as vice president of finance.

## 1975

**Susan Del Carpio** of Houston, TX, has been elected a vice president of Texas Commerce Bank in Houston.

**Richard J. O'Connor** of Columbia, MD, is now a tax specialist at Arthur Young & Company in Baltimore, MD.

## 1976

**Paul V. Courtney** of Marietta, GA, is now a national account executive with CBS television.

**Mark E. Foley** of Worcester, MA, has been named assistant vice president for the new Worcester Business Banking Center. He will be responsible for both retail and commercial loans for the bank.

**Mary D. Tafuri** of North Providence, RI, has been appointed director of planning at Westerly Hospital.

## 1977

**Edward J. Esposito** of Providence, RI, has been named resident branch manager of Kelly Services, Inc.

**Robert P. Farrell** of Grosse Point, MI, is now executive vice president and general manager of the National Automobile Transporters Association.

**Kevin Foley** of Scotia, NY, has been named director of relocation services for Milne Company Real Estate in New York.

**Lynn A. Nocera** of North Providence, RI, has been elected an officer in the precious metals division of RI Hospital Trust National Bank.

## 1978

**Philip J. Rapuano** of Hamden, CT, has been promoted to assistant treasurer of Amity Bank in Woodbridge, CT.

**Brian Murphy** of Warwick, RI, has been named one of the Outstanding Young Rhode Islanders by the Rhode Island Jaycees. He is presently a financial counselor with Mutual of New York and is vice president of the RI Jaycees.

**Peter J. Searles** of North Providence, RI, has joined the Providence office of Arthur Young & Co. as tax manager.

## 1979

**Christopher M. Barra** of Quincy, MA, has been appointed to the staff of Financial Planning Advocates in Braintree, MA. He specializes in tax planning services.

**Kenneth B. Cook** of Rumford, RI, has joined the home office of Anexco Insurance Agency, Inc. in Boston.

**Timothy P. Dillon** of Woodbridge, CT, has joined the law firm of Joseph P. Flynn and James E. Sheehy of Ansonia.

**MaryJane Casey Donohue** of Little Ferry, NJ, has been promoted to assistant vice president at Chase Mortgage Corporation, a subsidiary of Chase Manhattan Bank.

**Frank Fanella** of West Warwick, RI, has been appointed president and chief operating officer of Edgehill, Newport, an alcohol treatment facility.

**Lt. Col. Charles A. Gaffney** of Warwick, RI, has assumed command of the U.S. Army Reserves, 2nd Battalion, 76th Regiment, 4th Brigade, 76th Division in Providence.

**Rev. Robert L. Marciano** of Warwick, RI, has been ordained to the priesthood for the Diocese of Providence.

**Ronald A. Morin** of Pawtucket, RI, was recently admitted to the Rhode Island Bar Association. He received his juris doctorate degree from Vermont Law School in May.

## 1980

**Steven W. Lichtenfels** of Washington, DC, has accepted a position with the National Broadcasting Company as an account executive in their radio division in Washington, DC.

**Deborah Samolyk MacMillan** of North Providence, RI, was recently promoted to loan officer for Fleet National Bank Private Banking Group.

**Shawn J. Mahoney** of Commack, NY, was recently appointed to the position of assistant vice president in the Controllers Dept. of Shearson/American Express Inc.

**Rev. Marcel Pincince** of Woonsocket, has been assigned to the Blessed Sacrament Parish in Providence.

**Mark D. Thompson** of Providence, RI, is the new district scout executive of the Thundermist District, Narragansett Council, for the Boy Scouts of America.

## 1981

**Christina M. Kennedy** of Alexandria, VA, is now working in Washington, DC, as state press coordinator for *Reagan-Bush '84*, the President's authorized campaign committee.

**Thomas J. Maloney** of Cranston, RI, has been promoted to systems programmer at the Blue Cross and Blue Shield of Rhode Island.

**Barbara S. Cottam** of North Providence, RI, has been named press secretary for RI Governor J. Joseph Garrahy.

## 1982

**Curtis L. Hickcox** of Annapolis, MD, is now a technical sales representative for Keeter & Long, Inc., which manufactures products for the utility industry.

## 1983

**Elizabeth B. Delgizzo** of Cranston, RI, has been named manager of Fleet National Bank's cash management department.

**John L. Manning** of Braintree, MA, has been appointed as a financial analyst at the Quincy Shipbuilding Division of General Dynamics Corp.

**Linda McArthur** of Providence, RI, has been named corporate secretary of People's Savings Bank and People's Trust Company.

**Lt. Kevin M. McGrath** of Providence, RI, has completed an armor officer basic course at the U.S. Army Armor School, Fort Knox, KY.

**Al McGuire** of Boxboro, MA, has been promoted to the position of sales representative of Lou Allen's Sons in the Central Massachusetts area.

**John Tretton** of Seekonk, MA, has recently been promoted to territorial sales manager for Duracell, USA.

**Mary Beth Wharton** of Reading, MA, has been appointed to the faculty of Our Lady of Nazareth Academy, Wakefield, where she will teach history, English and psychology.

**Lt. Carol A. Roetzler** of Lincoln, RI, has completed the Army's ordinance officer basic course at Aberdeen Proving Grounds, MD.

## IN MEMORIAM

Dr. James F. Keleher '24  
William E. McCabe, Esq. '27  
Frederick J. Trainor '27  
Dominic D. Gencarelli '28  
Rev. Vincent M. Raetz, O.P. '29  
Joseph Tausta '29  
Rev. Camillus A. Musselman, O.P. '30  
Francis A. Smith '35  
Dr. William F. Flanagan '36  
John J. McClurg '36  
L. Adrian Clancy, D.D.S. '37  
Leo H. Cater, Esq. '39  
Rev. Bernard G. King, O.P. '39  
Walter J. Kane '42D

T. Francis Maguire '42D  
Leo F. McWeeney '48  
James A. Kenney '49  
Frank J. Leary, Jr. '49  
Calvin A. Spinney, Sr. '49  
Richard A. Audette '51  
Robert A. Gedrys '52  
Roland E. Simeone '52  
Austin T. Dwyer '54  
Nicholas J. Rapoza '55  
James H. Keegan '65  
Thomas P. Ruotolo '75  
John P. Savoie '77  
Bro. John J. Kusmierz, O.P. '81



**Magic and Merriment in Blackfriars Theatre: The PC Theatre Arts Program presented Roger O. Hirson's musical comedy, *Pippin*, on two consecutive weekends in February. John Garrity directed this lavishly-staged production about the naive young man who comes to terms with the real world. All performances were sold out.**

## Marriages

Edward Sweeney '64  
to Tracie Johnson

Joseph Francis Antonelli '70  
to Patricia Ellen Collins

Robert S. Sweeney '70  
to Jeanne A. Durkin '78

Dr. Russell M. Demers '72  
to Cynthia Ann Gegas

Paul T. Carcieri '73  
to Dea M. Antonelli '78

Dr. John E. Rogan '73  
to Maren Jane Wippert

Thomas R. Clark '74  
to Mena daSilva

Kevin M. Haverly '74  
to Lori M. Walters

Peter C. Kelleher '74  
to Phyllis Ewell

Peter Slepcheek, Jr. '74  
to Kathleen Marra

Thomas J. Crowley '75  
to Jane E. Heselton

Mary Ann Greer '75  
to Robert J. Chase

Paul A. Johnston '75  
to Patricia Regan '83G

James Thomas McGrath '75  
to Carolyn Elizabeth Walsh

Albert J. Callahan III '76  
to Kathleen A. Crombie

Duane M. DeSisto '76  
to Linda S. Russell

Wayne F. Emard '76  
to Laura K. Boyd

Elizabeth C. Kelley '76  
to Thomas Vennerbeck

Frederic A. Marzilli '76  
to Jeanne DeCiantis

Joseph T. McLoughlin '76  
to Barbara Ann Joyce

Lisa Ann Mustone '76  
to Phillip Alexander

Jane Ann Bouley '77  
to Thomas A. Blanchette

Michael F. Dwyer '77  
to Holly Broomhead

Sarah V. Garcia '77  
to Timothy R. Lynch

Joseph E. Hanly '77  
to Ernestine Capaldi

William A. Humphrey '77  
to Lise M. Fischer

Elizabeth F. Kelleher '77  
to Charles J. O'Connor III

Frederick J. Mason III '77  
to Catherine M. Carroll

Dr. Robert R. Palozej '77  
to Rosemary D. Wood

James E. Traester '77  
to Gail A. Liefeld

Diane S. Uhlmann '77  
to Richard McCally

Edward John Abbiati '78  
to Julie Marie Walsh

John F. Colgan '78  
to Elaine M. Boland

John D. Condon '78  
to Elaine M. Pelletier

John L. Coyne, Jr. '78  
to Kathryn Anne Thomas

Kathleen E. Fanning '78  
to David J. Stuchiner

Roberta Fillippi '78  
to William D. Schneller

Sara Ann Higgins '78  
to Rodolph L. Nunn, III

Steven J. Maurano '78  
to Karen M. Ethier

Robert C. McPhail '78  
to Linda Nielsen

Mary Ann Methe '78  
to John P. Corriera

Christine Petteruti '78  
to Ronald Santacroce

Christine J. Picano '78  
to Gary Harkins

Loretta M. Sullivan '78  
to John T. Jones

Edmond Joseph Trudelle '78  
to Patricia Louise Mello

Joseph D. Tudino '78  
to Kathleen Pirniak

Joseph P. Wronkowski '78  
to Debra A. Pilkington

John J. Canham '79  
to Celeste Marquis

Kevin E. Currier '79  
to Diane C. Curvelo

Daniel E. Furnari '79  
to Vickie-Marie Zinzi

Marcia Jane Gosselin '79  
to Carmine C. Alfieri

Jayne Holly Green '79  
to Paul Rennie '80

Thomas J. Hayes '79  
to Patricia A. Gray

Michael L. Ivester '79  
to Louise McCauley

Raymond P. Kurkij, Jr. '79  
to Dana Alders

Charles P. Kwoleki, Jr. '79  
to Julie A. Cerroni

Jeffrey A. Macdonald '79  
to Diane J. Petersen

John P. Martone '79  
to Caroline Connor

Kathleen M. Murphy '79  
to Francis Garcia '80

Kevin Nallan '79  
to Susan Lagasse

Debra Lee Naumann '79  
to Harris Newman

Mary Jeanne Nienstadt  
to Owen J. Connolly

Steven Patriarca '79  
to Anna Schadone

Johnathan R. Roach '79  
to Jane E. Moss

Michael F. Tarpey '79  
to Darlene Pratt

Susan M. Walsh '79  
to Mark C. Kelley '79

Lauren Andrea '80  
to John A. DeSantis

Susan H. Berg '80  
to Robert J. Clark '80

Anthony J. Chioditti '80  
to Linda M. Smith

Christopher B. Colgan '80  
to Debra Asadoorian

Francis Edward DeSisto '80  
to Katherine Conway

David Michael Francke '80  
to Clare Dixon

Mary Beth Fritz '80  
to Timothy Hines

Elizabeth Galvin '80  
to Charles T. O'Neill '79

Walter A. Goula '80'  
to Lori Ann Hayes

Michael P. Griffin '80  
to Annette L. Couture

James E. Hyland '80  
to Judy R. Fields

James Long, Jr. '80  
to Lynn Neuberger

Ellen T. Martino '80  
to Thomas F. Ross '82

Sandra Mateja '80  
to Joseph Murphy

Joan E. O'Brien '80  
to Dean R. Lang

Elizabeth O'Leary '80  
to Steven M. Fludder '83

Elizabeth Anne O'Rourke '80  
to Timothy O'Sullivan

Edward P. Pieroni '80  
to Joan T. Little

Susan E. Regan '80  
to Thomas J. O'Brien

Deborah Anne Samolyk '80  
to Robert Joseph MacMillan '81

James E. Shannon '80  
to Susan M. Cohn

Jean M. Silvia '80  
to Christopher K. Mayer '82

Grace A. Slavin '80  
to Gregory Curnow '80

James Steven Smith '80  
to Lynette C. Stokes

David M. Tschaen '80  
to Patti A. Sheerin

Deborah M. Haberlin '80  
to Daniel E. Otero '80

Donald J. Agin, Jr. '81  
to Linda A. Merolla

Maura E. Andrus '81  
to Gary B. Page

Caroleen French '81  
to Peter Jolivet

Leigh Ann Hance '81  
to Salvatore D'Agostino

Elizabeth Marie Hergott '81  
to Michael F. Devine

Thomas R. Joyal '81  
to Kathleen Case

Margaret A. Lalor '81  
to Mike Appelbaum

Susan Marie Lanove '81  
to Joseph Bierbower

Ann T. Larkin '81  
to Keith J. Smith '81

Sharon Lynn McCarthy '81  
to Alan James Doyle '80

Kathleen J. McGann '81  
to James L. Elcock '81

David Bradley Morse '81  
to Mary Elizabeth Sinatra

Therese A. O'Hara '81  
to Glenn A. Krebs

Cynthia L. Plante '81  
to Michael J. Day

Sandra J. Radcliffe '81  
to James W. Donaldson, Jr.

Lori A. Ruggieri '81  
to John Feery '81

Timothy Joseph Salley '81  
to Cecily A. Hassett

Dana E. Shepack '81  
to Michael P. Bisconti

Lisa M. Tedeschi '81  
to Elliot Gray, Jr.

Gina M. Bonito '82  
to John P. Nasznic

Susan A. Cahill '82  
to John B. Ireland

Eileen C. Casey '82  
to Leonard S. Ahern '80

Mary Ellen Clark '82  
to Edward B. Flynn III '81

Joseph A. D'Amelio '82  
to Lisa Ann Patrone

Kathy E. Fiore '82  
to Joseph Richer, Jr.

Michael Paul Fitzsimmons '82  
to Gina Ann Corracio

Regina M. Fogarty '82  
to Christopher J. Toomey

Sheila A. Galligan '82  
to Ronald Perry

Gina M. Guerra '82  
to David J. Tracy

Brian McEnergy '82  
to Lisa Knight

Deborah L. Megna '82  
to Stephen M. Thomas '82

Sheila J. Miller '82  
to E. Thomas Smith

Robert J. Moran '82  
to Lorraine A. Ruschin

Doreen O'Donnell '82  
to Paul F. Haas, Jr. '82

Robert J. Oscarson '82  
to Roseann Garcia

Debora M. Silva '82  
to Rui Coutinho

Barbara J. Vassallo '82  
to Mr. Ferrer

Mark A. Watkinson '82  
to Anne M. Demers

Joyce E. Bowers '83  
to Robert A. LeBlanc

Mark D. Goodwin '83  
to Christine M. Papagni

Catherine M. Hession '83  
to Kevin M. Douglass '83

Paul Stuart Hunt  
to Jennifer Lee Osborn

Margaret Hurley '83  
to Thomas Costa

Carrie LaRocca '83  
to Daniel J. Donovan, Jr.

Karen A. Lucy '83  
to Steven V. Wilson

Lisa Maldondo '83  
to Ray Treacy

Karen M. Silveira '83  
to Thomas Ferreira

Julie Stai '83  
to Joseph Trimble III '82

Deborah J. Stanley '83  
to Richard DeCoursey

Susan Ucci '83  
to Louis Mansolillo '82

Craig J. Wrigley '83  
to Karen Marie Martin

Please take a moment to complete and return the coupon at right so that we can include your personal news in a future issue of **Update**.



Name \_\_\_\_\_ Class Year \_\_\_\_\_

Address \_\_\_\_\_

City \_\_\_\_\_ State \_\_\_\_\_ Zip \_\_\_\_\_

News: \_\_\_\_\_

\_\_\_\_\_

☐ Please check if new address.

Return to the Alumni Office, Providence College, Providence, RI 02918

On the rise: The target completion date of July is well within reach as the construction of St. Thomas Aquinas Priory continues to run on schedule.



# PROVIDENCE UPDATE

Current News of Interest to Providence College Alumni and Friends  
March 1984

PROVIDENCE COLLEGE

PROVIDENCE, R.I. 02918

NON-PROFIT ORG.  
U.S. POSTAGE

PAID

PROVIDENCE, R.I.  
PERMIT NO. 561

ADDRESS CORRECTION REQUESTED