

# PROVIDENCE

## Bill Nero Named VP for Development

The Providence College Corporation recently approved the promotion of William T. Nero to the position of vice president for development at Providence College. Nero has been serving as acting vice president for development since Rev. Robert A. Morris, O.P., vacated the vice presidency last May to become resident director of the Providence-in-Europe program in Fribourg, Switzerland. A 1955 alumnus, Nero also holds a Master of Business Administration degree from Providence.

Nero joined the Providence College staff in 1967 as director of the alumni annual giving program. Since then he has progressed

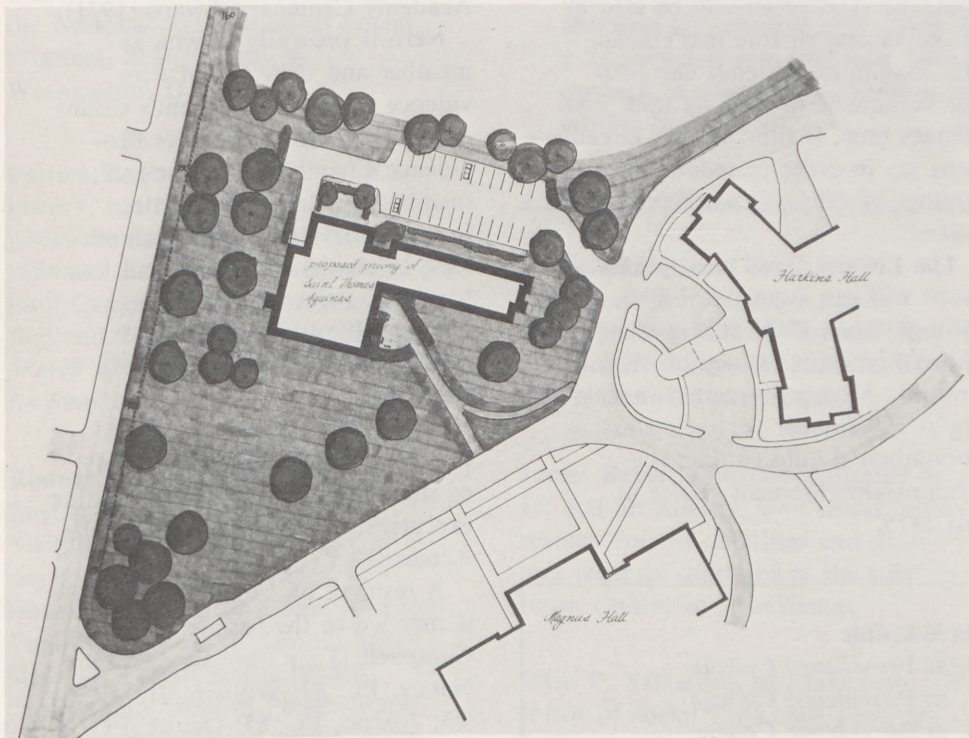
through the administrative ranks of the college and served as director of development (1968-1971), assistant vice president of development (1971-1978), associate vice president for development (1978-May, 1982) and acting vice president for development.

As vice president for development, Nero will report directly to the College President, the Very Rev. Thomas R. Peterson, O.P., and will continue to coordinate, supervise and implement local, regional and national fund-raising, alumni and related public information programs to generate maximum support for the college.

During Nero's tenure at Pro-



vidence College, the annual Loyalty Fund has grown from less than \$50,000 to \$785,000. Providence College has been cited annually — for the last 12 years — for its effectiveness.  
*(continued on page 2)*



## New Dominican Priory Approved by Corporation

Citing the need to renovate the Harkins Hall living quarters of the Dominican Community, along with the ever-increasing cost of making these improvements, the Providence College Corporation has passed a resolution to construct a new Dominican Priory on campus. Though specifics are still in the planning stage, the new building will be located off the main entrance to Harkins Hall, opposite Albertus Magnus. This location, which has been reserved for a Priory for many years, will appropriately serve to identify the college as being conducted under the auspices of the Dominican Friars.

The primary objective in designing the new residence is to provide an environment that will enable the Dominicans to live together as a religious community. Preliminary

*(continued on page 4)*

# UPDATE

## Campaign Successful on Road Trip

As the winter months draw to a close, the 1982-83 Loyalty Fund enters its "home stretch" with prospects for achieving the \$850,000 goal by June 30th looking favorable thus far.

Buoyed by a very successful round of special gift phonathons in the fall, the PC Alumni/Development staff, with the assistance of the Loyalty Fund committee, launched the major regional phase of the Fund drive in January. Phonathons were staged in Springfield, MA; Philadelphia; Short Hills, NJ; New York City; Albany; Newport, RI; Waterbury and Hartford, CT. At Hartford, under the aegis of area chairman Warren Howe '60, eighteen volunteers raised 130 pledges totalling \$8,754 — a new regional phonathon record.

Despite some snow and raw winter weather in February, a midwest campaign was capped by phonathons in Minneapolis, Chicago and St. Louis. As a prelude to the phonathons, alumni receptions were held at the Minneapolis Athletic Club, the Union League Club of Chicago and the home of Eugene Hanley '54 in the St. Louis area.

Meanwhile, to the south, the PC banner was unfurled in the Lone Star State at phonathons in Dallas and Houston planned with the assistance of area chairpersons, Ron Powers '67 and former Friar basketball star John Egan '61. The general chairman of the 1982-83 Loyalty Fund, Maurice C. Paradis '58, resides in Texas and was on hand to participate in the activities.

The February regional program finished with phonathons and receptions in Florida, hosted by

Gene Quinn '61 in Largo, Sheila and Jim Hagan '58 in Orlando and Mary and Dr. Adolph Motta '43 in Fort Lauderdale; Washington, D.C.; New Haven and Norwalk, CT, and New Bedford, MA. With just the Boston and Fall River, MA, areas remaining, the regional phase concludes in early March.

Thus far the Loyalty Fund drive has produced 6,519 pledges totalling \$676,608 of which \$483,680 has already been collected. This places the current Fund ahead of last year's record pace which, at approximately the same time, had produced 5,909 pledges totalling \$626,954.

In announcing that the next phase of the drive would be the class phonathons, Chairman Paradis praised the regional volunteers for their outstanding efforts and especially for "the dedication and enthusiasm that keeps the PC spirit alive in areas far away from the campus." Mr. Paradis further remarked that, "although the totals to date reflect 78% of the \$850,000 goal, the class phase will be crucial to the success of this year's fund. Our alumni and friends can help our volunteers by making their own pledges now, if they haven't already done so, in order to reduce the number of calls our workers must make."

The Loyalty Fund class phonathons will run from April 4th through April 12th, at a special phonathon center set-up on the campus. Anyone interested in serving as a volunteer for their class phonathon should contact the Alumni/Development Office at 865-2415.

### Class Phonathons Schedule

Classes of 1923-1949, April 4, at Providence College  
 Classes of 1950-1959, April 5, at Providence College  
 Classes of 1960-1964, April 6, at Providence College  
 Classes of 1965-1969, April 7, at Providence College  
 Classes of 1970-1975, April 11, at Fleet National Bank  
 Classes of 1976-1982, April 12, at Fleet National Bank  
 If you can lend a couple of hours of time during your class phonathon, please call the PC Development Office at 401-865-2415. All phonathons begin at 6PM.

## Nero Promotion - continued

tive fund-raising programs by the Council for the Advancement and Support of Education (CASE); Providence has won three national awards for improvement and sustained performance during this same period.

The college's alumni programs and activities have been greatly expanded under Nero's direction, and in the last seven years, alumni annual giving participation has steadily increased from 26% to 42%, which is more than double the national average.

Providence College honored Nero in 1978 with the Very Rev. Vincent C. Dore, O.P., Award presented by the Greater Providence Alumni Chapter, and again in 1982, when he was the recipient of the National Alumni Association's Father Begley Faculty/Staff Award for Distinguished Service and Dedication to Providence College. He has also received the Crestwood Association Distinguished Citizenship Award (1969) and the LaSalle Academy Centenary Award (1971).

Nero is presently serving as member and secretary of Providence College's President's Council; member of the Greater Providence Chamber of Commerce; member of Catholic Charities Special Gifts and Parish Committees; Eucharistic Minister and Lecturer at St. Robert Bellarmine Church, Johnston; and board member and treasurer of Youth Visions, Inc.

He has also served as Grand Knight of the Tyler Council (#45) of the Knights of Columbus and as executive vice chairman of LaSalle Academy's Centennial.

A resident of Johnston, RI, Bill is married to the former Ann M. Campbell. They have six children: Nancy, PC '82; William, Jr., PC '83; Joseph, PC '85; Daniel, PC '86; Patrick and Christopher.

He is the son of Henrietta (Petorella) Nero and the late Joseph Nero, Sr.

---

## Faculty Notes

---

**Joseph H. Doherty**, associate professor of library sciences, was re-elected Chairman of the Consortium of RI Academic and Research Libraries.

**William Hudson**, associate professor of political science, will present his paper entitled "Undergraduate Public Administration Education and the Liberal Arts," at the forthcoming national meeting of the Political Science Association.

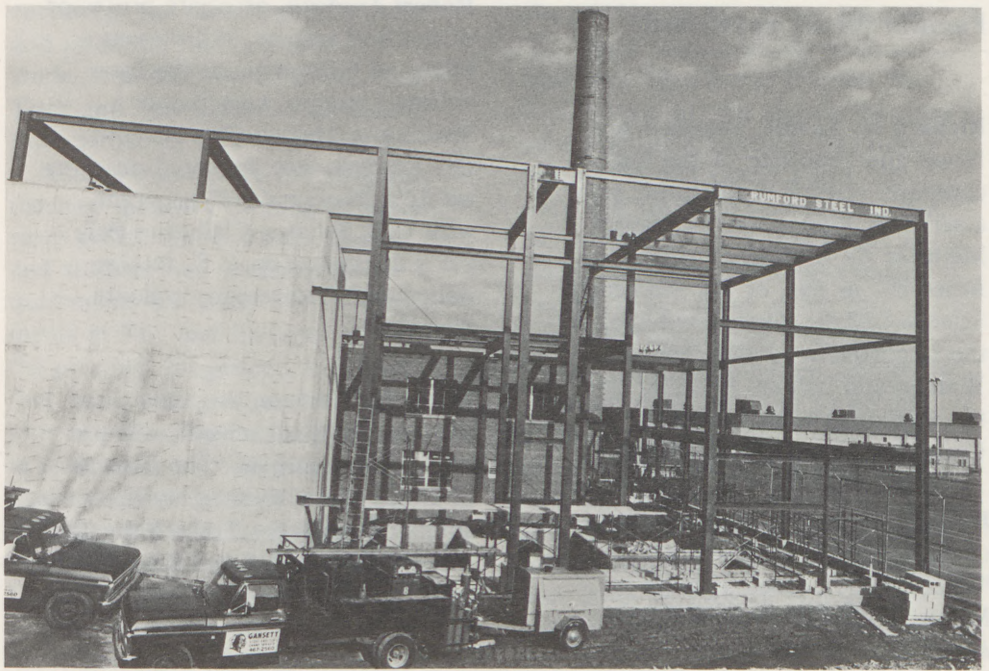
**Mary Anne Sedney**, associate professor of psychology, will present a paper entitled "Growing More Complex: Conceptions of Sex Roles Across Adulthood," at the Association for Women in Psychology Meeting being held in Seattle.

**James F. Flanagan**, associate professor in the social work division, served as chairman of a panel of researchers participating in the Clinical Social Work conference of the National Association of Social Workers, held recently in Washington, D.C.

**Patrick T. Conley**, professor of history, has had the following books on RI history published: *Providence: A Pictorial History* (with Paul Campbell); *Rhode Island Profile*; and *The Blackstone Valley: A Sketch of Its River, Its Canal, and Its People*.

**Rodney Delasanta**, professor of English, has been appointed a Visiting Professor at Brown University for the spring semester; he is teaching a course on Chaucer in the English Dept. Dr. Delasanta has also had a short article entitled "Spleen and Wind in Pope's 'Rape of the Lock,'" in the current issue of *College Literature*.

**Mark N. Rerick**, professor of chemistry, received the 1982 Outstanding Faculty Award for Dedication to Students by the PC Phi Chi Club.



*Construction is currently underway on the College's new \$4.7 million coal conversion project. The project, designed to save PC approximately \$20 million over the next 20 years, will provide heat and electricity through two coal-fired, fluidized bed, combustion boilers. The plant's four existing oil-fired boilers will be retained for emergency and high peak periods. The recommendation for coal conversion came from the engineering firm of Halliwell Associates, Inc. in a June, 1980 feasibility study. Construction by the Bailey Building Company began last fall following the approval of the U.S. Environmental Protection Agency. Running on schedule and within budget, the project is being financed by a \$1.8 million low-cost loan from the U.S. Department of Education and through low-interest, long term, tax exempt bonds. It is expected to be on-line by October.*

---

**Patricia Lawlor** of modern languages, presented her paper "Lautreamont and Modernism" at the Modern Language Association's convention in Los Angeles.

**James Baker**, associate professor of art and art history, won enthusiastic reviews for his paintings and drawings recently exhibited at the Lily Iselin Gallery in Providence.

**Ellen P. Salvatore**, assistant professor of social work, has been appointed to the State Planning Committee of the Governor's Council on Mental Health. She has also been elected chairperson of the Committee on Nominations and Leadership Identification for the RI Chapter of the National Association of Social Workers.

**Elaine O. Chaika**, professor of linguistics, presented her paper entitled "Normal and Psychotic Encoding of Narrative" at the Linguistic Society of America's annual meeting in San Diego. Dr. Chaika recently gave a lecture at Rhode Island College on "What Makes People Learn and Keep Foreign Language." In addition, her book, *Language in Society*, has been published by Newbury House.

**Judith K. Jamieson**, instructor in German in the modern language dept., presented a paper on "The College Consortium for Cooperative Study" at the National Association of Academic Affairs' Northeast Regional Convention held in Providence.

*(continued on page 4)*

---

**Faculty Notes continued**


---

**Richard H. Lavoie**, associate professor and chairman of the math-computer science department, gave a series of lectures on "Statistical Methods As Applied to Biomedical Research" as part of the Biomedical Science Lecture Series conducted by the Department of Pediatrics of Women and Infants Hospital and the Pediatrics section of Brown University's Program in Medicine.

**Hugh F. Lena**, associate professor of sociology, wrote a chapter on "Health Care" which appears in Melvin L. DeFleur's *Social Problems in American Society*.

**Lydia Black**, associate professor of anthropology, presented the following papers at the Third Inuit Studies Conference in London, Ontario, Canada: "Eskimo Motifs in Aleut Art and Folklore" and "Aleut Sculpture and Carving." Dr. Black's article on archival research methods appears in the journal, *Ethnohistory* (Vol. 29, No.1) under the title "The Daily Journal of the Rev. Father Juvenal — A Cautionary Tale," and her review of the book, *Kitovaia Alleya/Whalebone Alley* appears in the current issue of *ARCTIC*, a journal published by the Arctic Institute of North America.

**Gerard P. O'Leary**, professor of biology, presented the following papers at the 5th Symposium of the North American Apiotherapy Society held in Washington, D.C.: "The Separation of Venoms by Ultra Thin Layer Agarose Isoelectric Focusing," and "An Initial Investigation Into the Antimicrobial Effect of Propolis."

**C.V. Reichart, O.,P.**, professor emeritus of biology, has had the following articles published: "An Addition to the Genus *Anisops* of Australia" in the *Proceedings of the Entomological Society* and "Semi-Aquatic and Aquatic Hemiptera of Rhode Island" in *Biological Notes*. Fr. Reichart recently returned from a research trip to Nigera.

**Robert Trudeau**, associate professor of political science, will present a paper on Guatemala at the International Studies Association Meeting in Mexico City in April. Dr. Trudeau also appeared on channel 12's "Newsmakers" program, with U.S. Senator Claiborne Pell, for a discussion on U.S. foreign policy and involvement in South America.

**James M. Carlson**, associate professor of political science, will present a paper entitled "The Effects of Crime Show Viewing by Pre-adults on Attitudes Toward the Legal System and Legal Knowledge," at the annual meeting of the Western Political Science Assn. in Seattle, Washington. Dr. Carlson also presented a paper on "The Impact of Ethnicity on Candidate Image" at the Northeastern Political Science Association's annual meeting in New Haven.

**Mark S. Hyde**, associate professor of political science, collaborated with **Dr. Carlson** on a paper entitled "The Candidate — Oriented Party Activist," which appeared in the Oct. '82 issue of the *Social Science Journal*.

**Ted Holmberg**, special lecturer in English (journalism) and editor/publisher of the Pawtuxet Valley *Daily Times*, has been elected president of the New England Society of Newspaper Editors.

**Herb D'Arcy**, director of financial aid, was elected to represent New England colleges and secondary schools on the College Board National Nominating Committee, which is responsible for reviewing and selecting candidates who serve on the governing bodies of the College Board and College Scholarship Service.

**Jacqueline F. Kiernan**, director of the Counseling Center has been reelected to the executive board of the College Personnel Association of RI. She is serving as secretary-treasurer.

**Ken Slaysman**, assistant professor of economics, presented his paper on "The Health Economic Impact of the Three-Mile Island Accident," at the American Public Health Association's Meeting in Montreal.

**Edward A. Sullivan**, associate professor of education, gave a presentation on "Learning Modalities" at the annual Teachers' Institute sponsored by the National Education Association/Rhode Island.

**Catherine L. Keating**, assistant professor of special education, recently presented her paper entitled "The Relationship Between the Vestibular System, Dyslexia and Reading in a Selected Population; a Clinical Study" at the International Association for Learning Disabilities Meeting in Washington, D.C.

**Bro. Jon Alexander**, assistant professor of history and special lecturer in religious studies, has had his article entitled, "Andreas Bernardus Smolnikar: American Catholic Apostate and Millennial Prophet" accepted for publication by *The American Benedictine Review*.

**Robert LaMontagne**, assistant professor in the engineering-physics-systems-department, presented a paper entitled "Evidence for Cloud Top Mixing in Small Cumuli" at the American Meteorological Society Conference in Chicago.

---

**New Priory - continued**


---

plans call for the Priory to house a chapel, which will enable the entire college community to participate in the liturgical life of the Dominicans, a refectory and a common recreation room. The number of rooms has not yet been determined; however, the current practice of housing some Dominicans in student dormitories will continue.

Further information will be reported in future issues of *Update*.

## Alumni/Admissions Begin New Recruitment Program

Providence College's Alumni and Admissions Offices have launched a new program designed to provide personalized, direct contact between prospective students and the College. Established this fall, the Alumni-Student Recruitment program (ASR) helps to bring PC to areas of the country where it is financially infeasible for either students or the College to travel for personal visits.

Currently involving over 40 alumni in three pilot areas of Washington, D.C., Chicago and Philadelphia, the ASR program enables prospective students to learn more about the College via personal contact with alumni residing in their geographic location. Although this does not have the overall effect of a campus visit — which the Admissions Office recommends — it does

encourage the same type of service and attention that is available to students in the New England, New York and New Jersey areas due to their proximity to Providence.

Alumni involved in the program received intensive training in admissions policy and criteria, campus and student life, academic requirements for many of the departments at PC, and financial aid. As the program progresses, it is hoped that participating alumni will not only attend college night programs in their area, but will also interview students, hold career information sessions, and develop avenues for students to learn more about the College.

The Washington area committee hosted the first ASR student reception in January, which was attended by approximately 20 prospective students and their parents along with the following ASR members: Jim Carty '61, Washington Coordinator; Michael Demcsak '66; Joseph Early '54; Tony Fay '77;

Harvey Hamel '61; Karen Ignagni '75; Larry Landgraff '68; Rick Maurano '69; George O'Brien '65; Bob Owens '61; Ed Shevlin '54; and Jane and Steve Silvestri '78. John Motley '66 and David Leiter '76 were also on hand to represent the DC Alumni Club. Other guests included the Very Reverend Charles Farrell, O.P., Prior of the Immaculate Conception Priory.

The informal gathering featured a PC slide show followed by an admissions presentation highlighting programs of study, campus life, housing, financial aid, counseling and career placement and admissions standards. Use of the reception room on Capitol Hill was arranged by the Honorable Fernand J. St Germain '48.

If you have any questions about PC's Alumni-Student Recruitment program, contact co-directors Kathy Massone, assistant director of admissions, 401-865-2140 or Tony Gwiazdowski, assistant director of alumni/development, 401-865-2415.

# PROVIDENCE COLLEGE ALUMNI ASSOCIATION

presents

## An Alpine Country Tour

Frankfurt and Munich

8 Days/7 Nights

# \$599\*

Boston & New York

Extend Your Dream Vacation for an additional 7 Nights in

## Switzerland & the Black Forest

# \$199\*

Additional

\*Plus 15% tax and services per person. Based on Double Occupancy.

Single Occupancy For One-Week Program \$150.00 Additional. For Two-Week Program \$250.00 Additional.

DEPARTING SUNDAY, JULY 17, 1983. RETURNING MONDAY, JULY 25, 1983.

**DEPARTING**

- July 17, 1983
- July 17, 1983

**DEPARTURE CITY**

- Boston
- New York

**PRICE**

- \$599.00 + 15% (\$89.85) = \$688.85
- \$599.00 + 15% (\$89.85) = \$688.85

**PLUS 1 WK. EXTENSION**

- \$917.70
- \$917.70

**Your trip includes:**

- \* Round trip jet transportation via Arrow Airlines or similar.
- \* Inter - city transportation via motorcoach.
- \* Optional dining program.
- \* Pre - registration at your hotels.
- \* Much more . . .

For further information contact Diane Childs at Prov. College (401) 865-2414.

## Sports Update

by

*Rich Lewis, Sports Information Director*

As the snow slowly melts and spring seems to be just around the corner, perhaps it's time to look back just a bit on what's happened athletically at PC. There have been some noteworthy accomplishments even though men and women's basketball and ice hockey still have games left, and all of the spring sports are yet to be played.

Men's cross country again dominated the news in the fall (see accompanying story), but tennis and golf came up with some sparkling individuals. Freshman Chris Lyons (Stoughton, MA) and junior co-captain Mike Curran (Newport, RI) won the BIG EAST Conference doubles championship at the Concord Hotel in the Catskills while senior co-captain Chris Ditmar (Pittsfield, MA) made the All-Conference team for Coach Jacques Faulise's team. Lyons and Curran were also the singles finalists at the Concordia Open in Montreal.

Coach Bill Doyle's soccer team, playing its strongest schedule ever, finished an even 7-7-2, losing a pair of tough 3-2 decisions to both Brown and NCAA power Connecticut at the end of the season. On a squad of 15 underclassmen, a freshman, John Farren (Reldale, Ontario) had a team-leading 13 goals and six assists. Next in scoring was another freshman, Brendan Lynch (Stony Point, NY) with seven goals and three assists. Senior tri-captain Frank (the Cat) (Wilmington, DE) had a truly outstanding fall, in goal, with a solid 1.31 goals against average.

Junior Otis Thorpe (Boynton Beach, FL) and senior Ron Jackson (Roxbury, MA) were a consistent 1-2 punch for the basketball Friars. The team took its longest road trip in history this winter to play in the prestigious Rainbow Classic in Honolulu, which included stops in Omaha (Creighton) and Provo, Utah (Brigham Young) along the way. Once again, Joe Mullaney's club, while short on offensive power, has provided some excite-

ment, and, with the advent of cable TV, several PC games were picked up nationally.

The biggest news of the winter, though, was generated by the ice hockey team which, in the second week of February, had vaulted to No. 1 in the country. Ahead, as of this writing, were the playoffs for coach Lou Lamoriello's gang, which already has won more games than any other team in PC history. The hockey Friars have been consistent all winter, never losing two games



*Volleyball Co-Captain Judy Barnes*

in a row. It has been a team without a star, but one with a strong group of seven seniors and a lot of talent which, collectively, has played well together and most unselfishly. Hopefully, by the time you get to read this, the skaters will be in either the ECAC or NCAA finals.

In the meantime, PC's spring sports teams have been working inside and waiting for the snow to melt. The baseball team began con-

ditioning drills back in December and full-fledged workouts the end of January. Don Mezzanotte's team won't be going to Florida this spring; instead they will be in the Washington, D.C. area during the third week of March.

The Lady Friar volleyball team — for the fifth straight year — had an outstanding season, finishing 30-17 and third in the first BIG EAST championships which were hosted by PC in Alumni Hall. Coach Dick Bagge's squad was led by senior co-captain Liz Calvini (Mamaroneck, NY) and sophomore Judy Barnes (Bedford Hills, NY).

The field hockey team, upgrading and playing strictly for the first time ever, struggled through a 7-12 fall, but junior Jackie Gladu (West Newton, MA) was simply outstanding, scoring 17 of the team's 47 points, which included 13 goals, and was named the first PC player to be named All-East.

Seniors Ann Marie Mancini (Milton, MA) and Nancy Curtin (Needham, MA) were single finalists in the BIG EAST tennis championship and helped coach Gail Sullivan's club to a fifth place finish (among nine schools) and to a 7-5 dual-match record.

Women's cross country, a team which was really made up of middle distance runners who are stronger in indoor and outdoor track, was seventh in the BIG EAST meet and eighth in the New Englands. The top runners in the fall were senior Jean McCrorie (Smithfield, RI), sophomore Sue Montambo (Westwood, MA) and freshman Cheryl Smith (Westerly, RI). This winter, not surprisingly, the Lady Friars have been big winners in basketball and hockey.

Junior Kathy Finn (Atlantic Highlands, NJ) and senior Kerry Phayre (Cranston, RI) have led the women's basketball team to a spot at the top in the BIG EAST and, at the time of this writing, were awaiting the first BIG EAST championship, which will be held in PC's Alumni Hall. The BIG EAST championship winner receives an automatic bid into the NCAA tournament. Finn is a Wade Trophy nominee (given to the most outstan-

ding woman's player in the nation; only 30 women nominated) and Joe Mullaney, Jr. is a coach-of-the-year nominee.

The Lady Friars continue to be strong in ice hockey, too, looking ahead for their fourth straight trip to post-season tournament competition which this year will be at Northeastern. Again, the Lady Friars rank right behind New Hampshire, and the leading scorers have been Cindy Curley (Stow, MA), Sue Passander (West Haven, CT) and Donna Salvoni (Natick, MA).

So, the little Dominican College in the nation's smallest state continues to produce outstanding athletes. So much this year has been accomplished and so much more will be by the time the spring seasons end.

---

## Runners Maintain National Prominence

---

Like good wine, the Providence College cross country team gets better and better; it never spoils and it continues to impress everyone.

A year ago, the running Friars came through with the most successful season of any team in any sport at the college when they won the New England championship for the eighth straight year; the BIG EAST championship for the third straight year; their first IC4A championship (tantamount to the Eastern title) and finished as the NCAA runnerup.

So, this past fall Coach Bob Amato and his troupe had lofty goals to maintain.

To the surprise of no one, the Friars successfully repeated what they had done in 1981 except it might have been a bit more meaningful this time around because the team had to overcome a lot of injuries and was without its top two runners from '81 — Ray Treacy and Geoff Smith.

But when it got down to the nitty-gritty, a senior, Brendan Quinn (Waterford, Ireland) and two



*Peter Taglianetti (3) and Steve Taylor back on defense.*

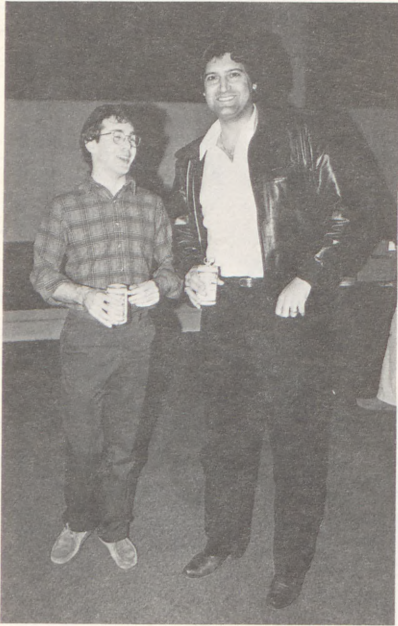
sophomores, Steve Binns (West Yorkshire, England) and Richard O'Flynn (Cork, Ireland) picked up the slack.

Quinn-Binns-O'Flynn finished 1-2-3 as the Friars ran away with the BIG EAST title. Then Quinn and O'Flynn ran 1-2 as the Friars romped in the IC4A meet. Quinn sat out the New Englands, so Binns just nipped O'Flynn for the top spot while junior Charlie Breagy (Ardee, Ireland) was third, senior Jim Fallon (Galway, Ireland) was fifth; senior Paul Moloney (Limerick, Ireland) sixth and freshman Mike Capper (Liverpool, England) seventh.

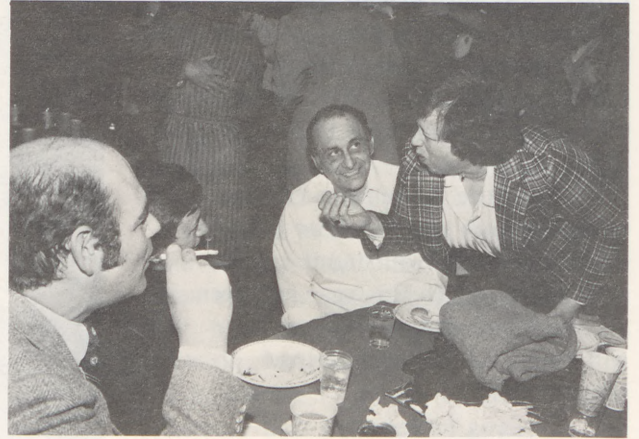
But in the NCAA meet at the University of Indiana, Quinn (12th

over-all), Binns (15th) and O'Flynn (17th) all earned All-America status as the Friars finished second in the nation. Fallon, Breagy and Moloney added the final points for PC.

"It was another remarkable year," said coach Bob Amato. "Our young men put in a tremendous amount of training, a lot of hard work which ended up paying off simply because these guys refused to be beaten. In every meet, it seemed, they dug down a little deeper to make sure the team would win. So, what we accomplished this year perhaps means just a bit more than a year ago and we say this to by no means diminish our 1981 accomplishments."

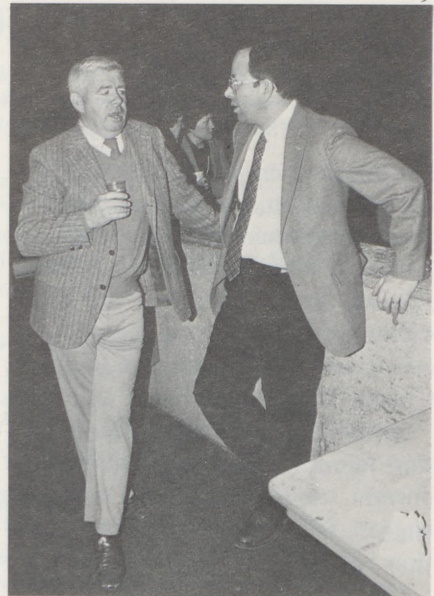


# Homeco





# ming 1983



Photos by Dave Witbeck

## Alumni Association Seeks Nominations

During the next two months, Alumni Association Committees will be reviewing nominations for 1983 Alumni election candidates, 1983 Alumni Award recipients and candidates for the post of Alumni Association Representative to the College Corporation.

Active members of the Association (alumni who contributed to the current Loyalty Fund) are invited to suggest fellow alumni for consideration by these selection committees.

The details involved are . . .

### ALUMNI ASSOCIATION ELECTIONS

The offices open for election for the 1983-84 year are vice president, secretary and treasurer. Three elected slots on the Alumni Board will also be filled this year, with one person each representing the three class groups of 1948-52, 1968-72 and 1978-82. Two candidates are selected for each post and the winner is chosen by an election. Ballots and biographical information about the candidates will be mailed to every active alumnus in May.

To nominate someone, send a letter to the Alumni Office (attn. Nominating Committee) identifying the person and what post you are recommending him or her for. Include a personal resume of the candidate or other appropriate information to support your nomination.

### ALUMNI AWARDS

Three traditional Alumni Association sponsored awards are presented each year at the National Alumni Awards Dinner on campus. The "Alumni Distinguished Service Award" honors an alumnus with an outstanding record of service to the College. The "Personal Achievement Award" is presented to an alumnus who has attained an exceptional level of achievement in his or her profession or field. The "Faculty/Staff Award" is an honor bestowed upon a member of the

(continued on page 15)



*During Homecoming Weekend, alumni were invited to participate in a lively panel discussion on "The Nuclear Dilemma." Panelists included Senator Christopher J. Dodd (D-CT), pictured above, a member of the U.S. Senate Committee on Foreign Relations and a 1966 alumnus; John Weltman, professor of strategy at the U.S. Naval War College in Newport and an expert on nuclear arms; and William E. Hudson, associate professor of political science at PC and director of the Public Administration Program. Dr. James H. McGovern, associate vice president for academic affairs, served as moderator for the program.*



# CLASS NOTES

## 1935

*Francis Conway* of Wellesley, MA, was appointed by President Reagan to be a member of the Foreign Claims Settlement Commission in Washington, DC.

## 1938

*John Dempsey* of Groton, CT, former governor of CT, was appointed a director of Mott's (ShopRite) Super Markets, Inc.



*John H. Fanning* of Washington, DC, recently retired from the National Labor Relations Board after a record 25 years of service as a presidential appointee to the Board. During the Ford and Carter administrations, he served as chairman of the NLRB. A recently-held testimonial dinner to honor Mr. Fanning was attended by over 700 people in Washington.

## 1942M

*Domenic R. DiLuglio* former Superintendent of Schools in Warwick, RI, for 12 years, accepted an appointment as special assistant to the president of New England Institute of Technology with campuses in Providence and Warwick, RI, and West Palm Beach, Florida. DiLuglio was honored for his long and distinguished service to education with the awarding of a Doctorate in Public Education by the University of Rhode Island.

## 1942D

*John R. Partington* of Bristol, RI, has been inducted into the Rhode Island Tennis Coaches Hall of Fame.

## 1945

*Gabriel S. Azzaro* of St. Bernadette Parish, New Haven, CT, has been ordained a permanent deacon in the Cathedral of St. Joseph.

## 1950

*Edward A. Dragon* of New York, NY, has been appointed Senior Regional Legal Advisor, Agency for International Development. He is posted at Nairobi, Kenya.

## 1952

*Francis Holbrook* of Portsmouth, RI, has been named executive vice president of the Rhode Island Chamber of Commerce Federation.

## 1954

*Robert J. Perry* of Silver Springs, MD, a career National Labor Relations Board attorney, has been named chief counsel to Chairman John C. Miller.

## 1956

*Harold M. Davis, Jr.*, has been promoted to major general in the Army. Davis and his wife, the former Madeline J. Murphy, live at Fort Meyer, VA, with their four children.

*Edward J. Lynch* of Barrington, RI, has been named executive vice president of Health Care Review, Inc.

## 1957

*Daniel T. Burns, Jr.* of West Warwick, RI, was promoted to Colonel, US Army Reserves Chief Combat Arms Division, 76th Division Maneuver Training Command.

*Francis J. Cinelli, Jr.*, has been appointed Superintendent of Schools/Supervising Principal of the Plainville, MA, School System.

*Kenneth R. Walker* of East Providence is currently an associate professor of secondary education at Rhode Island College.

## 1958

*John E. Boyd, M.D.* of Milford, CT, has been installed as secretary of the Milford Hospital Medical Staff.

*Rene Cote* of Centerville, DE, of the DuPont Company Electronic Materials Division, has been named president of the International Society for Hybrid Microelectronics.

*Charles F. Gould* of Woonsocket, RI, was honored as the Woonsocket Kiwanis Club's 32nd "Citizen of the Year" for his lifelong and extraordinary dedication to youth.

## 1959

*Augustine Capotosto, Jr.* of Cranston, RI, was recently inducted into the Cranston Hall of Fame. He is chief of laboratory services at Electric Boat Division of General Dynamics and has been a member of the State Board of Regents since 1973.

*John J. Dwyer*, of South Burlington, VT, has been named president and chief executive officer of the Vermont Transit Bus Company.

*Robert C. Gallo, M.D.* of Bethesda, MD, was named a recipient of the 1982 Lasker Award for biomedical research. Thirty-six of its previous winners have gone on to win the Nobel Prize.

*John W. Harding, M.D.* of Worcester, MA, has been named coordinator of pediatrics at Worcester Hahnemann Hospital.

## 1960

*John J. Bagshaw, M.D.* is president and director of PHYSIS Incorporated, the first of its kind, medically directed center for health care through prevention and fitness. Dr. Bagshaw was head of the Marin County General Hospital Coronary Care Unit before he founded PHYSIS several years ago. Located in San Francisco, CA, PHYSIS will soon be expanding nationally.

*Joseph M. Cianciolo* of East Greenwich, RI, is chairman of the Drive for the Rhode Island Philharmonic Orchestra this year.

*Daniel E. Conney* of Edina, MN, has been elected chairman of the Federal Executive Board (FEB) of Minneapolis-St. Paul. The FEB represents 150 federal offices and more than 16,000 federal employees.

*Leonard J. Stauffer* of Port Republic, MD, has been promoted to chief, recall and notification branch, Office of Medical Devices, of the Food & Drug Administration in Silver Spring, MD.

## 1961

**Dennis J. Maloney** of Needham, MA, has been appointed director of marketing of the Sweetheart Paper Products Company.

**Arthur E. Thompson** of Milford, MA, has been named an assistant professor at Bunker Hill Community College in Boston.

## 1962

**George F. Kennedy** of West Hartford, CT, has been promoted to director — office management services at Northeast Utilities.

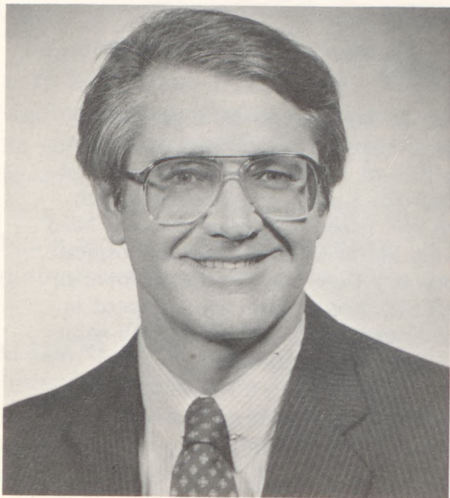
**Lawrence A. Redmond** of Ft. Bragg, NC, was recently promoted to full colonel in the US Army. He was also selected to attend the Royal College of Defense Studies in London, England.

**Daniel J. Sullivan** of Wrentham, MA, has been appointed clerk-magistrate of the Attleboro District Court.

## 1963

**Arthur Leonard** of Cumberland, RI, has joined Lou Allen & Sons food brokers where he is the new vice president of operations.

**Thomas J. O'Leary, Jr.** of Andover, MA, has been sworn in as a member of the Regional Advisory Council on Economic Development.



**William F. Frain** of Holyoke, MA, was recently selected to receive the two highest awards for production excellence by Kidder, Peabody & Co., Inc., the international investment banking firm. Frain was the only account executive nationwide who was chosen both as a member of Kidder, Peabody Associates (comprised of the top 25 sales achievers) and the Kidder, Peabody Round Table (comprised of 15 leading sales-people using insurance products in financial planning).

## 1964

**Gene Horton** has recently written and published an 85-page local history book entitled "Blue Point Remembered" about his hometown on Long Island, NY. Gene holds a BA and MA in history from PC and teaches 7th and 8th grade Social Studies on LI.

**Peter J. Conn**, associate dean at the University of Pennsylvania and associate professor of English, has completed his book, "The Divided Mind: Ideology and Imagination in America." It will be published by Cambridge University Press.

**Francis J. Devlin** of Houston, TX, has been named chairman of the marketing legislative subcommittee of the Texas Mid-Continent Oil & Gas Association.

**Eugene Kenney** of Harrisville, RI, was recently appointed chairman of the modern math department at Burrillville High School.

**Robert J. Mathieu** of West Hartford, CT, has been elected a secretary at the Hartford Insurance Group where he is a director of bond claims.

**Richard Morry** of Wells, Maine, was recently appointed an instructor to teach Spanish at St. Joseph's College in Windham, Maine.

**Raymond Rugg** of North Kingstown, RI, was promoted to manager of construction marketing of the Stone & Webster Engineering Corp. of Boston, MA.

**Thomas Wilder** of Burke, VA, has been promoted to Lieutenant Colonel in the U.S. Army. He is assigned as the Computer Specialist, Military Personnel Center, Alexandria, VA.

## 1965

**Ronald M. Chaput, D.D.S.** of Carlisle, MA, will serve as general chairman of the Yankee Dental Congress in Boston.

**Jeffrey R. Kelly** of Newton, MA, has been appointed to the position of senior vice president for administration and chief operating officer for Newton-Wellesley Hospital.

**Rev. Thomas McCreesh, O.P.**, of Washington, D.C., has received his Ph.D. in Semitic language at the Catholic University of America. He is now teaching Scripture at the Dominican House of Studies in Washington.

**William E. Coleman** has edited a book entitled "Phillipe de Mezieres' Campaign for the Feast of Mary's Presentation" which was published recently by the Pontifical Institute of Medieval Studies, Toronto. Professor Coleman is an associate professor of English at John Jay College of CUNY.

**Major Albert W. Beaton III** received the Meritorious Service Medal for outstanding service in Germany. Presently assigned to the Concept Analysis Agency in Bethesda, MD, Beaton has been selected to attend the Army Command and General Staff College at Ft. Leavenworth, KS.

## 1966

**Dr. Edward J. Sare** of Clinton, OH, has been appointed Director of Research, Performance Products for the Agricultural & Performance Chemical Division of PPG Industries.

## 1967

**Ronald Menezes** of Portsmouth, RI has been designated by the Society of Certified Insurance Counselors as a certified insurance counselor.

## 1968

**Richard E. Arrighi** of Pawtucket, RI, has been elected vice principal of Slater Junior High School.

**Dr. Roland A. Champagne** of St. Louis, MO, has been awarded one of five University of Missouri Weldon Spring Fellowships.

**Lt. Colonel Gerald F. Dillon, U.S.A.**, was promoted to his present rank on November 1, 1982. Currently the Director of U.S. Army Ranger Training at Fort Benning, Georgia, he was recently selected as Distinguished Honor Graduate of both Jumpmaster and Pathfinder Schools. LTC Dillon was selected for battalion command and will assume command of an Infantry battalion (3-36 In) in Butzbach, Germany in May, 1983.

**Thomas F. Mullen** of Laconia, NH was recently named senior vice president of the Indian Head National Bank in Nashua, NH

## 1969

**Edward J. Dempsey III** of Somerset, MA, was recently appointed athletic director at the Bristol-Plymouth Regional Technical High School.

**Hugh T. Devine and Thomas F. Devine** '71 are President and Vice President respectively of Devine and Partners, Inc. of Norwell, MA. Devine & Partners, Inc. is the result of the recent merging of Institutional Advertising Associates & Inventive Marketing.

**Edward Fogarty** of Washington, D.C., has joined in the formation of the law firm of Baenen, Timme, DeReitzes & Middleton with offices in Washington, D.C. and Anchorage, Alaska.

**Gregory J. O'Connor** of Roanoke, VA, was recently named to a two-year term on the Diocese of Richmond School Board. He is currently the principal of Roanoke Catholic High School.

## 1970

**Richard J. Connaughton** has been promoted to divisional merchandise manager of automotive, hardware and paint at Zayre Corporation in Framingham, MA.

**Ralph F. Palieri** of Norwalk, CT, is among four financial officers elected by AMAX, Inc. of Greenwich.

**James E. Tooley** of No. Dartmouth, MA, was elected to the Board of Directors, Massachusetts Chapter of the National Association of Social Workers.

## 1971

**Norman C. Blanchette** of Woonsocket, RI, has been appointed vice principal of Woonsocket Catholic Regional Junior High School.

**John J. Glier** of Chicago, IL, has been appointed Vice President of John Grenzlbach and Associates — a Chicago based national consulting firm to colleges and universities.

**Eugene Marchand** of East Hartford, CT, was recently elected as President of the Connecticut Youth Services Association.

## 1972

**Michael P. Drzal** of Arlington, VA, has been promoted to Lieutenant Commander of the U.S. Coast Guard, Washington, DC.

## 1973

**Andrew D. Auld** of Greenville, RI, was recently promoted to Science Department Chairman of Burrillville High School.

**Robert D. Lavoie** of North Smithfield, RI, has been selected as administrator of the Greater Woonsocket Catholic Regional Schools.

**William Mega** has recently established a Pawtucket, RI, based freight company called Trafik Services, Inc.

## 1974G

**Emile Chevrette** of Chepachet, RI, has been appointed as the assistant superintendent for secondary education for the Pawtucket School System.

**Dennis Poyant** of New Bedford, MA, has been elected to a four-year membership on the elementary schools advisory board of the National Catholic Educational Association.

**Betty I. Ussach** of Fall River, MA, a District Court prosecutor for the past three years has resigned from the Bristol County district attorney's office to enter private law practice.

## 1974

**John N. Lancia** and his brother, **David R. Lancia** '78, have recently opened Joel Cleaners, Inc., in Cranston and West Warwick, RI.

**Stephen F. Hardy** of Warwick, RI, has been appointed vice president/regional officer of First Bristol County National Bank, Taunton, MA.

## 1975

**John A. Celona** of No. Providence, RI, was elected president of the North Providence Town Council.

**Arthur E. Williams** of Augusta, GA, has received a Doctor of Osteopathy degree from the University of New England in Biddeford, ME. He is presently a captain in the U.S. Army doing a residency in Family Practice.

**Timothy Kehoe** of Boston, MA, has been promoted to Associate Professor of Economics at M.I.T.

## 1976

**Robert S. Auld** of Greenville, RI was recently ordained a Baptist Minister and is serving at the Summit Baptist Church in Coventry, RI.

**Pasquale Lamarra, Jr.** of Providence, RI, was recently appointed as the assistant auditor for the Savings Bank & Trust Company of Newport.

**Mark McAndrew** of Westerly, RI, has been named chairman of that town's 1982-83 American Heart Association Campaign.

**Linda Morad** of New Bedford, MA, has been elected to the position of Vice President of the Commercial Loan Department by the board of directors at Baybank Trust Company.

**Patrick L. Muldoon** of Grosse Ile, MI, is now a Vice President for Administration at the Riverside Hospital in Trenton, MI.

## 1977G

**Marcelline A. Zambuco** of Warwick, RI, has been named the 1983 Rhode Island Teacher of the Year. She is a math and algebra teacher at the John F. Deering Junior High School in Warwick.

## 1977



**Alan J. Jacobs** has been promoted to assistant corporate controller of the A.T. Cross Company in Lincoln, RI.

**Robert G. Leeds** of New York, NY, was promoted to the rank of Lieutenant in the U.S. Navy. He was also designated a senior electronic warfare evaluator. He is currently assigned to the Fleet Air Reconnaissance Squadron Two based in Rota, Spain.

## 1978

**Mary L. Aquaira** of Naugatuck, CT, recently graduated from South George's University School of Medicine and is presently in residency training for Internal Medicine at St. Mary's Hospital in Waterbury, CT.

**William J. Becker, O.D.**, of New Britain, CT, a recent graduate of the New England College of Optometry in Boston, has joined Dr. Costos C. Poulos and Dr. Donald J. Higgins in the practice of optometry in Plainville.

**Anthony Bucci Jr.** of Providence, RI, has been hired as the legal counsel to the Rhode Island Board of Electrons.

**Joseph J. O'Neill, Jr.** of Woonsocket, RI, has been appointed to the position of Director of Admissions and the Registrar at Mount St. Charles Academy in Woonsocket.

**Maureen Rogers** of Providence, RI, has been promoted to Unit Claim Manager of Allstate.

**Ralph E. Tucci** of Fort Hood, TX, was promoted to Captain in the US Army. He will be assigned to the 2nd Armored Division Artillery at Fort Hood.

## 1979G

**John Renza, Jr.** of Cranston, RI, has been appointed to the board of trustees of Bryant College.

## 1979

**Mary Roberta Casey** graduated May 1982 from South Western University Law School and has been admitted to practice in California.

**Arthur B. Fair, III** of Natick, MA, has earned the designation of Certified Insurance Counselor.

**Mark Smith** of Trumbull, CT, was appointed a police patrolman in Trumbull, CT.

**Jeffery Struzenski** of Clinton, NY, has been named sales representative for Northeastern New York by the Abrasives Marketing Group, Norton Co.

## 1980G

**Darlene Ferland** of Pawtucket, RI, was installed recently as president of the St. Mary Academy Bay View Alumnae Association.

**Michael Muffs** of Sharon, MA, has been appointed principal of the Berlin Memorial School in Berlin, MA.

## 1980

**First Lt. James V. D'Attelo** of Barrington, RI, is the new commander of the honor guard at Fort Eustis, VA, U.S. Army Transportation Center.

## 1981

**Joseph Holland** of West Roxbury, MA, has recently joined the firm of Berry Insurance Agency, Inc., of Quincy as an Account Executive.



**Holly McFague** of Townsend, MA, has been appointed as a media buyer for Schmalenberger and Nargassans, Inc., of Boston.

**Nancy Tuttle Discenza** of New Orleans, LA, has joined the staff of NURSEFINDERS of New Orleans, Inc., a national supplemental nursing service, as a nursing coordinator.

## 1982E

**Robert A. Mancini** of Cranston, RI, has been named manager of the Barrington office of Citizens Bank.

## 1982G

**Sister Elizabeth Menard, O.P.**, of Fall River, MA, is the new co-director of the Christian Life Center in Salem, MA.

## 1982

**Michael Dunn** of Winchester, MA, has recently joined the food service division of Morris Alger & Sons, Framingham, MA.

**Margaret Ormond** of Cranston, RI, recently was commissioned an Acts 29 minister, providing service to the youth ministry of the Diocese of Providence.

**A Special Note to P.C. Couples . . .** If both you and your spouse are graduates of Providence College, our computerized fund raising records cannot credit you with a gift made as a couple (Mr. and Mrs.). Loyalty Fund Gifts made in this manner must be divided. The husband and wife will

each be credited with half of the gift. Accordingly, each alumnus will be on the "active" list of their respective classes. We realize it creates an extra step for you, but a separate check for each person would make our record-keeping much easier. Thank you for your consideration.

A SINCERE "THANK YOU" FOR YOUR SUPPORT!

### In Memoriam

Rev. John C. Ells '23  
James E. McGill '25  
Lawrence A. Mori '25  
Rev. John M. Sweeney '25  
John J. Vallone '27  
Rev. John W. Murphy '28  
Leo Dugas, M.D. '29  
Ralph Pullo, Jr. '30  
Stephen J. Ryan '30  
J. Joseph Hanley '31 FAC.  
Elmer H. Chester '36  
Dr. John E. Martin '36  
John S. Tonderys, M.D. '36  
James T. Waldron '37

Joseph M. Berg, '39  
A. Beckman Carlson, D.D.S. '41  
Irving Beranbaum '42M  
Arnold G. Panicucci '42D  
J. Warren Malley '49  
Robert Killian '50  
Raymond F. McHugh, Jr. '52  
James F. Simmons '52  
Edward McCarthy '53  
Angelo G. Rossi '54  
Stephen E. Hickey '64  
Mark A. Creegan '71  
Michael M. Murphy '79

## Marriages

Donald G. Griffin '50  
to Elizabeth Johnson

Andrew S. Charron '70  
to Karen Benoit

Randall Palmer '74  
to Debra Neville

Leonard T. Prisco '74  
to Barbara Schmidt

Ronald H. Davis '75E  
to Dawn Walker

Michael J. Kirby '76  
to Maureen E. Ward

Richard McGeough '76  
to Lisa K. Kindberg

Carol A. O'Donnell '76  
to Bruce Turner

Dr. Joseph N. Petitti '76  
to Dr. Erica A. Nierendorf

Marc R. Rousseau '76  
to Christina G. Holt

Kathleen M. Donoghue '77  
to John F. Lane '78

Linda J. Duerden '77  
to Michael R. Vandal

Donald G. McCabe '77  
to Marcia Sahagian

Gregory T. Wakim '77  
to Elizabeth A. Valcourt

Irene L. Campbell '78  
to Douglas L. Moody

Lynn E. Laws '78  
to James E. Durkin

Robert G. Noble '78  
to Erin E. Keefe

Stephen J. Quish '78  
to Carol A. Carpenter

Alfred R. Saucier '78  
to Janine Hebert

1st Lt. James B. Dalton '79  
to Debra Ridley

Kenneth J. McPhillips '79  
to Patricia Sepe

David G. Thibert '79  
to Mary M. Mannion

Mary C. McTighe '79  
to Steven Prelack

Michael J. Monea '79  
to Evelyn A. Mandis

Mary V. Sharkey '79  
to Hugh Gleason

Colleen A. Sinnot '79  
to Victor Terry

Carl Oberg '79G  
Betsy C. Morris

Arthur W. Brickley, Jr. '80  
to Mary C. Swan

Jane F. Pechulis '80  
to Glenn L. Purple

Marie E. Burt '81  
to Edward J. Cummiskey '80

Lisa A. Condon '81  
to Dan Sullivan '79

Kathleen Coyne '81  
to Mark E. McCoy

Susan E. DeLucia '81  
to Stephen P. Regan '81

Colleen Dougherty '81  
to Gregory Twomey

John Michael Joyce '81  
to Maryann E. Assalone

Kathleen A. O'Neill '81  
to Matthew T. Oliverio '82

Margaret M. Peirson '81  
to Edward G. Hartnett '79

Geraldine M. Rennie '81  
to James T. Chido

Nancy I. Tuttle '81  
to Gary S. Discenza

Janet A. Witkowski '81  
to Paul J. Maloney

Martha A. Conn '82  
to Dennis E. Hultzman

Kathryn A. Grant '82  
to William L. Labbe '81

Barbara J. Slominski '82  
to Thomas J. Daly '82

Grace P. Sullivan '82  
to Charles S. Costello, Jr.

Tracy McCarthy, '82E  
to Mark D. St.Onge '77

## Alumni Nominations continued

College community for distinguished service and dedication to PC.

In addition to the traditional awards, from time to time special awards are granted in the categories of Service to the Church, Exemplary Citizenship, Service to Education and the Faithful Friar Award which is similar to an unsung hero accolade.

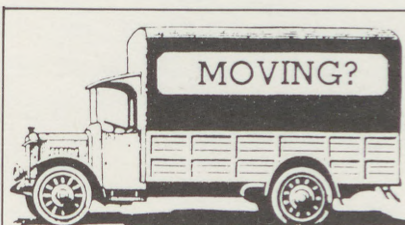
To suggest someone for an award, send a letter to the Alumni Office (attn. Awards Committee) specifying the award you wish the person to be considered for. Include as much information as possible to support your recommendation.

### ALUMNI ASSOCIATION REP. TO THE CORPORATION

The Alumni Association has two representatives serving four-year terms on the College Corporation. The terms are scheduled so that every two years one slot becomes available as of July 1st.

To recommend someone for consideration, send a letter to the Alumni Office (Attn: Corporation Committee) stating why you feel your candidate should be considered. A personal resume of the candidate must be included.

The deadline for accepting nominations for any of the aforementioned programs is April 15th. All correspondence should be directed to the appropriate committee at the Alumni Office, Providence College, Providence, RI 02918.



If so, why not take a minute to tell us where you're going. Your cooperation will help us save postage and will ensure that you receive the magazine promptly.

Please print  
your new address here.

name

address

city

state

zip



*Senior members of the nationally-ranked hockey Friars posed for this group shot during Parents' Weekend, February 11-13. The Friars crushed Brown University, 8-0. (Front row): Mike Bolstad, Bruce Raboin, Hugh Toppazzini, Randy Velischek. (Back row): Steve Anderson, Jim Rushin, Kurt Kleinendorst.*

# PROVIDENCE UPDATE

PROVIDENCE COLLEGE  
PROVIDENCE, R.I. 02918

NON PROFIT ORG.  
U.S. POSTAGE  
PAID  
PROVIDENCE, R.I.  
PERMIT NO. 561