

# Kick-off Dinner Signals Opening of 80-81 Fund

**VOLL '55 HEADS NEW DRIVE TOWARDS RECORD GOAL OF \$650,000**

Providence College's thirty-eighth annual Loyalty Fund is off to one of its best starts ever in the history of the college. Officially opened on

be an inspiring example to us all." Mr. Nero went on to present a gavel to Chairman Gragnani as a symbol of the college's appreciation to him for his leadership and devotion on behalf of alma mater.

The dinner, an overwhelming

success which was attended by over 300 alumni, parents and friends, opened the new Fund with a rousing start. Master of ceremonies, Alumni President Jim O'Connell '42M, offered the complete assistance of **continued on page 2**

# PROVIDENCE

the 18th of October with its Kick-off Dinner, the Fund has already recorded \$176,905 in pledges and \$62,023 received in cash. This compares to \$139,643 in pledges and \$74,747 received in cash at the same time last year.

1979-80 Loyalty Fund Chairman Francis L. Gragnani passed along the leadership gavel to the 1980-81 Fund Chairman, Eugene T. Voll. In his comments at the Kick-off Dinner, Mr. Gragnani stated "We are all indeed very proud of our records and accomplishments in the 1979-80 Fund. Not only did we succeed in topping our overall goal of \$525,000 by \$69,063, but all our committees—alumni, parents, corporations, friends and non-alumni faculty and staff—surpassed their individual quotas. But, as we all know, records are made to be broken and for this reason we are counting on all of you to assist Gene in the 80-81 campaign and set new and greater marks."

William T. Nero, the college's Associate Vice President for Development, praised the work of Chairman Gragnani in his remarks. "Frank and I have worked very closely this year and have gotten to know each other very well. His endless loyalty and leadership proved to



*Providence Mayor Vincent A. Cianci Jr. (left) and R.I. Governor J. Joseph Garrahy flank moderator Harry C. McKenna of WEAN Radio, during a one-hour debate that was held on the college campus on October 21st. Sponsored by the Rhode Island Press Club, the debate was the only such confrontation of the two gubernatorial candidates during a long and often bitter campaign.*



*Firing questions at the gubernatorial candidates were (l. to r.) panelists C. Charles Bakst, political staff writer for the Providence Journal-Bulletin; Doug White, Channel 10; Walter Cryan, Channel 12; Magee Hickey, Channel 6; and Sue Kinsman, United Press International.*

# UPDATE

## LOYALTY FUND continued

the Alumni Board of Governors and urged everyone in attendance to be as active as possible.

Chairman Gragnani presented the following awards for exceptional achievement in the 79-80 Loyalty Fund:

**Very Reverend Vincent C. Dore, O.P., '23** — For leading the Class of 1923 to the highest alumni class participation - 100%.

**Anthony DeNicola and Leo Hafey '30** — For leading the Class of 1930 to the greatest improvement in percentage of class participation over the preceding year - from 62% to 82%, or an increase in percentage of participation of 20%.

**Ferdinand B. Sowa, '48** — For leading New Bedford to the highest regional percentage of participation — 65%.

**John V. Scholan, M.D. '56** — For leading the Vermont Region to the highest increase in regional participation over the preceding year from 35% to 48%, or an increase of 13%.

**Francis E. Carey '55** — For leading the Class of 1955 to the highest total contributed - \$29,571 - to the 79-80 Loyalty Fund or any previous Loyalty Fund.

**David N. Webster '55 and Peter R. McCarthy '60** — For leading the Washington, D.C. Alumni Club to the highest dollar percentage increase outside of Rhode Island - from \$21,278 to \$32,458, or a 53% increase.

Chairman Voll declared in his remarks "Our goal of \$650,000, the most ambitious in the college's history, is a challenge that Anthony Sion, my Associate General Chairman, and myself believe is absolutely necessary if P.C. is to continue to offer the kind of quality value-centered education that has become its trademark. In order to do this, the participation of the entire alumni body is needed." Mr. Voll went on to offer a challenge to all alumni to offer their support and become a member of The Providence College team.

College President, The Very Reverend Thomas R. Peterson, O.P.,



*William T. Nero (left) Associate Vice President for Development, presents Francis L. Gragnani, last year's Loyalty Fund Chairman, with the gavel in appreciation for his tremendous leadership.*

was the last speaker in the evening's program. Father Peterson opened by praising the work of 79-80 Fund Chairman Frank Gragnani and past Alumni President Bob Finneran. "I must commend the work of our 1979-80 Fund Chairman Frank Gragnani along with our Alumni President Bob Finneran. Frank provided the leadership which was essential to the Fund's success. Bob,

along with Bill Nero and myself, put in many long hours on the road this past year. To Frank, Bob and Bill, the college owes a very special debt which can never be adequately expressed in words."

Father went on to speak on what he called "the Challenges of the Eighties." "We've started construction on a new building, a  
continued on page 4



*1980-81 Loyalty Fund Decade Chairpersons are (l. to r.): John E. Martinelli, Esq. '65; Bernard J. Buonanno, '32; Henry T. Kaveny, '27; Susan McCutchan, '75; Stephen A. Fanning, Esq., '50; and Wallace R. Tasca, '40.*

---

**FACULTY NOTES**


---

Assistant Professor of Business, **Natalie R. Seigle**, recently published "Shopping Around in China," in STORES, the periodical of the NRMA. Professor Seigle also delivered a paper on "Retailing in China" at the semi-annual conference of the American Collegiate Retail Association in Chicago.

**Phyllis Roark**, Special Lecturer in Business Administration, and Project Director for the "Mideast Forum 4" of the World Affairs Council of Rhode Island has announced that **Zygmunt J. Friedemann, Ph.D.** and **Susan H. Marsh, Ph.D.**, both of the Political Science Department will participate in this program held at Brown University.

**Dr. James Belliveau** of the Chemistry Department will present "Pros and Cons of Research at the Undergraduate Level," at the Sixty-Ninth Conference of the Committee on Chemistry in the Two Year Colleges, held at the Community College of Rhode Island, during November.

An exhibition of black and white photographs on EGYPT has been presented by **R. Newell Elkington**, Associate Professor and Chairman of the Art Department. A lecture entitled "Imperial Art Under Ramesses" by **Mrs. Nancy Garner**, instructor of Art History, was held in conjunction with the opening of the exhibition held in the campus gallery.

**Ellen P. Salvatore**, Assistant Professor of Social Work, recently completed requirements for her doctorate in sociology at Brown University. Her dissertation — "*Social Work in Primary Care: Opportun-*

---

*Kaori Matsui, an exchange student from Kansai University of Foreign Studies in Osaka, Japan, tours the PC campus with the Very Rev. Thomas R. Peterson, O.P., president. Kaori is enrolled in four courses this semester, including Concepts of Fiction and Far East Modern History. Two PC coeds are presently studying at Kansai University as part of the one-year direct exchange program.*

---

*ities and Obstacles*" analyzes the social structure and social interactional factors influencing the role definition of social workers in medical and pediatric primary health care settings.

**Dr. Hugh Lena**, Associate Professor of Sociology, has authored the following publications: *Test Items for Sociology: Human Society*, third edition, published by Scott, Foresman and Company, and "Health Care Delivery" Chapter 9 in *Social Problems in America*, published by Houghton Mifflin Co.

**William Phillips**, Personnel/Vocational Counselor for the PC Counseling Center, has been appointed higher education representative to the executive committee of the RI Personnel and Guidance Association. He has also been appointed to the program committee of the 1982 National Convention of the National Association of Student Personnel Administrators. Mr. Phillips' article - "Assertiveness Training and Support for Students in the Medical

Health Fields" has been accepted for publication by the *Journal of College Student Personnel*. He has also devised a program entitled "Counseling Center Outreach: Utilizing Residence Hall Staff in the Identification, Intervention, and Referral of the Suicidal Student," which has been accepted for presentation at the National Convention of the American College Student Personnel Association to be held in March, 1981, in Cincinnati, Ohio.

For the third time, **Dr. Charlotte O'Kelly**, of the Sociology Department will participate as a visiting humanist in the National Endowment for the Arts and Humanities Program held by Trinity Square Repertory Company. Dr. O'Kelly will lead an after-theatre discussion of the theatre's production of the play "On Golden Pond" in December. Dr. O'Kelly has also been selected for inclusion in the 1981 edition of "*Who's Who in the East*." "Compulsory Education, Child  
continued on page 4



## FACULTY NOTES continued

Labor, and the Working Class Woman," authored by Dr. O'Kelly, has been accepted for presentation at the American Educational Research meetings; Research on Women, in December in Pacific Grove, California.

**Michael J. McLaughlin**, Associate Professor of Education, conducted a workshop at the RI Educational Association Annual Conference on October 31, 1980, entitled "Schools and Public Relations." The workshop was part of the NEARI Annual Teachers Institute held at Rhode Island College.

The John F. Kennedy Library has accepted a dissertation on Ernest Hemingway written by **Roger L. Pearson, Ph.D.**, Dean of the School of Continuing Education, as part of the Hemingway Room Collection. Also, Pearson was among ten people recently inducted into the University of Rhode Island Hall of Fame.

## LOYALTY FUND continued

sorely-needed Fieldhouse. This is one of the challenges which we have met head-on and overcome. Alumni Hall was built in a time when we had 900 students and were an all-male college. Last year, over 2800 students participated in both men and women's intramural sports. We're also studying the feasibility of constructing a theatre along with a Dominican Faculty house, which has always been my dream."

"The show of support which we've received from our Alumni, Parents and Friends, has been tremendous. As we look down the road and into the eighties, we realize how fortunate we are indeed, to be able to count on our family and look to them for support."

The annual campaign now moves into its special gifts phase for the months of November and December, in which alumni and other prospective donors will be called and encouraged to participate in either the Chapin Incorporators (\$5,000), Chapin Associates (\$2,000), President's Club (\$1,000), Chancellor's Club (\$500), Dean's Club (\$250),

At a recent meeting of the first International Congress of Latin-American Literary Magazines held at the Universidad Veracruzana, Mexico, *Inti*, a literary journal edited by **Roger G. Carmosino**, Instructor of Spanish, became a founding member of the first coordinating Center of Latin American Literary Magazines. Along with other prestigious and well-established Latin American Journals, "El Dia," one of the leading newspapers in Mexico, will carry a special presentation and review of *Inti*, which has been recognized as a young journal already having made a significant contribution to the field of Hispanic Letters. Mr. Carmosino has been invited to attend the second International Congress of the Coordinating Center, scheduled to meet in the Fall of 1981, in Caracas, Venezuela. A special double issue of *Inti*, will be published this month.

**Dr. Josephine A. Ruggiero**, Associate Professor of Sociology, was

recently chosen as an Outstanding Young Woman of America in recognition of her achievements and activities. This past summer, Dr. Ruggiero participated in an eight-week seminar on "Karl Marx as a Social Theorist," held at the University of Southern California, made possible by a grant from the National Endowment for the Humanities. Dr. Ruggiero is currently on sabbatical, working on a longitudinal analysis of a sample of college-educated women who were first studied when they were college seniors, and will be studied again ten years after graduation. The research focuses on the effects of career choice on the life paths and life styles of these women.

**Dr. Alfredo C. Incera**, Associate Professor of Spanish, recently authored a new Spanish textbook entitled "*Compendio de la Civilizacion Espanola e Iberoamericana*". The material reviews the structure, continued on page 5

and Century Club (\$100) gift plans. Separate phonathon committees have already been established for each of these committees as well as for the Golden Anniversary Class of 1931 and for the Silver Anniversary Class of 1956.

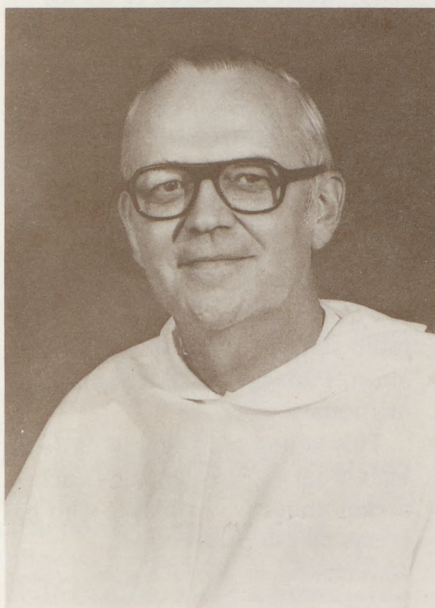
The Divisional and Special Gifts Chairmen for this year's fund have already been announced in the most

recent issue of *Update*. Heading up the solicitation for the Golden and Silver Anniversary Classes are George A. Kenny '31, and Paul J. Fournier '56 and Arthur O. Aloisio '56. In advance and special gifts this year, the college hopes to realize a minimum of \$350,000 towards the Fund's overall goal of \$650,000.



*Eugene T. Voll, '55, General Chairman of the 1980-81 Loyalty Fund.*

**RICHARD D. DANILOWICZ**  
1921 - 1980



The Rev. Richard D. Danilowicz, O.P., Associate Professor of Philosophy at Providence College, died September 28 in Providence. He was 58.

Born in Johnston, RI, a son of Mary (Kordalewski) Danilowicz and the late Paul J. Danilowicz, Father Danilowicz was graduated from LaSalle Academy in 1939 and received his Bachelor of Arts degree in Philosophy from PC in 1943. He was solemnly professed at St. Joseph's Priory, Somerset, Ohio, in 1947 and was ordained a priest in the Order of Friar Preachers in St. Dominic's Church, Washington, D.C. on June 10, 1950.

In 1951, Father Dan was assigned to teach in the Philosophy and Education Departments at PC, and the following year he was awarded a Master of Arts degree from the Catholic University of America.

He served as Director of Public Information at the college from 1955-1964 and as Alumni Chaplain from 1956-1971. From 1957-1973, he served as Dean of the School of Continuing Education (formerly the School of Adult Education) and from 1965-1973, Father Dan was Director of the Summer School.

During his career as priest-educator, Father Dan was active in many professional organizations, including the state Mathematics and Science



**RODDY FOUNDATION** — Providence College recently hosted a reception for the Board of Directors of the Fred M. Roddy Foundation, Inc., a scholarship program which was established in 1977 to aid PC students who intend to pursue a career in medicine. The Board of Directors voted to double their grant by contributing \$20,000 per year for five years commencing in 1981.

Pictured above are members of the Roddy Board of Directors and PC recipients. They are (l. to r.): John W. McIntyre, President of the Foundation; John F. Mullaney, '82; Laura A. Murphy '82; Walter P. McGinn, '82; Gregory J. Laureau '82; Charles E. Gleadow, Jr., Treasurer; Corinne M. Silva '82; Edmund F. Henry, Secretary; Very Rev. Thomas R. Peterson, O.P., college president; Lee Kintzel, Foundation Board member; and Richard B. Lafleur, Assistant Vice President, RI Hospital Trust National Bank.

Scholarship Commission, which was formed in 1958 to encourage science study. He was a member of both the Providence Adult Education Commission and the Association of University Evening Colleges. He also served on a special commission to study the Church's educational mission in the Roman Catholic Diocese of Providence, and was an honorary member of the Catholic Philosophical Society.,

Besides his mother, he is survived by a brother, Robert T. Danilowicz of Scituate, RI and an aunt, Eleanor Kordalewski of Johnston, RI.

**CORRECTION**

On the "How We Compare" page of the 1979-80 Loyalty Fund Final Report, the figures attributed to Manhattan College are in error and should read: Amount raised for 78-79 \$351,840.

**FACULTY NOTES continued**

unity and cultural diversity of the various nations which integrate the Spanish community beginning with Spain, the mother-land, whence is derived the language of the Ibero-American world. The text is presently being printed in Barcelona, Spain.

"From Espionage to Eschatology: Anthony Burgess's *Tremor of Intent*," authored by **Charles F. Duffy**, Associate Professor of English, and chairman of the department is being published by *Renascence* (Winter, 1980).

**Edgar C. Bailey, Jr.**, Assistant Director of the Library, has published an article entitled "Shadows in Earthsea: LeGuin's Use of A Jungian Archetype" in the Fall, 1980 issue of *Extrapolation*, a journal of science fiction and fantasy criticism.

# SIDELINE CHATTER

## JIM PANAGGIO . . . A UNIQUE BREED

by Dave Lafrennie '82

*A secretary said: "Every mother in Providence would love their daughter to go out with Jim." His coach describes him as "a kid that every parent would love their son to grow up and become." Yet he's much like Gale Sayers, who said: "God is first, my family is second and I'm third."*

Jim Panaggio is a junior transfer from Dartmouth College who gave up the Ivy League to help in the resurrection of Providence College's basketball program as well as a more spiritual education.

This young man is unique. Not only is he a capable guard, a sound defensive player and a good ball handler, he's a born again Christian. God is first and basketball is second in his life.

This past summer Panaggio had the opportunity to combine his faith with his favorite sport when he toured three Latin and South American countries as a member of the Sports Ambassadors, a Christian missionary group much like Athletes in Action. "It was the best experience of my life," Panaggio said.

The 6-3 Dean's List student spent six weeks with the team in Panama, Chile and Columbia. At halftime of each game, the players would give testimony of their faith. "It wasn't the greatest brand of basketball, but it was what I needed to get my 'game' legs back," he said. While accumulating the most minutes of any player, Jim helped the club compile a 28-4 record.

In order to make the trip, each player was required to raise nearly \$3,000. The ambitious Panaggio organized a jog-a-thon in his home town of Brockport, NY, which netted him \$700. He also ran other promotional activities and solicited various churches. The likeable junior enjoyed himself so much he's



already looking forward to next summer when the club travels to Spain, Portugal and Greece.

After leading the entire Ivy League two years ago in minutes played, Jim spent last year on the PC bench, waiting to become eligible. "It was tough going from 37½ minutes to none, but I made it through the year. It was frustrating to sit on the bench and not be able to help," he says. "But now I'm ready. I don't know where, or how, I'll fit in, but I'll do anything to help us win."

Coach Gary Walters, who knows Panaggio better than anyone else at PC after coaching him at Dartmouth, says: "It's a pleasure to have him around. He's a disciplined, unselfish, conscientious and an enormously hard worker." Walters expects Panaggio to play right away and provide immediate help.

The modest "model student-athlete," as he's referred to by his coach, says "I'm nothing spectacular, but I think I can provide some leadership. It won't crush me if I don't start or play a lot, I'll adjust to any role."

Besides playing basketball and keeping up with his studies, Jim is also a member of a prayer group on campus and moderates a contemporary Christian program on the PC radio station, WDOM. Upon graduation, Panaggio is contemplating missionary work.

This young man simply has class. He's what most collegiate coaches dream about . . . a player who has everything in perspective.

*David Lafrennie is a junior at Providence College, and has served as an Editorial Assistant in the Sports Information Office for the past two years. A native of Holyoke, Mass., he has written for the Springfield News, Springfield, Mass.*



---

## ALUMNI NEWS

---

Homecoming 1981 is scheduled for the weekend of February 13, 14 and 15 and plans have already been announced by chairman Aaron J. Slom M'42 and his committee which includes, Cynthia Altieri '76, Howard Kenny D'42, Jann Amoroso '75 and Dr. Dominic Schioppo '58.

A special Homecoming Reservation Form is being prepared for a mailing to all Alumni on active status. However, here are the basic details as they currently stand:

### Friday - February 13th

Choice of 2 events

- Alumni Semi-Formal Dinner and Dance at Raymond Hall . . . a complete prime-rib of beef dinner followed by dancing to the tunes of the Drew-Corcoran Orchestra.
- P.C. Theatre Arts performance in Harkins Auditorium, option to join the after dinner dancing at Raymond Hall.

### Saturday - February 14th

- P.C. vs Villanova in Basketball at the Providence Civic Center—2 p.m.
- Post-Game Party in Slavin Center from 4:30 - 7 p.m. with live entertainment featuring Leo Connerton.
- Supper and St. Patty's Party at Raymond Hall from 7 p.m. to midnight with live entertainment by Andy Healy and the Country Roads.
- P.C. Theatre Arts Performance also scheduled that evening.

### Sunday - February 15th

- Alumni Memorial Mass on campus at 11:30 a.m.
- Champagne Brunch at Raymond Hall 12:30 p.m.
- P.C. vs B.U. in Hockey at Schneider Arena - exact time to be announced.

The Homecoming reservation form will include further details including the price of each event which can be purchased separately. Group hotel rates will be available at the Holiday Inn, the Biltmore and the Marriott Hotels in Providence.

Make plans now to "come home" to Alma Mater on February 13, 14 and 15th . . . the committee is predicting the biggest Homecoming crowd in P.C. history . . . don't miss it!

---



---

## AREA ALUMNI CLUBS TO COMPETE IN TOURNAMENT

---

The local alumni clubs of Cornell, Harvard, Notre Dame, Brown, Holy Cross, and Providence College (the Mal Brown Chapter) are competing in the 1st Annual Alumni Cup Volleyball Tournament on December 5 at 7:30 p.m. in Alumni Hall. This is a fund-raiser for the schools' scholarship programs. Each school is selling tickets on a liquor basket which will be raffled off at the tournament. The team that wins first place will receive 20% of the raffle ticket receipts and the 5 other schools will split the rest. Tickets for the raffle are \$1.00 each or a book of 5 for \$4.00 and can be obtained by calling 865-2414. They will also be on sale at the Mal Brown Basketball Preview and through the mail. Purchase of a raffle ticket will also serve as admission to the December 5 game. Come see alumni, faculty and staff in volleyball action on Friday December 5th!

---

## DIRECTORY QUESTIONNAIRES TO BE MAILED

---

Work on the Alumni Directory is well under way. Soon all alumni will receive a brief questionnaire with a follow-up request to be sent one month later. The prompt return of-

these questionnaires is essential so that the information in the directory will be current and complete. The completed questionnaires as well as a list of all alumni who do not respond to either mailing will be turned over to the publisher for telephone follow up.

All alumni will be contacted directly by the Harris Publishing Company to verify information and to see whether they wish to purchase a directory. Purchase of a directory is strictly optional and does not constitute a donation to PC. The directory is financed by the publisher solely through the sales of copies to alumni. There is no profit or expense to the College or the Alumni Association. Alumni who don't respond to the questionnaires and are not reached by phone by the Harris representatives will appear in the directory with the information currently held in alumni records.

Alumni will be listed alphabetically, geographically, and by class year. Each listing will contain name, degree(s), residence and phone number, and business or professional information.

If you don't receive your questionnaire by January 15 or if you don't wish to be listed in the directory, please notify the Alumni Office by mail before February 1.

---

## IN MEMORIAM

---

James A. Flaherty '28  
 Rev. Thomas T. Shea, O.P. '32  
 James P. Cannon '33  
 Edward J. Keegan '34  
 Laurence J. Walsh '37  
 Judge John F. Doris '37  
 Aram P. Jarrett '38  
 Anthony J. D'Ambrosio '38  
 Joseph E. Radican '38  
 Francis J. King '39  
 Raymond J. Bedard '39  
 George J. Finn, Jr. '41  
 Rev. Richard D. Danilowicz, O.P. '43  
 John F. Favicchio '48  
 Richard L. Fogarty '56  
 Stephen F. Fellows '74  
 William McKeon '79

---



## Dates to Remember . . .

Special Gift Phonathons, Nov. 19, 20, 25; Dec. 1-4  
 Thanksgiving Recess, Nov. 25-30  
 PC Theatre; "She Stoops To Conquer", Dec. 3-7  
 Alumni Trip to Aruba, Dec. 13-20; Jan. 3-10  
 Christmas Recess, Dec. 19-Jan. 12  
 Parent's Weekend, Feb. 6-8  
 Homecoming Weekend, Feb. 13-15

## PROVIDENCE UPDATE

Is a publication of the  
 Office of Public Information  
 Ann M. Manchester, *Director*  
 Daniel P. Foster, *Assistant Director*  
 and the Alumni Office,  
 Joseph Brum, *Director*  
 Providence College.  
 Peter Crowley, *Photographer*

# PROVIDENCE UPDATE

NON PROFIT ORG.  
 U.S. POSTAGE  
**PAID**  
 PROVIDENCE, R.I.  
 PERMIT NO. 561