

QUIRK INSTITUTE EMERGES AS NEW ENGLAND'S LEADING LABOR RELATIONS FORUM

The Quirk Institute of Industrial Relations, in just five short years, has emerged as the leading labor-management forum in the Northeast. And there are aspirations to make a mark nationally. The

continuous support, the Institute could not have come so far in such a short span of time."

"John has attracted speakers to the Providence College campus that other institutions of higher education — with far greater resources — have been unable to even get a serious hearing with." The NLRB Chairman has arranged

souls for people of this calibre," added O'Brien. "John has enabled us to bring these federal officials to Rhode Island and allow local leaders in management and labor to talk on a one-to-one basis with the most powerful federal authorities. That would not be possible for a small liberal arts college without the active participation of John Fanning."

PROVIDENCE

reasons for success are tied directly to personalities.

Of Professor Francis T. O'Brien, the Institute's Director, the following assessment was made by the Chairman of the National Labor Relations Board, John H. Fanning, "Frank has made a major contribution to the promotion of understanding among labor leaders and management executives throughout New England and, in particular, within Rhode Island."

"His conferences not only involve federal officials but local labor relations experts who are the people sitting at the bargaining table each day. It is their actions that determine whether collective bargaining will succeed or whether the state's economy will be damaged by strikes that benefit no one," continued Chairman Fanning, who is a 1938 Providence College graduate.

When Professor O'Brien, who is also a member of the Economics Department, assesses the success of the Quirk Institute he is quick to credit others, especially John Fanning.

"John has become a very close friend and confidant in recent years," observed O'Brien. "Without his personal intervention and



John H. Fanning '38

for the premier speakers in the labor relations field, such as the Director of the Council on Wage and Price Stability and the National Director of the Federal Mediation and Conciliation Service. "These are the decision makers in Washington who influence the conduct of negotiations from the largest multinational corporation to the smallest jewelry shop."

"Other directors of labor-management centers would sell their

The NLRB Chairman, a Pawtucket, R.I. native, is the only person who has ever been appointed to five terms on the Board and who has served under seven Presidents. He was the first Board member to be appointed by Presidents of both parties. During his 20-year tenure, he has signed more than 20,000 decisions. By the time his current term is completed in 1982, he will have served on the board for more than half of its life. The NLRB was established in 1935.

The Institute's objective is to serve "as a neutral forum within which labor and management can meet and discuss those issues which affect the collective bargaining process." It is through intensive one-day conferences that O'Brien attempts to attain his goal of fostering understanding among labor and management leaders. "These conferences provide a vital opportunity for a free and open exchange of ideas, opinions and positions in a relaxed setting that is in contrast to the combative atmosphere in a bargaining session," explained the veteran faculty member. Among the topics covered in past conferences have been the impact of President Carter's wage guidelines on negotiations; the unique federal regulations that govern labor relations in the health care industry; the impact of pension reform laws; the emergence of the labor-management-government alliance to

UPDATE



Prof. Francis T. O'Brien

promote economic development, and laws affecting collective bargaining for state and municipal employees.

What do outsiders — those who are not connected with Providence College — have to say about the Quirk Institute?

Martin T. Byrne, one of the state's most powerful and respected labor leaders who is President of the Providence Central Federated Labor Council, declared, "Frank O'Brien's conferences serve a vital function. They allow labor and management to get together and listen to each others problems. Through this we become more sympathetic and better able to promote industrial peace."

Romeo A. Calderone, Director of Labor for the State of Rhode Island, commented, "The Quirk Institute is the only forum in Rhode Island that continues to educate government, management and labor in both the public and private sectors. The knowledge and experience one gains at these conferences is invaluable in the day-to-day business of labor relations."

Indicative of the growing stature enjoyed by both the Institute and its director, is the fact that Professor O'Brien is under increasing demand as an advisor and independent authority.

A member of the National Panel of the American Arbitration

Association, he has been called upon by Governor Garrahy of Rhode Island to mediate labor disputes. For example, this past spring school bus service to six Rhode Island communities was disrupted when drivers walked off the job in a dispute over an union-recognition election. The three-member panel, which successfully mediated the disagreement, was comprised of former Rhode Island Governor Frank Litch, Thomas H. Bride, former director of the state Department of Employment Security, and Francis T. O'Brien of Providence College.

Earlier this summer, the United Food and Commercial Workers asked O'Brien to serve as an "election umpire" in a sensitive vote involving a new contract with two major New England food store chains. He supervised a mail ballot for 3,800 union members who were asked to accept or reject management's "final offer."

As a member of the American Arbitration Association he is under constant demand to hand down decisions on grievances affecting hundreds of employees in both the public and private sectors.

FOUR-YEAR AGREEMENTS SIGNED FOR TV, RADIO COVERAGE OF BASKETBALL

Providence College has signed contracts with WPRI-TV and WEAN radio to broadcast the college's basketball games for the next four years.

WPRI-TV, which was purchased in April, 1978 by Knight-Ridder Newspapers, will broadcast between six and 12 games per season during the four-year agreement. How many games and which ones on the schedule that will be aired will be negotiated each year between the station and the college. WPRI-TV, an ABC affiliate, needed flexibility in scheduling to accommodate the network's broadcasting of the 1980 Winter Olympics.

WEAN, a station with an all-news format, will broadcast all of the college's games during the next four

seasons. Through an agreement with John F. Crohan, president of New England Radio Network, WEAN will offer the games to the stations within the network. The new network, which continues to add radio outlets, stretches from Westerly, R.I. to Hyannis, Mass.

The total value of WPRI's contract, including rights fees and promotional messages about the college's academic, cultural and athletic programs, is in excess of \$300,000, which is four times greater than an offer made by any other station. This figure does not include the value of half-time programs during all televised games or the production services provided by WPRI-TV.

WEAN's contract is valued at more than \$140,000, which is almost three times the offers made by any other radio station. This figure does not include the value of broadcasting the games over the New England Radio Network, that covers an area from which the college draws 60% of its undergraduate applicants.

Commenting on the agreements, the Very Reverend Thomas R. Peterson, O.P., college president, said, "We are pleased with the commitments made to Providence College by WPRI-TV and WEAN. Their generous and good faith offers will enhance our opportunity not only for serving the community but also to be of further assistance to our students."

"Our decision to accept these offers is in the interest of the entire college community," Father Peterson added. "Under both agreements we will have access to radio and television time that will enable us to inform the public about our academic programs and other college activities."

"The signing culminates months of discussions among college officials, management representatives of various stations and individuals with a personal interest in this matter," remarked Father Peterson.

"Before making our decision we made a special effort to discuss the

matter in detail with persons who have a direct interest.

"We were particularly concerned about our relationship with Chris Clark," continued Father Peterson. "We have had a close and warm association. However, to accept any other station's offer would not have been in the best interest of our institution."

COUNSELING CENTER ENJOYS A MOST PRODUCTIVE YEAR

A total of 2247 students, seeking information and counseling on a wide variety of personal, vocational and employment placement concerns visited the college's Counseling and Career Planning Center during the 1978-79 academic year. That this large a percentage of Providence's student population would request assistance is an indication of why Counseling Center Director Jacqueline Kiernan recently told Alumni Board members that this past year "was an industrious and productive one . . . more students, faculty, and company recruiters made use of the Center than ever before." The volume of needs serviced also confirmed plans to increase the present Counseling Center's professional staff of three persons by two additional staff members — a personal/vocational counselor and a placement counselor — for this academic year.

Why this surge of student interest in the services offered by the Counseling Center? "Historically, placement services have focused on aiding seniors in securing positions upon their graduation from college," explained Miss Kiernan. "Students, therefore, did not usually make use of college career services until well into their senior year. However, this approach to job placement for college students has changed drastically in recent years. Heavy pressures of the job market demand that students begin to explore early in their academic careers their special interests and abilities in order to develop a number of career options."

Of the nearly 2250 students seen

by Providence's counselors, more than half of those sought assistance or information regarding employment placement. One hundred and nineteen local, national and international companies held recruitment sessions on the Providence College campus, an increase of 44 companies over last year's recruitment schedule. Among those firms who hired Providence College students this year are: Pratt & Whitney (Aircraft and Scientific divisions), National Cash Register, Peat, Marwick, Mitchell & Company, Arthur Young & Company, Ernst & Ernst, Price Waterhouse & Company, Chase Manhattan Bank, Industrial National Bank, Rhode Island Hospital Trust National Bank, Procter & Gamble, Otis Engineering and Anheuser-Busch Inc.

Another feature of the placement operations of the Center are workshops designed to meet the career-search needs of students. Sessions in "Resume Writing," "Interview Techniques," "Special Problems of Women in the Work Force," and "Career Planning for Liberal Arts Majors," were some of the topics considered.

Working closely with Providence's Alumni Office, the Counseling and Career Planning Center has begun to develop a directory of alumni able to provide information or on-site job exposure for interested students. Future plans call for making this listing more comprehensive and for re-developing the "Operation Career Search" program that provided alumni the opportunity to speak to students on campus about various occupations. The annual Career Fair, a joint venture of the Counseling Center, Alumni Office and Student Congress, again received wide exposure on campus this year and promises to be an appropriate "kick-off" for the coordinated events sponsored during October's "Career Month Program" in future years.

Remedial services and personal counseling for students experiencing emotional difficulties also occupied

the Counseling Center staff this year. "The College's Counseling and Career Planning Center is developmentally oriented — concerned with the total growth of the student from the beginning of the freshman year to the senior year," noted Miss Kiernan. "Personal counseling, vocational counseling, and placement services are areas of concern that are not mutually exclusive from each other. Often an inability to decide upon a major can cause a student a great deal of anxiety and on the same note, personal problems such as family pressure, affect a student's ability to make positive career choices."

A wide variety of services exist at or through the Counseling Center to assist students in coping with emotional difficulties that arise. Students with "coping problems" (as opposed to serious pathology) saw college counselors for short-term, individual counseling sessions. More serious cases were referred to appropriate off-campus mental health centers or private psychiatrists and psychologists that the Counseling Center has carefully screened and selected.

Finally, the Counseling Center works in close cooperation with various other college offices, particularly the Residence, Chaplain, Dean, Student Affairs, Infirmary, and Admissions Offices to provide numerous services. A Student-Faculty Family Day, "Dealing with Stress" workshop, "Rape Awareness" seminar, Resident Assistant Orientation Program, and Freshmen Summer Orientation Program were among the events sponsored as a result of this cooperation. The Counseling Center also played a prominent role in assisting all members of the college community as they approached the first anniversary of the tragic Aquinas Hall fire. These factors clearly indicate that the Counseling Center's staff, competent and committed, expect to continue meeting the needs of Providence's growing college family with sensitivity and success.

61st Commencement: Maestro's Legacy of Joy

Formal public ceremonies afford us that rare opportunity to witness events that become cherished personal memories. Providence College's 61st Commencement was such an occasion. Overshadowing the well organized and meticulously planned ceremonies of the three-hour Commencement program was a brief but extraordinary moment.

As soon as the crowd — 10,000 strong — caught a glimpse of the regal white mane of the gentleman stepping onto the stage, a spontaneous ovation erupted. Standing on the stage, one could sense the love, joy and respect in the cheers that continued to swell as the gentleman bowed to the audience.

The memory of that moment is all the more poignant for us because it was the last public appearance of the Maestro Arthur Fiedler, who passed away three weeks later at the age of 84.

As Father Stuart McPhail, O.P., Director of Special Events, escorted the Maestro to center stage, the college's orchestra struck up "Stars and Stripes Forever", his traditional closing encore with the Boston Pops. The audience, already standing and cheering, clapped in syncopation with the tune. As one

Dominican Father, who has witnessed many Commencements, remarked, "If we hadn't asked the orchestra to stop, I think people would have been cheering until they turned off the lights in the Civic Center and I am not too sure that would have stopped it." As far back as anyone can remember, it was the most enthusiastic and rousing welcome that a Commencement audience ever accorded an honorary degree recipient.

Despite all the public stories about the Maestro's temper and headstrong manner, no one could ask such a dignitary to be more gracious and pleasant. He and his wife Ellen sat in a private office and conference room, awaiting the conferring of the honorary degrees, and chatted, discussing such diverse topics as network TV interviews, the significance of honorary degrees and acoustics of the Providence Civic Center. Whenever he was asked for "just one more official photograph", the Maestro straightened his academic robe and smiled at the camera.

But perhaps one Providence College group got the most out of Mr. Fiedler's presence at Commencement. Upon arriving at

the Civic Center and being driven directly into the building's backstage area, the Maestro paused after leaving the limousine on his way to the private office. He could hear "Pomp and Circumstance" echoing through the large hall as the graduates filed into their seats. Turning to a college official, he asked, "Whose recording is that?" When told that it was the college orchestra playing, he nodded reflectively and said, "They are very good. Please tell the conductor." John Swoboda of the Music Program faculty and the orchestra's conductor, as well as the student musicians, could not have received a higher compliment.

RESURGENCE OF ROTC, SCHOLAR - ATHLETES HIGHLIGHT CLASS OF '79

To aid the news media in its coverage of Providence College's Commencement, a lengthy press packet is created that gives some interesting insights into the graduating class.

Contained in the statistically-laden report is the fact the ROTC program is undergoing something of a resurgence as years put distance between America's youth and the tragedy of Vietnam. Four years ago there were six Military Science graduates. In contrast, the Class of 1979 had 15 members who received commissions as second lieutenants in the U. S. Army.

Another aspect about the class of 1979 that was pointed out to the press was the significant number of scholar-athletes. For example, Peter D. Roman, Captain of the soccer team and a Summa Cum Laude graduate, will attend the Medical College of Wisconsin. Peter was the recipient of the Kreiger Award presented by the Alumni Association to the varsity athletic captain with the highest academic record.

But no group of athletes distinguished itself more in the classroom than the five members of the college's nationally-recognized



Maestro Fiedler and RI Governor, J. Joseph Garrahy

hockey squad. You always have scholar-athletes in any class. But rarely does one find that the outstanding seniors from one team are all exceptional students. As Coach Lou Lamoriello remarked, "These kids are very sensible in planning their careers. They realize the value of an education and are realistic about professional hockey. The percentage of college stars who play pro hockey is very low. These kids have readied themselves to go out into the world and face reality."

James Korn, a Tri-Captain and an honors graduate, faced a dilemma. He had been offered a place on the U. S. Olympic Team as well as a contract with the Detroit Red Wings. The contract contains a provision which will allow him to attend law school while playing for the Red Wings.

Thomas Bauer, a Dean's List student and Tri-Captain, has turned down a pro contract offer with the Philadelphia Flyers in order to join the nation's largest accounting firm, Peat, Marwick and Mitchell.

Colin Ahern, a Dean's List student and Tri-Captain, has signed a contract with the Detroit Red Wings. He majored in Business Management. Ironically, Colin briefly left the team and PC in his freshman year because of the dual pressures of the academic workload and playing on a premier hockey team. He was back two days later after some long talks with Coach Lamoriello.

William Milner, a Dean's List student and the Friars' outstanding goaltender, has signed a contract with the Red Wings. In planning his career, he voluntarily attended summer school to attain a double major. He graduated with concentrations in both Business Management and Business Accounting.

Randy Wilson is also a Dean's List student and is following in the footsteps of his brother Ron, who played for PC and is now in the NHL. Randy signed a contract with the Red Wings. Like Bill Milner, he pursued a double major during the summer months and graduated with



majors in Business Management and Health Services Administration.

Looking at the entire 1,128-member class, it represents the largest in the college's history. The college conferred 826 undergraduate degrees, 207 on the graduate level and 95 through the School of Continuing Education. In all, 198 undergraduates received their degrees with honors, which is 24% of the class. Of the 826 undergraduates, 346 were women, or 42%.

The Class of 1979 continued to display a trend among graduates of the last few years who are drawn to career-oriented concentrations. The most popular concentration among undergraduates was business, which offers degrees in accounting, management, finance and marketing.

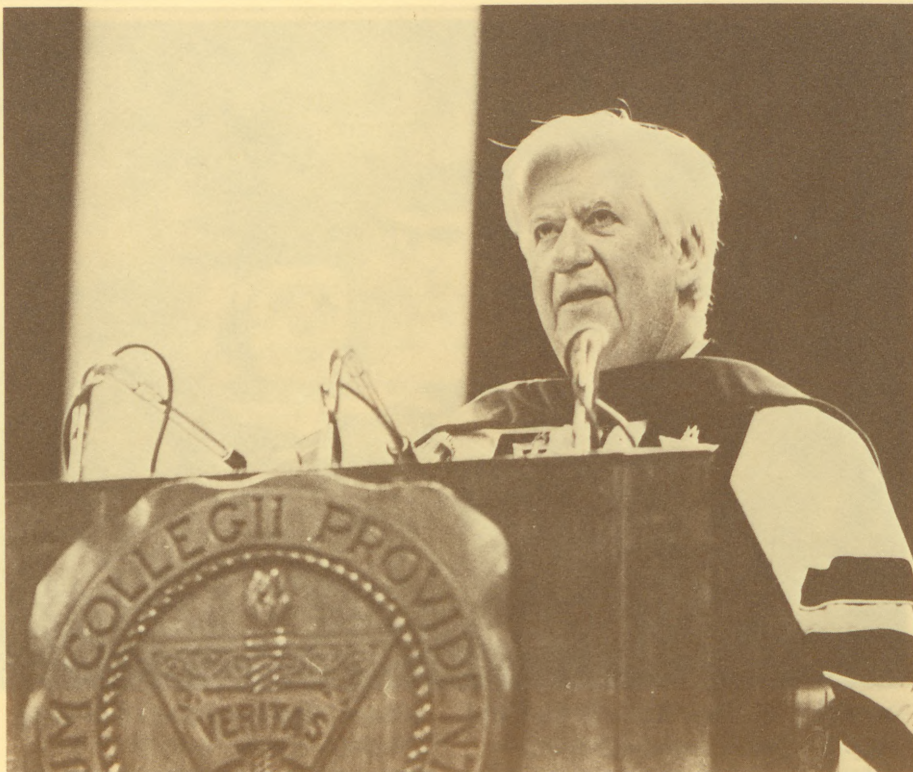
Students majoring in biology continued to be successful in gaining acceptance to health-related graduate and professional schools. In all, 25 biology majors will be attending medical and dental schools, as well as graduate schools in such fields a biomedical engineering or immunology. Among the medical schools that PC students will be entering this fall are St. Louis University, Vanderbilt, University of Massachusetts and the University of Connecticut. Some of the dental schools are Tufts,

Indiana, Maryland and Ohio State. Graduate schools include Georgetown, Yale, NYU and Washington University.

O'NEILL CHALLENGES GRADUATES: BE PART OF POLITICAL PROCESS

Congressman O'Neill opened his address to the class of 1979 by commending the new graduates for "continuing to emphasize public service and a sense of social responsibility," two themes which had been voiced a year earlier by Vice President Walter F. Mondale, during his commencement remarks. O'Neill urged them to "reverse some of the trends of the last decade. We simply cannot afford the increasing cynicism towards politics and the consequent reluctance to participate at the most basic level in the political process: voting."

A 43-year veteran of the political arena, O'Neill cited numerous instances in which he has seen "strong national leadership banish despair and bestow hope" — during the Great Depression, World War II, the Post-war rebuilding efforts, the Civil Rights movement, the era of space exploration, Israel's struggle for independence, and this nation's recent recession.



“It is very difficult to predict what challenges you will face, what problems you will solve, and what kind of society you will be living in during the 21st century because of the nature of the problems we face in America today. As we close this decade and look to the future, we must come to terms with the central challenge of our time — reconciling our tradition as a ‘people of plenty’ with the reality that our resources are limited.

“Alienation, pessimism, and non-participation are not characteristically American traits. The particular genius of the American people has been our commitment to individual freedom without sacrificing the cohesion necessary to make the United States the leading nation in the world.

“Inflation, oil consumption, and promoting safe and economically feasible energy alternatives will not be solved by hoping that a political leader will appear with the answers. We will only succeed when we cease to seek scapegoats and are convinced that there is a problem and that we must work together to seek a solution. As Americans, we must recognize that government cannot be left to the professionals. We must govern together.”

HONORARY DEGREES

In addition to honoring Speaker O’Neill, the college awarded honorary degrees during its 61st Commencement to one of the world’s best-loved conductors, Rhode Island’s Chief Executive, the Loyalty Fund’s retiring, two-term Chairman, a prominent Rhode Island banker, and a Dominican Bishop and church leader.

THOMAS P. O’NEILL, JR., *Doctor of Laws.* The first Democratic Speaker of the Massachusetts House of Representatives, O’Neill succeeded the late President John F. Kennedy as representative from the Eighth Congressional District, following Kennedy’s election to the U.S. Senate. “Since 1952 . . . you have been at the heart of the American democratic process, caring for every kind of public need from local or individual concerns to major national issues. Indeed, in your person you have come to exemplify what is meant by American representative government.”

MAESTRO ARTHUR FIEDLER, *Doctor of Music.* Under the late Maestro’s direction, the Boston Pops Orchestra has been recorded more than any other orchestra in the

world. Total sales of Pops albums, singles, tapes, and cassettes have exceeded fifty million. “The title of *Maestro* was never more aptly given to any person . . . you have delighted us and elevated our lives for half a century. For the God-given gifts you have shared with us; for your vibrant affirmation of life; for your enrichment of the quality of our culture, we hold you, *Maestro*, in honor and affection.”

J. JOSEPH GARRAHY, *Doctor of Public Administration.* The Providence Democrat was elected Governor of Rhode Island in 1976, following four terms as Lieutenant Governor and six years of service in the state Senate, where he was a Deputy Majority Leader. One of Garrahy’s chief priorities has been to foster cooperation among business and labor leaders and he has also devoted special attention to health-care issues. “You have been closely identified with working to meet three of our greatest public needs: health-care, opportunities for youth, and the economic renewal of Rhode Island and her New England neighbors. As a man of integrity and commitment you have exemplified how to render to Caesar the things that are Caesar’s and to God the things that are God’s.”

JOSEPH B. MC CARTY, *Doctor of Business Administration.* A 1940 Providence College alumnus, McCarty heads a textile corporation, based in Taunton, Mass., which has eight manufacturing plants throughout the country. During his tenure as Chairman of the Loyalty Fund, both annual campaigns have established new giving records and place Providence’s alumni support among the top 2% of the nation’s 1,186 private coeducational colleges. “. . . the college sees in you an alumnus who especially exemplifies the quality of loyalty upon which its future progress depends. Your unprecedented re-appointment for a second term as Chairman of the Loyalty Fund Drive not only testifies to your record-breaking success but also to your own loyalty, generosity, and stamina.”

continued on page 12

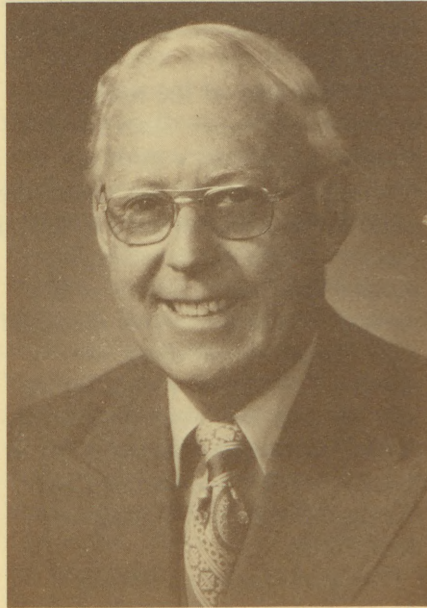
Loyalty Fund Shatters Past Records, \$470,993 Contributed by 7,000 Donors

Providence College's Loyalty Fund has again increased at a rate that places it among the top 10% of colleges and universities for growth in alumni giving.

Joseph B. McCarty '40, Chairman of the 1978-79 Loyalty Fund, reports that the fund surpassed its \$425,000 goal by \$45,993. A total of \$470,993 has been received and tabulated from 7,019 contributors. Included in these totals are \$401,110 from alumni, \$26,510 from parents, \$9,251 from non-alumni faculty and staff, and \$16,310 from corporations, and \$17,812 from friends of the college.

Associate Vice President for Development, William T. Nero, who has the overall responsibility for the Annual Fund, noted that the \$401,110 raised from 6277 alumni represented a \$43,002 increase and 448 additional alumni donors over the outstanding figures established in the 1977-78 Loyalty Fund. Also, the 40% alumni participation rate places Providence College among the nation's leaders as the average for all colleges only runs about 16%. P.C.'s percentage is certainly a tribute to the tremendous effort put forth by alumni leaders and volunteers in regional and class phonathons. Nero further noted that this year's alumni figures represent a 92% increase in the alumni donors and a 207% increase in alumni dollars over the last five years. In 1973-74, 3,269 P.C. alumni contributed \$130,595 and the participation rate was 25%. The current figures are even more astonishing when one considers the relatively young age of Providence College and the fact that more than one half of the college's alumni graduated in the last fourteen years. "Our annual giving program is heavily dependent upon the support of a relatively young group of alumni," McCarty explained. "The fact that so many do participate is especially encouraging, since we all realize the financial difficulties

related to additional schooling, business ventures and family matters that these young men and women are now facing.



Though the 1978-79 Annual Fund reports are not yet available from other colleges and universities, it is thought highly unlikely that many others can match Providence's outstanding progress in alumni giving over the last five years when Providence's alumni participation rate jumped from 25% to 40%. For example, reports distributed by the Council for the Advance and Support of Education showed the following alumni participation figures for the following schools for the 1973-74 and 1977-78 fiscal years: Boston C. (19%-27%), Brown U. (33%-31%), Bryant C. (Unk.-13%), Catholic U. (12%-13%), Clark U. (34%-37%), Fordham U. (5%-15%), Georgetown U. (15%-24%), Holy Cross C. (34%-43%), LaSalle C. (Unk.-14%), Manhattan C. (27%-22%), Northeastern U. (14%-14%), Notre Dame U. (59%-56%), RI School of Design (13%-20%), University of RI (22%-24%), University of San Francisco (15%-9%), St. John's U. (1%-6%), St. Joseph's C., Phil. (5%-23%), St. Louis U. (13%-12%), Tufts U. (20%-23%),

and Villanova U. (21%-21%).

McCarty, the first chairman ever to serve two consecutive terms in the Fund's chief leadership position, also expressed elation over the fact that amounts contributed from groups other than alumni had also increased over previous years and that current figures indicated an overall increase of 97% in donors and 212% in dollars over the 73-74 Loyalty Fund when \$150,622 was contributed by 3,569 alumni, parents, and friends. He attributed the continued progress of the Fund to a growing appreciation of the many outstanding features of Providence College, an increased awareness of the college's need for annual financial support, the continuing generosity of donors at special and general gift levels, and the exemplary support and leadership of the college's development staff and volunteer chairmen and workers at special gift, regional, and class levels.

The highest rate of alumni participation in the Loyalty Fund among the regions was in the New Bedford, Mass. region, where 57% of the solicited alumni responded to campaign appeals there under the direction of regional chairman, Ferdinand B. Sowa '48. Solicitations to the class of 1923, directed by class agent Very Rev. Vincent C. Dore, O.P. '23, resulted in the highest participation rate — 100% — by Providence's first graduating class. Credit for the greatest percentage of improvement over last year is equally shared by the New Bedford and New Hampshire regions. New Bedford's alumni participation rate rose from 43% (1977-78) to 57% (1978-79); while guided by Francis W. LaMorge '51, the New Hampshire region also increased 14% from 31% participation in the 1977-78 Fund to 45% this year. The class with the greatest percentage of improvement was 1943, closing up at 64% alumni participation, which is 19% above last year's 45% rate. Class agent for 1943 is Charles J. Fogarty.

A complete 78-79 final report will be mailed in the next few weeks.

Francis L. Gragnani '40 Will Head College's 1979-1980 Loyalty Fund



Selected to lead Providence College's 1979-1980 Loyalty Fund drive is Francis L. Gragnani '40, internationally successful businessman, Japanese art collector and devoted Providence alumnus. His appointment marks an auspicious beginning to the 37th annual fund drive which opens as Providence College celebrates its 60th anniversary.

Following a phenomenal Coca-Cola franchise career in Nagano, Japan that spanned 27 years, Gragnani returned to the United States in 1974 and now heads the Winthrop Financial Company Incorporated, an investment banking and real estate firm operating out of Washington, D.C.

A Fall River, Massachusetts native, Gragnani was assigned to the Far East area of the Coca-Cola Export Corporation in Yokohama, Japan in 1947 — following his graduation from Providence, a stint as an officer in the U. S. Army Air Corps, serving in India, Burma and China, and a period as a route salesman for the Fall River branch of the bottling company.

In Japan, Gragnani's career expanded rapidly. He was initially appointed a sales representative in Kokura, then plant manager in Tokyo, Okinawa, and Sendai followed by regional sales manager for Japan, Korea, and Okinawa, and on to vice president of sales of Coca-Cola (Japan) Company, Ltd.

When Gragnani was awarded the Coca-Cola bottling franchise for Nagano Prefecture, one of Japan's most popular recreational areas, he was the only foreigner among Coca-Cola's seventeen native franchised bottlers.

As Chairman of the Board, president and major stockholder of Nagano Coca-Cola's Bottling Company, Gragnani was repeatedly cited for outstanding achievement in market growth and development. Annual sales were charted at \$13 million; two major plants produced 1300 bottles of soft drink per minute; Coca-Cola, Fanta, Sprite and Hi-C became household words for the two million people living in Nagano's 8,000 square miles of dramatically beautiful Japanese countryside.

The recipient of an honorary doctor of laws degree from Providence College in 1975, Gragnani was honored for the impact his career has had in the Orient.

"When you returned home in 1974, you not only had built a notable new industry in Japan, but you carried with you many evidences of the esteem, respect, and genuine affection of the Japanese people. In your career you have also made a notable contribution to the satisfaction of mankind's spiritual thirst for peace and the refreshment of the spirit through mutual cooperation."

Gragnani is married to the former Charlotte Baldwin of Lanham, Maryland, who he met in Tokyo in 1954, where she was employed by the United States Occupation Forces. They make their home in University Park, Maryland.

Retiring chairman Joseph B. McCarty, Alumni Association President Robert E. Finneran, Rev. Thomas R. Peterson, O. P., college president, Associate Vice President for Development, William T. Nero are unanimous in their support of Gragnani as Fund Chairman. "Our

expectation is that Frank will bring the same judicious and decisive leadership to the college's Loyalty Fund drive that has characterized his remarkable business career," noted Father Peterson.

The 1979-80 Fund, for which a goal of \$525,000 has been established, will officially open on October 13, 1979 and continue through June 30, 1980. An advance appeal will begin on September 18, 1979, the 60th anniversary of the opening day of classes at P.C. Organizational plans are presently being formulated and leadership recruitment is now underway for the new Fund which will be conducted in four succeeding phases: Advance Gifts, Special Gifts, Regional Solicitation, and Class Solicitation.

Already appointed to leadership positions by Chairman Gragnani are the following Associate Chairmen: Stephen A. Fanning, Jr., Esq. '50, Regional Alumni Solicitation; Prof. Francis T. O'Brien, Non-Alumni Faculty and Staff; Very Rev. Thomas R. Peterson, O.P., Parents; Joseph W. Ress, Hon., Corporations and Friends; Henry T. Kaveny '27, Classes of 1923-1939; Wallace R. Tasca '40, Classes of 1940-1959 and John E. Martinelli, Esq. '65 Classes 1960-1979.

Also named to serve as Chairmen of the Special Gifts Committees are the following alumni: Francis L. Gragnani, '40, Major Gifts; Robert E. Finneran '53 and James G. Hagan '58, President's Club; William D. Slattery, Jr. '53 and Edward A. Iannuccilli, M.D. '61, Chancellor's Club; Frank M. D'Alessandro, M.D. '55 and Richard A. DeBlasio '56, Dean's Club; Robert J. Paci, Esq. '64 and Daniel J. Ryan '69, Century Club.

Co-Chairmen for the Golden Anniversary Class of 1930 are Anthony J. DeNicola '30 and Leo R. Hafey '30. Solitations for the Silver Anniversary Class of 1955 will be co-chaired by Francis E. Carey '55 and Charles E. Sullivan '55.

Regional and Class Chairmen are presently being confirmed. Their names will be announced in the next *Update*.

ALUMNI NEWS

FINNERAN '53, JOURNALIST ASSUMES PRESIDENT'S POST OF ALUMNI ASSOCIATION

Seven Providence alumni recently took office as members of the 1979-80 Board of Governors of the college's National Alumni Association.

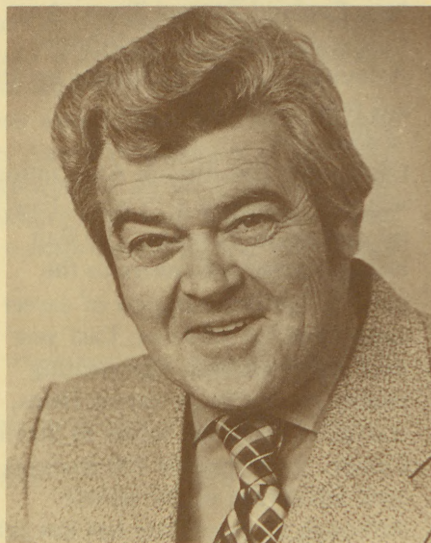
Journalist Robert E. Finneran '53 of North Andover, Massachusetts, became the new President after serving an elected term as Vice President this past year. Editor of the *Andover Townsman* weekly newspaper, Finneran has won several awards for his work including the 1977 New England Newspaper Association's award for best column. A vice president of the Massachusetts Press Association, Finneran has served as director of the Andover Chamber of Commerce and is a past Grand Knight in the Knights of Columbus. Finneran has been a member of the Alumni Board and chaired the Homecoming, Travel, Nominating and Boston area Loyalty Fund committees.

James F. O'Connell M'42, a resident of Yarmouth on Cape Cod, is the new Vice President and will automatically succeed to the Presidency in 1980-81. Retired from a distinguished 30-year career as a special agent with the FBI, O'Connell spent a major portion of his career in New York City where he played a key role in alumni activities. Through the years he served in almost every leadership capacity for the New York area alumni club, including several terms as president of that organization. Previously a member of the Alumni Board for three years, O'Connell served as chairman of the 1974 Homecoming Weekend, has worked on alumni travel programs and area club development, and continues to assist the college's fundraising efforts through Loyalty Fund phonathon committees.

This year's Treasurer is Elaine R. Ward '75, a claims representative for Aetna Life and Casualty Company in Providence, RI. Since graduation, Ms. Ward has been an active member of the Alumni Association and its Mal Brown Chapter in the Providence area, and has been a phonathon volunteer for the Loyalty Fund.

Elected secretary was Daniel A. Rinaldi '58, Vice President for secured lending with Industrial National Bank in Providence. A resident of Cranston, RI, Rinaldi has served as a volunteer for many alumni activities including student career counseling programs, Loyalty Fund special gift and class phonathons and the Capital Campaign. He is also a member of the Mal Brown Club and the Friar Front Court Club.

Selected for a three-year term on the Alumni Board, representing the classes from 1943 to 1947 is Dr. Ralph F. Pike '45, an orthopedic surgeon and president of the Rhode Island Orthopedic Group. Dr. Dominic B. Schioppo '58, a physician specializing in gastrointestinal medicine in New Haven, CT, on the staffs of Yale-New Haven hospital and St. Raphael's Hospital, has been elected Board representative for classes



Robert E. Finneran '53

from 1958 to 1962. Classes 1963 to 1967 will be represented by attorney Robert J. Paci '64 who operates a private practice in Providence and serves as legal counsel for the RI State Labor Relations Administration.

The new Board members join previously serving regular members: George A. Barbarito M'42, former Superintendent of Schools in New Haven; Daniel J. Ryan '69, Supervisor of the tax department of Peat, Marwick, Mitchell & Company in Providence; Joseph V. Shanley '49, Vice President of the Providence-based Duffy & Shanley public relations firm; Francis J. McLaughlin '36, Vice President for Marketing at the Providence Gas Company; Dr. William F. Brennan '56, an orthodontist in private practice in Warwick, and Susan E. McCutchan '75, an accountant for the Firestone Company in East Providence.

Last year's Alumni President, Tupperware Vice President James G. Hagan '58 will be serving on the Board for an additional one-year term as immediate past president.

The Alumni Board of Governors is the policy-setting body of the Alumni Association which now numbers nearly 20,000 P.C. graduates and former students. Since the Association does not collect dues, a contribution to the annual Alumni Loyalty Fund is the criterion for being placed on the "active" membership list. Any inquiries regarding the Alumni Association's program of activities should be addressed to the Alumni Office, Providence College.

AREA CLUB NOTES

Providence, RI

The Mal Brown Club (greater Providence area chapter of the Alumni Association) has announced plans for its 1979-80 program of events starting with the annual intra-squad basketball game and pre-game supper on the college campus on November 18th. Other activities include a Christmas party

on December 15th, a lecture series in January, a P.C. Theatre Arts night in March, and the Mal Brown Awards Dinner on April 19th. Details about these events and others that may be scheduled later will be sent to Providence area alumni via special mailings.

The new officers for the Mal Brown organization are: Martin Donnelly '51, president; Edward Donnelly '32, vice president; Heidi Kenny '75, secretary, and Robert Hynes '56, treasurer. Newly elected club board members are Edward Corbett '49 and Kathleen Moretti '73. They join hold-over members Howard Farrell '24, William Kenny '49, Joseph McCabe '47 and Wallace Tasca '40. The club finances its activities, including a student aid fund, through annual dues of \$7. Any alumnus of the college residing in the greater Providence area interested in joining should contact the Alumni office.

Washington, D.C.

P.C. basketball coach, Gary Walters, will be the guest speaker at a Washington, D.C. Area Club luncheon scheduled for September 19th at the Pier 7 Restaurant in Washington. The Alumni luncheon is the first of three planned for the year by the club. Other events featured in the club's program include a party following the P.C. vs Georgetown basketball game on December 15th, a dramatic performance and reception at the Hartke Theatre later in the year, an excursion to the U.S. Marine Parade in May and the annual President's Dinner to wrap up the year on June 14, 1980. Club President Pete McCarthy '60 is looking for volunteers to help promote alumni activities in the Washington, D.C. area to keep the momentum of last year's highly successful program going. Pete can be reached at his Pentagon office by calling (202) 694-1809 or at home in Alexandria, VA at (703) 836-3747.

St. Paul, Minnesota

Plans to establish a P.C. Alumni Club in Minnesota are being formed by Terry Creegan '70 of St. Paul. Terry recently hosted a meeting of



THE NATIONAL ALUMNI ASSOCIATION AWARDS dinner was held at the college campus on May 18th. The five alumni honored are pictured above with the college president, Very Rev. Thomas R. Peterson, O.P. They are, from right to left, Norman S. Dunn M'42, recipient of the Personal Achievement Award; Rev. John P. Kenny, O.P.'31, who received the Begley Faculty Award; Fr. Peterson; William J. Iovanna '31, cited for Service to Education; Dr. Gerald F. Rogers '41, honored for Service to the Alumni Association, and Henry T. Kaveny '27, recipient of the Faithful Friar Award.

18 Providence College grads residing in Minnesota who responded to a letter he mailed to sample interest in the project. The group hopes to schedule a reception later this year in conjunction with a mid-west trip by college officials. Details will be forthcoming.

BULLETINBOARD

Alumni Insurance Program

In response to many inquiries, a new enrollment brochure with details and application forms for the Alumni Group Life Insurance Program will be sent to Alumni in December. The Providence College Alumni Association, along with over 70 other colleges offer this low-cost insurance as a service through the New England Alumni Trust. Any dividends earned by the Alumni Association go into a special student aid fund for seniors.

Career Fair

Once again the Alumni Association will be sponsoring a "Career Fair" on campus in October. The Fair brings alumni volunteers to the campus for an afternoon of career counseling for students. Last year over eighty alumni, representing twenty-one different career fields, staffed information tables in Slavin Center. An estimated 700 students took advantage of the service. Although an exact date has not yet been set, the Alumni Association is

seeking volunteer counselors.

Anyone interested should contact the Alumni Office at (401) 865-2414 for details.

Class Reunions

Class years ending in the digit 0 or 5 are slated for five year reunions this academic year. The classes of 1964 and 1974 are also considering a reunion this year. Watch your mail box for details.

Homecoming

Save the dates . . . this year's Homecoming '80 will take place on the weekend of February 8, 9, 10. It promises to be one of the biggest and best yet, featuring the P.C. vs Louisville basketball game, an Athletic Hall of Fame Luncheon, and great entertainment headlined by Leo Connerton. The October issue of *Update* will contain more details.

PC Athletic Hall of Fame

The Providence College Athletic Hall of Fame Committee will soon be meeting to consider candidates for the 1980 induction and welcomes any suggestions from alumni. Nominees must be alumni of Providence College, graduated for at least ten years or current or former members of the college's athletic staff. Correspondence should be directed to: P.C. Athletic Hall of Fame, c/o Alumni Office, Providence College, Providence, RI 02918.

SICILY

November 7-15, 1979
Boston Departure

DELUXE

\$458.85 COMPLETE
Per person-Double occupancy
Single Supplement - \$100.00

YOUR TRIP INCLUDES:

- Round trip jet transportation to **Palermo, Sicily**, via Trans International Airlines' wide-bodied jet (meals and beverages served aloft) ; stereo music and in-flight movies available at a nominal charge; normally evening departure
- **Deluxe** accomodations for seven nights at the magnificent **HOTEL ZAGARELLA & SEA PALACE** on the beautiful Mediterranean
- Festive Sicilian wine and cheese party
- Continental breakfast daily (tax & service included)
- Complimentary chaise lounges
- Exciting low-cost optional tours available to Rome, Sorrento, Taormina, etc.
- All gratuities for bellboys and doormen
- United States departure tax (\$3.00) included
- All round trip transfers via deluxe motorcoach with Sicilian hosts, and baggage handling from airport to hotel
- Your personal Sicily travel guidebook
- Free time to pursue your own interests; no regimentation
- Experienced tour director and hotel hospitality desk, staffed by on on-site team of professionals

For Reservation Form contact Alumni Office
at Providence College

A Year of Excellence!

How can a small New England college with a limited athletic budget have a basketball team that takes on the likes of Michigan, UCLA, and North Carolina? And how does Lou Lamoriello lead a hockey team against such perennial powers as Clarkson, BU and New Hampshire? What prompted some of Ireland's top runners to opt for Providence College instead of Villanova? And why should a college with 3,400 undergraduates have a homecourt attendance record of almost 150,000?

If these questions intrigue you and you would like to read some insight answers, then subscribe to PC Sports News. In addition to receiving newsletters, you will get a score of publications on all of PC's athletic teams. The entire package costs \$10. Simply send your check along with the order form on this page to the Sports Information Office, Providence College, Providence, R.I. 02918.

Name _____

Address _____

City _____ State _____ Zip _____

Home Phone _____ Class of _____

ALUMNI GOLF

tournament



**FRIDAY
SEPT. 28**

tee-off
11 - 2 p.m.

CRESTWOOD

C.C. Wheeler Rd.
REHOBOTH, MA.

Again we've been able to secure one of the area's finest clubs for our annual Fall tournament. Last year over 100 participants had a very enjoyable day and we expect an even bigger and better tournament this year . . . we hope you'll join us. Make up your own foursome or the committee will place you with others if you wish. Cost of \$25. includes entry and greens fees, complete dinner, prizes etc. Carts optional at extra charge.

To enter list the names of the people in your party or specify that you wish to be placed with others. **Include a check for \$25. p/person** payable to P.C. Alumni Assoc. If possible let us know when you wish to tee-off. **Send everything to:** Alumni Office, Providence College, Providence, R.I. 02918.

PROVIDENCE UPDATE

Is a publication of the
Office of Public Information
Joseph T. McAleer, *Director*
and the Alumni Office.
Joseph Brum, *Director*
Providence College
Patricia S. Vieira, *Editor*

**MEMORIAL FUND
ESTABLISHED IN HONOR OF
FATHER HOGAN**



A special memorial fund in honor of the late Rev. Ernest A. Hogan, O.P. has been established. Proceeds from the fund will be used to establish scholarships for Providence students. Father Hogan, a 1933 graduate of Providence, was the college librarian for 35 years. During his tenure as librarian, Father Hogan combined his administrative duties with teaching and led the drive to build the Phillips Memorial Library, which won several architectural awards. In 1975 the college's Mal Brown Club gave Father Hogan the Dore Award for loyalty and service to the college.

Contributions for the memorial fund should be sent to the Development Office at Providence College, Providence, R.I. 02918.

HONORARY DEGREES continued

JOHN J. CUMMINGS, JR., *Doctor of Humanitarian Service.* A former member of the college corporation, Cummings has a long record of distinguished service to the Rhode Island community. The head of Rhode Island's largest commercial bank and holding corporation, his civic involvements have ranged from Chairman of the Catholic Charity Fund to Chairman of the Providence Civic Center Authority. "You have given your outstanding professional talents so often and so variously to the charitable service of others. Your work . . . has also marked you as one whose social vision is both broad, constructive, and truly caring."

BISHOP THOMAS CAJETAN KELLY, O.P., *Doctor of Sacred Theology.* A 1953 graduate of Providence, Bishop Kelly is the Auxiliary Bishop for the District of Columbia and also holds one of the most influential positions within the American Catholic Church. He is the chief administrative officer of the National Conference of Catholic Bishops, the national association

through which the Church's bishops establish policy for more than 49 million American Catholics. "You hold a post of vital importance in a very critical period of history for the Church in America and in the world at large. Your selection for that position is a measure not only of your fine accomplishments in the past but also of significant confidence in your ability to contribute to meeting the issues and problems that challenge us today and will shape our world tomorrow."



**PROVIDENCE
UPDATE**

NON PROFIT ORG.
U.S. POSTAGE
PAID
PROVIDENCE, R.I.
PERMIT NO. 561