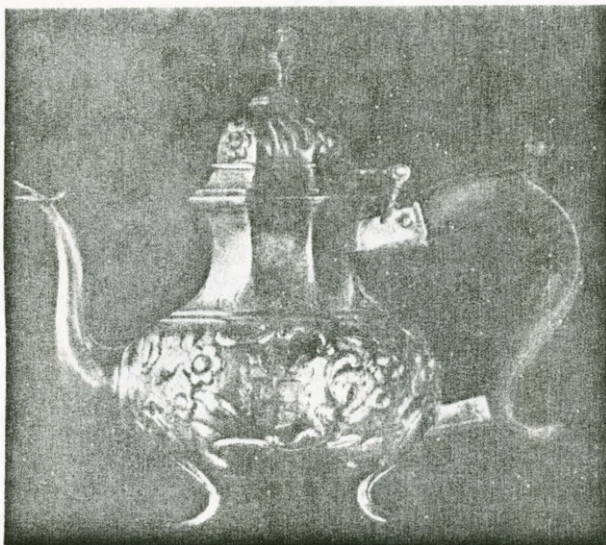


An Early 18th Century New York Teapot



Queen Anne octagonal, bulbous, pear-shaped teapot on three legs, (Dutch influence) by the noted silversmith Simeon Soumaine, c. 1685-c. 1750. Marked on both sides SS in square. Later period chasing on cover and lower body, framing on the left side, the earlier engraved arms.

GEBELEIN *Silversmith*

79 CHESTNUT ST., BOSTON 8, MASSACHUSETTS