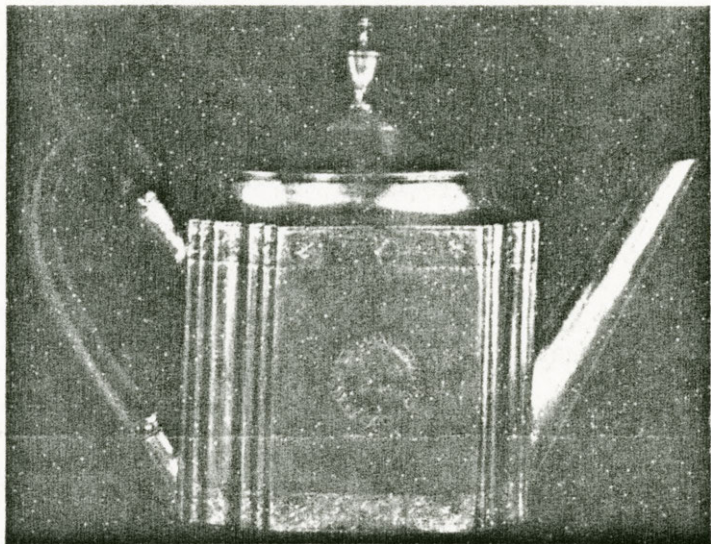


*From Paul Revere's Locale
by a Rarer Boston Silversmith*



TEAPOT, by Joseph SMITH, c. 1772-1789

This fine specimen demonstrating the high proficiency of a little-known maker who is represented by very few known extant pieces, was owned by family acquaintances of the Reveres in Canton, Massachusetts. The teapot of straight-sided oblong design in unusual heightened proportion, with fluted corners and interesting engraved borders featuring the thistle as motif, bears the maker's mark I. SMITH twice stamped under center of the flat bottom.

The base dimensions $5\frac{1}{8}'' \times 3\frac{3}{4}''$, capacity 3 pints.

GEBELEIN *Silversmith*

79 CHESTNUT STREET

BOSTON, MASSACHUSETTS

Reprint from AMERICAN COLLECTOR, November, 1947