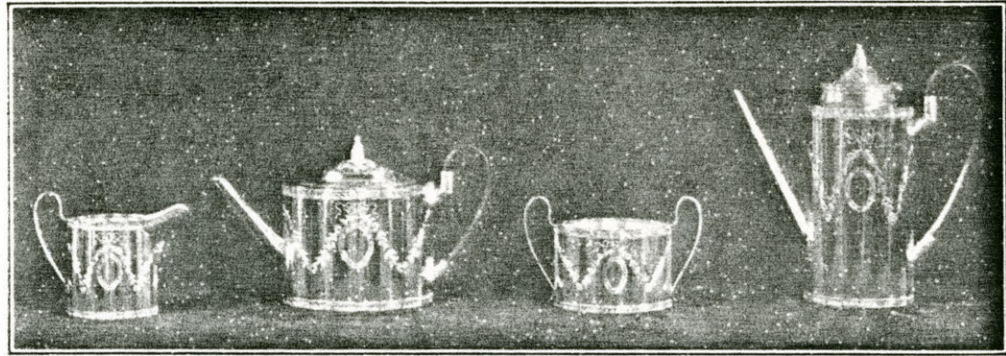
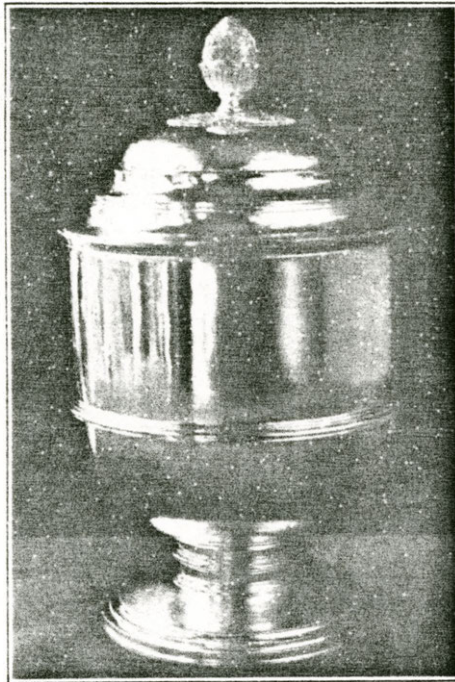


STERLING SILVER *by* GEBELEIN *of* BOSTON



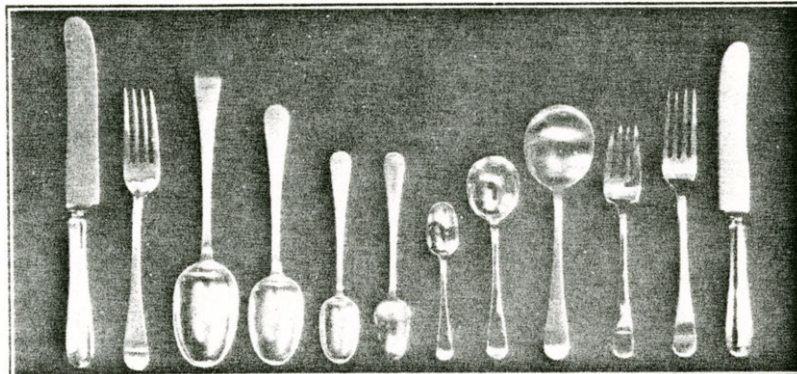
"A FAVORITE DESIGN OF PAUL REVERE"

The finest of olden days is found to be the finest today as interpreted by today's old school silversmiths in this sterling silver service.



"GUILD CUP"

A presentation piece of heavy solid silver adapted in design from the mid-sixteenth century and made entirely by hand.



"PAUL REVERE PLAIN"

Flat silver patterned and fashioned according to the precedent of the famous Colonial Boston Silversmith.