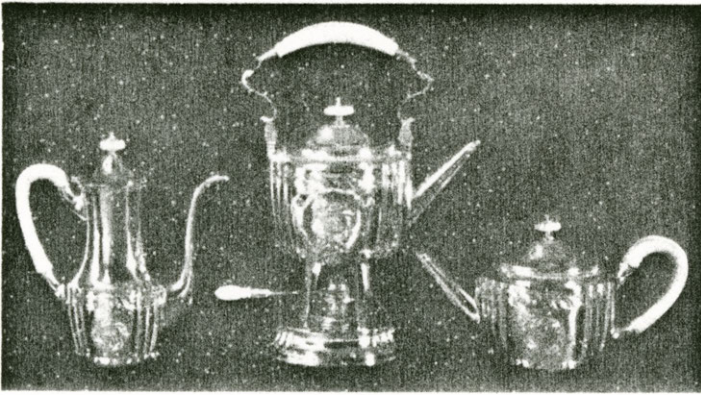


## Tea Services



**M**ATCHING pieces in antique silver of the desirable early periods are extremely rare. In the absence of a plenitude of original "sets," Georgian services are frequently assembled from pieces that have come down separately and in many cases never belonged to sets, cream pitcher, sugar bowl or basket, teapot, coffeepot, each designed for its own purpose, perhaps engraved similarly, or harmoniously styled under the influence of the period.

Fortunate coincidences of pieces sometimes result in the forming of excellent combinations, and there are antique tea urns, coffee jugs or wine ewers available for the selection of appropriate hot water accessories of the period.

While the available old pieces have a distinct charm in their age and early associations, the factors of condition and size, as well as completeness for present-day purposes directs consideration to the possibility of a new silver set made in the design and character of the old or styled in keeping with the period desired. Sometimes a single early piece becomes the interesting nucleus for a specially made service when there is opportunity to have more pieces supplied to order in the design adapted to them.

For the successful achievement of the desired result such an opportunity is provided only by old-school silversmiths who, through their understanding of the essential construction and craftsmanship, are capable of providing the reproduction or adaptation true to the original practice in design and technique.

In the shop of Gebelein the fashioning of matching or harmonizing pieces, or of the entire service to suit the individual preference of design, is featured work of hands long skilled in the methods of silversmithing as a craft, personally supervised by George C. Gebelein, master craftsman, whose career began with apprenticeship in the direct line of trade descent from the early artisans in Boston.

*Illustrated: COFFEEPOT, HOT WATER KETTLE, AND TEAPOT, PART OF A FAMILY SERVICE MATCHING AN OLD IRISH GEORGE III CREAMER. THESE PIECES AS DESIGNED AND EXECUTED BY GEBELEIN TO PRIVATE ORDER, HAVE BEEN INDIVIDUALLY HAND-FASHIONED IN THE MANNER OF SILVERSMITHING THAT OBTAINS IN THE ORIGINAL PIECE*

**GEBELEIN**

79 CHESTNUT STREET

*Silversmith*

BOSTON, MASSACHUSETTS