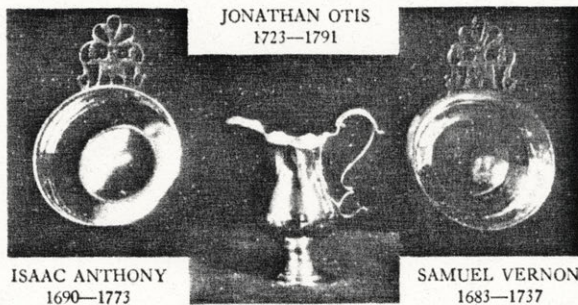


## Early Silver of Rhode Island



Two porringers with early scroll-pierced handles and the graceful inverted pear-shaped cream pitcher here represent three silversmiths of Colonial Newport. Best known is Samuel Vernon, maker of the porringer at the right. His mark SV over *fleur-de-lis* in a heart shape is stamped under the handle. . . . A comparative unknown is Isaac Anthony, so little of his work has been found. He came to Newport from the neighboring town of Swansea, Mass. The Anthony porringer is of particular interest to the connoisseur as a "proof piece" in revealing together on the same piece both marks of the maker: *I. Anthony*, in rectangle under the handle, also the initials mark IA in oval stamped within the bowl. . . . Jonathan Otis was born in Sandwich, Mass., on Cape Cod, but began business in Newport, working there until the Revolutionary War, thereafter residing at Middletown, Conn. He was commander of the militia with the rank of major. His mark *Otis*, in flat oval, appears to the left of the handle of the cream pitcher, a fine specimen of the period c. 1760. Both porringers measure approximately 5 inches in diameter, and the pitcher, 5 inches in height. . . . They are from the collection of George C. Gebelein, Silversmith of Boston, and Antiquarian specializing in early silver, pewter, and Sheffield plate. These pieces and other early silver may be seen by appointment with Mr. Gebelein at 79 Chestnut Street, Boston. Correspondence from interested persons is cordially invited.