

Providence College

vs.

Canisius

PROVIDENCE, R. I.

OCT. 20, 1940

PRICE 15c





Crawling, pushing, or helping ball-carrier. (Penalty for helping ball-carrier, 15 yards; otherwise, 5 yards.)



Holding. (Penalty—by offense, 15 yards; by defense, 5 yards.)



Delay of game or extra time-outs. (Penalty, 5 yards.)



Player illegally in motion. (Penalty, 5 yards. If from shift or huddle, 15 yards.)



Unnecessary roughness, illegal defensive use of the hands. (Penalty, 15 yards.)



Interference with forward pass, pass touching ineligible player, or "screening" pass receiver. (If penalty on offense, 15 yards and loss of down; interference by defense, ball to offense on spot of foul as first down.)



Penalty refused, incomplete pass, missed field goal or conversion, both sides off-side, etc.



Illegal forward pass.

Military salute also used for clipping, followed by striking the back of the knee with hand. (Penalty, 15 yards.)

Signal also used for disqualification fouls and for running into or roughing the kicker. In the latter case, the military salute is followed by swinging the leg as though punting.



Safety.



Score — touchdown, field goal, or conversion.



Offside and violation of kick-off formation. (Penalty, 5 yards.)



Time out.

After the Game...

COCKTAILS in the famous Falstaff Room or the smart Bacchante Cocktail Lounge.

DANCING and entertainment at dinner and supper in the Garden Restaurant—two floor shows nightly—dinner from \$1.45. No cover charge.

DINNER from \$1.00 in the Town Room, street floor. Bar Service.

"It costs no more at the Biltmore"

**PROVIDENCE
BILTMORE**

In Boston

COPLEY SQUARE HOTEL

"Where Cordiality is the Keynote"

- * Rooms with bath from \$2.50.
- * Cocktail Bar.
- * Grill — Entertainment Nightly.
- * Excellent New England Dishes.

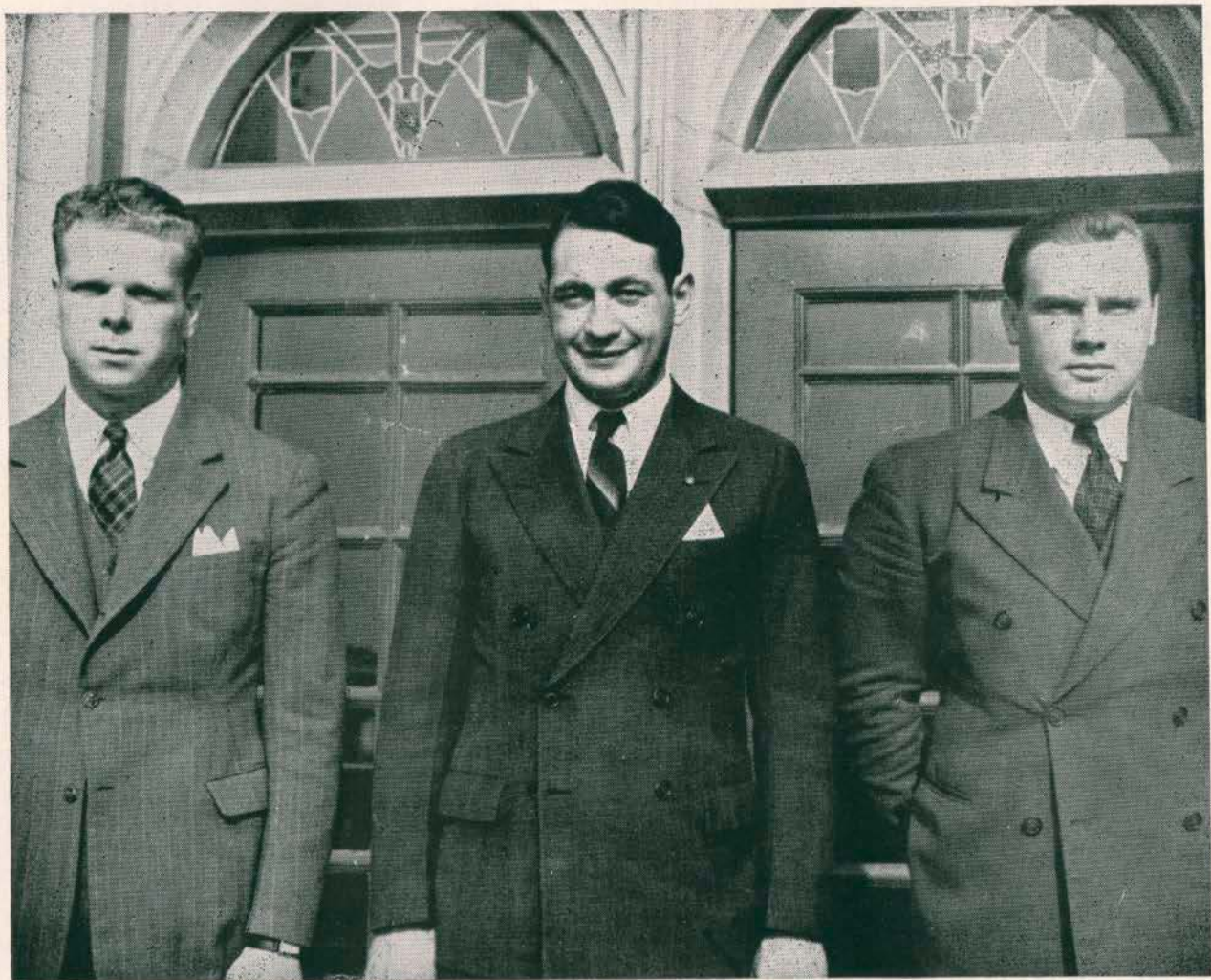
Copley Square Hotel

HUNTINGTON AVE. at EXETER ST.

BOSTON, MASS.

Official Souvenir Program

Providence College Coaching Staff



Ass't Coach EDWARD J. CROTTY Head Coach HUGH J. DEVORE Ass't Coach JOSEPH A. DULKIE

In Nothing Flat

by LOU FITZGERALD

"Boy, have you got a racket. Nothing to do but go to all the games and take the trips with the team. You certainly have the easy life. I should have been a publicity man, it is a cinch. All you have to do is round up a few players with foreign sounding names, and spread the old baloney about them across the pages of the papers.

"Take Borzi . . . Borzilaus . . . say, how do you pronounce his name, anyway? That's something you ought to do, instead of writing about plunging, swivel-hipped fullbacks—give the fans a code to the pronunciation of these names. Holy smokes, that's tough; trying to say some of those names; sometimes I wonder that you're able to spell them when you send out news stories.

"Saw you down town the other day. Oh, going up to see Arthur Markey? There you go, see what I mean by your having a racket? Just drop in to see him and sit around and bat the breeze for an hour or so, and then he speaks about Providence College for five minutes on the air, and you tell how hard you worked to get a couple of plugs in. Don't you ever feel ashamed putting your hand out for the old pay check? Radio, that's a cinch. Just give a commentator a couple of ideas, and the captain or coach or somebody to interview, and you're all set for the week. I suppose the hours are kind of tough, but what the heck; you'd probably be out, anyway. And even if you do miss a little sleep, you can catch up on it after the season is over.

"Yup, I figure you've got a racket. Only why don't you get more pictures in the papers? I like to see plenty of pictures. Oh, mostly you have to pay for pictures, you say. But what's the difference; you probably have a tremendous budget to work with. Haha. Anyway, the local paper will take pictures for you. All you have to do is figure out a couple of new angles. That ought not to be hard. For instance you could have . . . well, you could . . . well that's your job, anyway. Why should I be giving you the benefit of my ideas?

"Writing sports isn't hard. All you have to do is to make it sound on paper just the way people talk. Of course I don't suppose you can have any double negatives, but that's easily avoided. Then think up a couple of catch phrases and you're made. Look at the way the Four Horsemen became famous. And the Galloping Ghost, and the Seven Blocks of Granite. Why don't you think up something distinctive about the Friars like that? I know if I had nothing to do but sit around in a nice office all day, I'd soon have some nicknames that would catch on.

"Yessir, your's is the job. Welcomed everywhere you go. Just hand out a few passes here and a couple more free tickets there and everything is all set. Do you ever have any trouble convincing people that they ought not to be on the free list? I suppose plenty of people think you run these games for charity—and that they're the charity. So what if they do say you're stingy; somebody has to pay the freight.

"All in all, I guess it's pretty easy, isn't it? Make your own hours, work when you want to, and say you're working when you don't want to. If a newspaperman calls up for some information, tell him you haven't got it. After all, they're supposed to be paid to find out some of those things. Or do you believe in the old motto of 'Dealing in Service'?

"Did you ever think you'd like to just sit down and watch a football game and enjoy it; instead of figuring that you have to do some work because of it? I suppose by the time football season is over you never want to look at another halfback, or hear of another spinner, or off tackle play. Something like the kid who works in the ice cream parlor?

"Hey! Where are you going? To get the changes in the starting lineup? Why don't you have these programs printed right in the first place? Boy, have YOU got the racket!"

**PROVIDENCE COLLEGE FOOTBALL
STAFF**

HEAD COACH—

Hugh J. Devore, Notre Dame, '34.

Assistant Coach—

Edward J. Crotty, Notre Dame, '37.

Assistant Coach—

Joseph L. Dulkie, Fordham, '37.

Co-Captain—

Charles T. Avedisian, '41, R. I.

Co-Captain—

Casimir Potera, '41, R. I.

Freshman Coach—

Anthony G. Pariseau, Prov., '39.

Manager—

Samuel Kusinitz, '41, R. I.

Trainer—

John Cerra

Business Manager of Athletics—

Paul J. Dunne



REMAINING GAMES

October 23

R. I. State College Cranston Stadium

November 2

Springfield College Spfld., Mass.

November 10

LaSalle College LaSalle Field

November 17

St. Anselm LaSalle Field

November 23

Catholic University, Wash. D. C.



POTERA

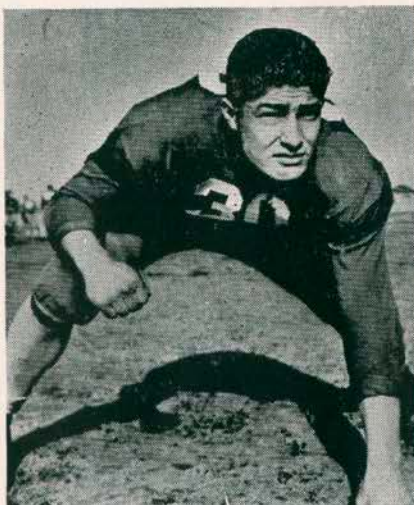
HAPONIK



**P
R
O
V
I
D
E
C
N
E**



SCANLON



ALEXAKOS

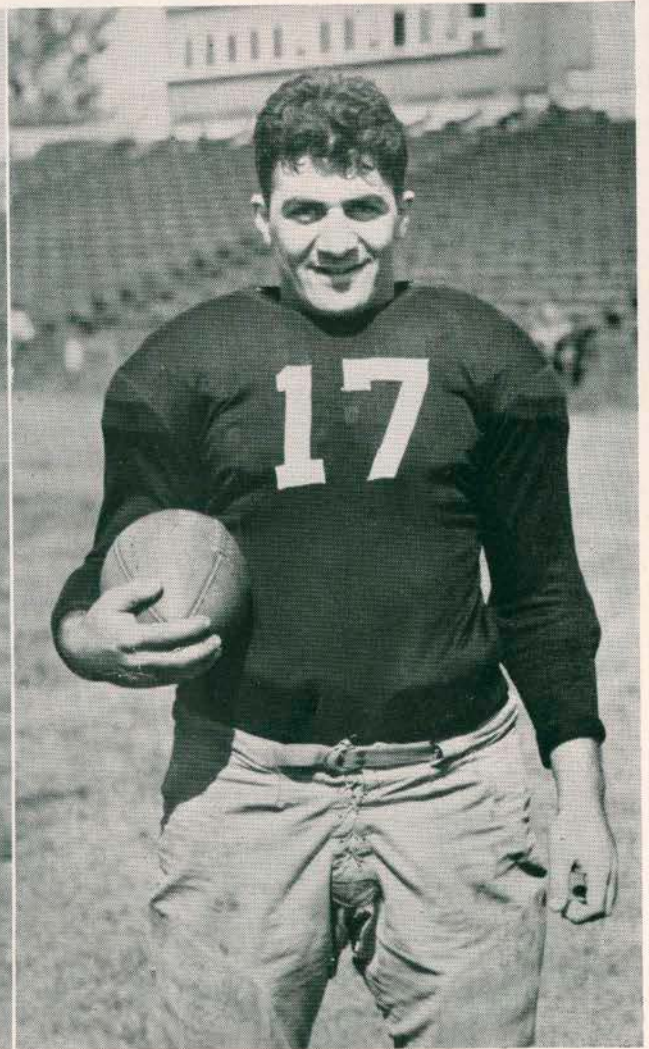


KOWALSKI

Providence Co-Captains



POTERA



AVEDISIAN

Providence Squad Statistics



No.	Name	Position	Yr.	Ht.	Wt.	Home Town
11	Pliska, Joseph	Tackle	'43	6½	194	Fitchburg, Mass.
12	Ditri, Anthony	Tackle	'43	5.7	192	Bloomfield, N. J.
13	Rafferty, James	End	'43	6.	185	Worcester, Mass.
14	Marone, Horace	Tackle	'42	6.	200	New Haven, Conn.
16	Zenobia, Paul	Fullback	'43	5.8	178	Danbury, Conn.
17	Avedisian, Chas. (C)	Tackle	'41	5.8	190	Pawtucket, R. I.
18	Roy, Raymond	Halfback	'42	5.10	178	Hartford, Conn.
19	Quegan, Edward	Halfback	'42	5.10	175	Taunton, Mass.
20	Kowalski, Ray	Fullback	'42	5.7	165	Adams, Mass.
65	Sarries, George	Center	'41	6.2	208	Millis, Mass.
22	Yockers, John	Halfback	'42	5.9	174	Tenafly, N. J.
58	Budnowski, Nich	End	'43	6.	185	Albany, N. Y.
25	Vaghi, Joseph	End	'43	6.3	182	Danbury, Conn.
32	Stonkus, John	Fullback	'42	6.	190	Stoughton, Mass.
27	Cimini, Louis	Tackle	'43	5.11	205	Providence, R. I.
28	Borzilaukas, Ed	...Guard	'43	5.9	186	Waterbury, Conn.
30	DiLuglio, Dom	Center	'42	6.1	180	Cranston, R. I.
31	O'Connell, Jim	Halfback	'42	5.10	162	Burrillville, R. I.
33	Cronin, Don	Center	'41	6.2	200	Baltimore, Md.
34	Werbicki, John	End	'41	5.9	165	Providence, R. I.
35	Larkin, James	End	'43	6.	173	Providence, R. I.
36	Moore, Tom	Quarterback	'43	5.10	170	Mt. Vernon, N. Y.
37	Pettine, Jim	Quarterback	'41	5.10	167	Cranston, R. I.
38	Franco, Frank	Quarterback	'42	5.6	171	Bound Brook, N. J.
39	Potera, Casimir (C)	End	'41	5.9	179	Warren, R. I.
40	Reilly, William	Tackle	'42	6.	206	New York City
41	Carcieri, Nich	Guard	'42	5.10	169	East Greenwich, R. I.
42	Iorio, Sam	Halfback	'42	5.8	168	Jersey City, N. J.
43	Sullivan, Jos.	End	'42	6.	190	Providence, R. I.
44	Pariseau, Jos.	Guard	'41	6.	181	Attleboro, Mass.
45	Coyle, James	Quarterback	'42	5.7	157	Valley Falls, R. I.
46	Juges, William	Fullback	'43	5.10	186	Worcester, Mass.
47	Juges, Joseph	Halfback	'42	6.1	172	Worcester, Mass.
48	Scanlon, Walter	Tackle	'42	6.1	225	Taunton, Mass.
50	Roth, Edward	Guard	'43	6.	182	New Haven, Conn.
51	Haponik, Ed	Halfback	'42	5.11	181	Taunton, Mass.
49	O'Connell, Harry	Halfback	'43	5.10	170	No. Dighton, Mass.
60	Alexakos, Theo	Guard	'41	6.	207	Dracut, Mass.

Do YOU SMOKE THE CIG

Providence

LE	LT	LG	C	RG	RT	RE
Sullivan	Avedisian (C)	Borzilaukas	Sarris	Carcieri	Marone	Potera (C)
43	17	28	65	41	14	39

QB
Pettine
37

LHB
Kowalski
20

RHB
Yockers
22

FB
Stonkus
32

Squad List

11 Pliska, t	30 DiLuglio, c	43 Sullivan, e
12 Ditri, t	31 O'Connell, b	44 Pariseau, g
13 Rafferty, e	32 Stonkus, b	45 Coyle, b
14 Marone, t	33 Cronin, c	46 Juges, W., b
16 Zenobia, b	34 Werbicki, e	47 Juges, J., b
17 Avedisian, t	35 Larkin, e	48 Scanlon, t
18 Roy, b	36 Moore, b	49 O'Connell, b
19 Quegan, b	37 Pettine, b	50 Roth, g
20 Kowalski, b	38 Franco, b	51 Haponik, b
22 Yockers, b	39 Potera, e	58 Budnowski, e
25 Vaghi, e	40 Reilly, t	60 Alexakos, g
27 Cimini, t	41 Carcieri, g	65 Sarris, c
28 Borzilaukas, g	42 Iorio, b	

Officials

Referee..... L. E. Ball, Mass. State
Umpire..... Ben Riley, Jr.



CIGARETTE THAT

Satisfies

THAT'S COOLER... BETTER-TASTING
DEFINITELY MILDER



Canisius

LE Haber 37	LT Osbourne 41	LG Palka 44	C Toth 31	RG Frank 35	RT Centofanti 17	RE Houghton 43
-------------------	----------------------	-------------------	-----------------	-------------------	------------------------	----------------------

QB
Marinaccio
21

LHB
Poillon
28

RHB
Diringer
40

FB
Colella
34

Squad List

10 Sabella, t	26 Piccolo, c	37 Haber, e
11 Hennesen, b	28 Poillon, b	38 Griffin, b
12 Ponto, b	30 Basile, g	39 White, e
17 Centofanti, t	31 Toth, c	40 Diringer, b
20 Spencer, g	32 Blodzinski, g	41 Osbourne, t
21 Marinaccio, b	33 Propis, e	42 Thompson, t
22 Hurley, b	34 Colella, b	43 Houghton, e
23 Vertino, g	35 Frank, g	44 Palka, g
25 Ward, b	36 Brzezinski, b	

Officials

Head Linesman.....	H. A. Wiper
Field Judge.....	J. E. Sullivan, Holy Cross

Providence Squad



Upper Left, CRONIN

Upper Right, SARRIS

Lower Left, PARISEAU

Lower Right, WERBICKI



RUM and MAPLE TOBACCO CORP.'S

Original

RUM and MAPLE

REG. U. S. PAT. OFF.

BLEND 53

PIPE MIXTURE and CIGARETTE

*It pleases
all
pipe smokers*

*Famed
for
Flavor*

Mild . . . not too sweet . . . with an aroma that even women are crazy about! That's Original Rum & Maple Pipe Mixture, Blend 53. A choice blend of tobaccos, *infused* with genuine Jamaica Rum and pure Vermont Maple Sugar. America's No. 1 Fine Tobacco.

A new . . . a unique . . . sensation in cigarette flavor . . . the Original Rum & Maple Cigarette, Blend 53C. Made from fine domestic and Turkish tobaccos *infused* with genuine Jamaica Rum and Pure Vermont Maple Sugar. Not sweet, but superlatively mild and s-m-o-o-t-h.

When you buy Pipe Mixture or Cigarettes, be sure that you get the Original—guard against imitators who print "Rum and Maple" on the package but not as part of their brand name.

LOOK FOR

"Blend 53" on Pipe Mixture—"Blend 53C" on Cigarettes and Rum & Maple Tobacco Corporation on all packages



25c
was 70c



15c
was 40c



Price
Reduced—
NOW
20 for 15c

Products of RUM & MAPLE TOBACCO CORPORATION • NEW YORK, N. Y.



MARONE



Top: STONKUS
Below: PETTINE

Providence



HARKINS HALL

Problems of Providence

by

LOUIS C. FITZGERALD, *Director of Publicity*

The Friars of Providence College, with a record of three defeats in as many starts, open their home campaign this afternoon against the Golden Griffins of Canisius. Determined to hit that win column for the first time this season, this afternoon's meeting is calculated to be anything but hospitable to the Vincentian eleven which has travelled all the way from Buffalo for today's contest.

This marks the third gridiron meeting of the two teams, the Friars and the Griffs having battled to scoreless ties in 1929 and 1930. The Vincentians, under the able guidance of head coach Jimmie Wilson—known in the pigskin parlors as the small silent one—are an aggregation to be wary of. They are members of that dreaded powerful "Three", upper New York State's most powerful triumvirate of football prowess, comprising Niagara University, St. Bonaventure's, and Canisius.

The Friars met St. Bonaventure last year and fared not too well; they met Niagara this year and fared not well at all. Lest the good citizenry of Lake Erie and environs be given misguided impressions about the Rhode Island brand of football, Providence College is out this afternoon to use Canisius as an example, and to show what can really be done when the heat is turned on.

The Griffs use the double wing back system, as opposed to the Dominican's Notre Dame style

of play. They have an able quarterback and captain in Tony Marinaccio, who does not intend to be outdone simply because the Friars have two captains, end Cas Potera and tackle Charley Avedisian. Further, the visitor's have a most presentable backfield—including a chap called Colella who runs, passes and kicks; whom the Providence team will meet with its fast forward line.

Assistant coach Edward Crotty who scouted the Griffins in their game against LaSalle College last weekend, reports that the forward wall of the Buffalo team is a fast charging, well knit group. At right end is Jimmie White, who blocked a punt against LaSalle, then chased it across the goal line, falling on the ball for the only score of the game. Providence may well have its hands full with brother White before the afternoon is well along.

Following the Canisius game, the Friars will have but two days of rest, for on Wednesday night they will meet R. I. State College under the floodlights at Cranston Stadium. On Nov. 2nd, Providence journeys to Springfield to meet the Gymasts, and on Nov. 10, they return to this field for the game with LaSalle College of Philadelphia. The final home game will be played on November 17th here at LaSalle when the Hawks of St. Anselm will be met. The season will be brought to a close on November 23rd at Washington, when the Friars and Catholic University meet.

Penalties

- 1 Taking more than three times out during either half
- 2 Illegal delay of game
- 3 Failure of substitute to report to umpire
- 4 Violation of kick-off formation

- 13 Team not ready to play at scheduled time
- 14 Substitute communicating with teammates before ball is put in play
- 15 Illegal substitution (Player also suspended from game)
- 16 Failure to stop at least one second on shift play
- 17 Forward pass by member of team which did not put ball in play

- 29 Striking, kneeling, or kicking opponent—half the distance to the goal and disqualification of offending player
- 30 Foul within one yard line—half the distance to the goal

LOSS OF FIVE YARDS

- 5 Failure to maintain proper alignment of offensive team before ball is snapped. Also, backfield man illegally in motion
- 6 Offside by either team, or encroachment on neutral zone
- 7 Attempt to draw opponents offside

LOSS OF FIFTEEN YARDS

- 18 Forward pass touched by ineligible player
- 19 Intentional grounding of forward pass
- 20 Interference by member of passing team with defensive player eligible for pass
- 21 Interference with fair-catch or tackling player before ball is caught
- 22 Illegal use of hands and arms by offensive players

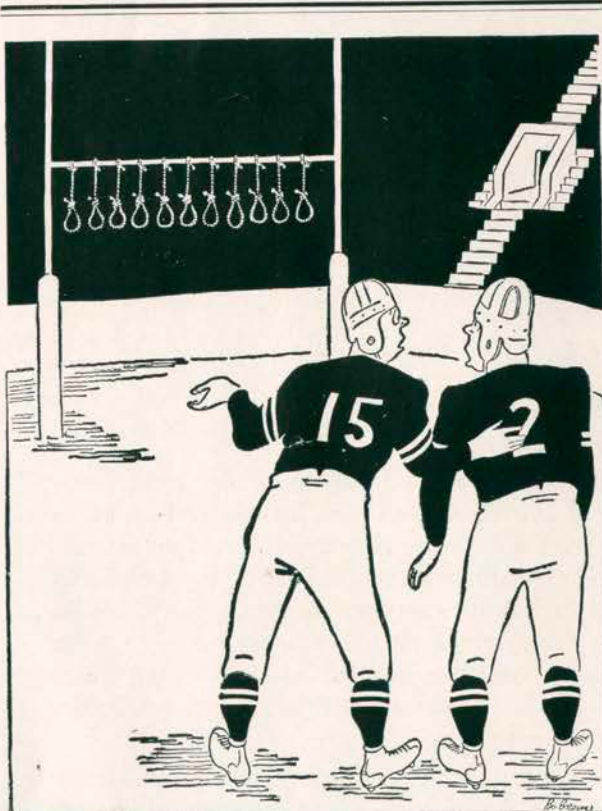
- 8 Taking more than two steps with ball after signalling for fair catch
- 9 Illegal use of hands and arms by defensive players
- 10 Flying block or flying tackle
- 11 Running into kicker
- 12 Crawling by the runner

- 23 Defensive player striking opponent above shoulders
- 24 Roughing the kicker
- 25 Piling up, hurdling, clipping
- 26 Tackling player out of bounds
- 27 Coaching from the sidelines
- 28 Illegal interference with defense by passing team

OTHER PENALTIES

- 31 Interference by defensive team on forward pass—first down for passing team at spot of foul

- 32 Flagrant roughing of kicker—disqualification, plus fifteen yards
- 33 Flagrant unsportsmanlike conduct—disqualification, plus fifteen yards.



"Looks like coach is a poor loser!"

In Boston



HOTEL KENMORE

COMMONWEALTH AVE. at KENMORE SQ

The center of Boston's Collegiate and Social Life.

All 400 Rooms With Bath—Rates from \$3.50

Popular Lounge Bar.

Ample Parking Space.

Send for Colorful Historical Map of Boston.

L. E. WITNEY, *Managing Director*

Over 200 athletic teams have made the Kenmore their headquarters during the past several years.

The official watch
for timing all
PROVIDENCE
FOOTBALL GAMES IS

Longines

THE WORLD'S MOST HONORED WATCH

Longines Watches, selected as official watch by the 1940 Olympic Committee, is also official watch for timing the football games for more than 100 leading colleges; timed 20 of the leading track meets of 1940 and the major intercollegiate basketball games. Longines is also official watch for the National Professional Football League and was worn by all umpires officiating at American and National League baseball games of 1940 including the World Series. Among the 104 national and international sports and contest bodies for which Longines is official watch are National Aeronautic Association, American Automobile Association, National Power Boat Association, International Federation du Ski, American Lawn Tennis Association, and U. S. Polo Association.

The world-leadership of Longines Watches is further attested by 10 world's fair grand prizes, 28 gold medals and more honors for accuracy than any other timepiece. Truly Longines is . . . the world's most honored watch.

**Watches of accuracy
and elegance by Longines**



The skill, experience and workmanship necessary for the construction of Longines Watches for precision timing, aviation, and navigation is reflected in the greater accuracy of every Longines Watch at any price. Longines-Wittnauer jewelers show Longines personal watches of distinction priced \$40 upward; Wittnauer watches from \$24.75.

LONGINES-WITTNAUER WATCH CO., Inc.
580 FIFTH AVENUE, NEW YORK, N. Y.

TIME

The silent contestant in football . . .

Time, in football, is of the very essence. So important is it, in fact, that one of the four officials, namely the *field judge*, has complete jurisdiction over the timing of the game. His timepiece must be flawlessly precise. The outcome of the game may hinge on its delicate mechanism.

How often have you seen a quarterback driving his team towards a touchdown, with the precious seconds ebbing away? The battle in such cases is not against the opposing team only, but against time. The faithful watch alone determines the team's destiny.

The duration of any time-out is two minutes, and it is a rule in football that if a team refuses to play within two minutes after having been ordered to do so by the Referee, it *forfeits* the game. And no delay, of any kind, for any cause whatsoever, shall continue for more than two minutes. Yes, truly time is of the essence.

When a team is in the huddle, it has a limit of twenty-five seconds to put the ball in play—not twenty-six or twenty-seven, but twenty-five. And the watch that ticks off those valuable seconds must be dependable, respected—honored. That is why football officials use Longines.

The field judge's watch is a busy one, for time-out must be taken while the ball is being brought out for a kick-off; during a try-for-point after a touchdown; after a touchdown, safety or touch-back; after a fair catch has been made; after an incomplete forward pass; when the ball goes out of bounds; during all substitutions (with certain exceptions); or when play is for any reason suspended by the referee.

The length of a football game is 60 minutes—four fifteen minute periods. There is an interval of one minute between the first and second periods and the third and fourth. Between the second and third periods there is an intermission of fifteen minutes. If either team is late in getting on the field after the fifteen minute interval, it is penalized 15 yards. If a team delays the game during the play, it is penalized 5 yards.

Obviously there can be no halfway measure or lax timing in football. The timekeeper's word is law. That is why, in order to be doubly sure, football officials always use Longines, the World's Most Honored Watch.

FRIARS CLUB
of
PROVIDENCE
COLLEGE

*"Welcome the coming
Speed the Parting Guest"*

Waldorf
NEW DRESS SUITS
NEW TUXEDOS

*For
Sale*



*To
Hire*

Top Hats, "Tails", White Ties
New Waldorf Tuxedos
10 Weeks to Pay **\$22.50**

WALDORF CLOTHING CO.

Men's Formal Wear—EXCLUSIVELY

212 UNION ST. Corner Weybosset

*After
The
Game*

ZOMBIE * ZOMBIE

THE NITE LIFE SENSATION
THAT'S SWEEPING THE NATION

NEW YORK MIAMI
WORLD'S FAIR BOSTON

AND NOW - PROVIDENCE
(CROWN HOTEL)
Bringing Exotic Tropical Delicacies
by RUBY FOO
plus the Exhilarating Drinks and the
Romantic Atmosphere of
the South Sea Islands

2 BANDS ★ 3 SHOWS

MONTE PROSER'S
BEACHCOMBER

Home of THE ZOMBIE . . . World's Most Potent Potica
Under Personal Direction of TOMMY MAREN
FOR BEACHCOMBER RESERVATIONS— Gaspee 6769
Open Daily and Sunday from 6 P. M. — Never a Cover Charge

*After
The
Game*